



Semen & Herd Sire

Elite genetics accessible and affordable to everyone!

Directory
2025



Hoover Dam



Deep Creek Legitimate 203



Hoover No Doubt

Countdown To 100...97 Years of Angus Genetics
by the Hoover Family



E L K Trophyclass



Back row: **Landi and Andrew**
Front row: **Gwen, Joy, David and Ty**



Mohnen General Lee



Hoover About It



Mogck Empire 110

The Hoover Family homesteaded in Southern Iowa in 1856; the purebred Angus herd was founded in 1928 by Walt Hoover. Hoover Angus has passed through the female side of the Hoover family since that time, with second generation John & Barb (Hoover) Kiburz, third generation David & Joy (Kiburz) McFarland, and fourth generation Andrew & Landi (McFarland) Livingston. Now in our 169th year of family farming and 97th consecutive year of Angus cattle, we strive to create genetics with an optimum balance of phenotype, maternal, performance, and EPD strength through the art and science of a disciplined breeding program.

Andrew & Landi Livingston
Ellston, IA • landi@hooverangus.com
Landi's cell 641-344-7684

David & Joy McFarland
Tingley, IA
Joy's cell 641-344-3234

www.hooverangus.com
www.facebook.com/HooverAngusFarm

A supplement to the February 4, 2025 Hoover Angus sale book and the January 2024 Angus Journal. EPDs current as of 12-6-24.

DEEP CREEK LEGITIMATE 203



Calved 1-5-22 203

20509691

[AMF, CAF, D2F, DDF,
M1F, NHF, OHF, OSF, RDF]

CED	BW	WW	YW	SC	DOC	HP	CEM	MILK	MB	RE	CLAW	ANGLE
+8	+1.0	+92	+149	+28	+14	+14.8	+6	+30	+86	+94	+42	+41
		3%	10%			25%		25%	30%	20%	25%	20%

\$M	\$F	\$B	\$C
+74 25%	+109 25%	+176 20%	+302 15%

Woodhill Blueprint #
Myers Fair-N-Square M39
Myers Miss Beauty M136

Basin Rainmaker 4404 #
Deep Creek Rain Lass 013
Deep Creek MP Lass 933 #

Connealy Confidence Plus #
Woodhill Evergreen Z291-B233
Connealy Thunder #
Myers Miss Beauty M476 #
Basin Rainmaker 2704
Basin Joy 1036
Ma & Pa Feature Presentation
Deep Creek 193 Lass 516 #

SEMEN \$40 CERTIFICATES \$50

- ★ Legitimate. That's his name, that's what he is, and that's the program he comes from!
- ★ Legitimate's first calves have now been weaned, and they are flat out getting the job done! They are thick, stout, correct-structured, and just-right framed. We will have a large sire group of sons as well as heifers bred to him in our February 4, 2025 sale. The #1 and #2 top weaning weight heifers of the 2024 Hoover crop as well as 2 of the top 5 weaning weight bulls of the crop (non-ET) were sired by Legitimate!
- ★ Legitimate's first calf crop of over 100 progeny in 7 herds average a 100 birth weight ratio. At press time, 75 weaning progeny average an impressive 104 wean ratio!
- ★ I do my homework before going to look at potential herd sire prospects. Everything TJ told me about the bull I found to be accurate when I laid my eyes on the bull and his mother. Legitimate's dam is a beautiful five year-old that is easy keeping, broody, nice uddered, and has a bright future ahead of her! She has settled first service AI 3 out of 4 years and records a phenomenal 3-116 WR.
- ★ Legitimate's Pathfinder grandmother settled first service AI 9 out of 10 years, and Legitimate's great grandmother also settled first service AI 9 out of 10 years! The documented fertility, longevity, and productivity in this cow family has been exceptional! Although fertility and longevity are traits hard to measure by EPDs, they are foundational to the success of America's cattlemen!
- ★ Legitimate's grandam is the dam of the \$20,000 Doc Holiday and his great grandam is the mother of a top Deep Creek donor who records a phenomenal 10-117 WR!
- ★ TJ Gabriel of Deep Creek Angus Ranch states, "From the time Legitimate hit the ground, we knew he had the potential to be great. Extreme length, depth of flank, extra chest floor, and he stands on a great foot. He rose to the top and earned 'Lot 1' status in the 2023 Deep Creek sale, where he garnered \$105,000 with progressive cattlemen winning the bid as well as being the contending bidders."
- ★ In a contemporary group of over 100 bulls, Legitimate weaned at 931 pounds and went on to post a 1493 pound yearling weight, ratio 123. He had a nice ultrasound scan of a 4.36 IMF, ratio



Hoover Legitimate C49
Legitimate Son
Sells February 4, 2025



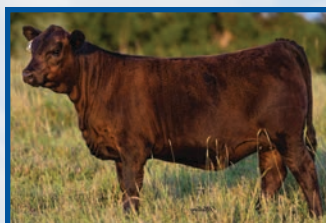
Hoover Legitimate C139
Legitimate Son
Sells February 4, 2025



Erica of Ellston C54
Legitimate Daughter
Sells February 4, 2025



Hoover Legitimate C26
Legitimate Son
Sells February 4, 2025



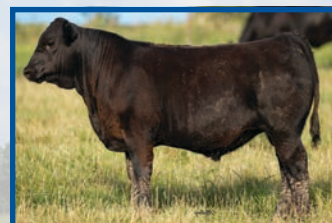
Blackcap Empress Ellston C60
5 month-old Legitimate
Daughter



Hoover Legitimate C9
6 month-old Legitimate Son
Sells February 4, 2025



Miss Blackcap Ellston C110
5 month-old Legitimate
Daughter



Hoover Legitimate C149
5 month-old Legitimate Son
Sells February 4, 2025

118, ribeye 14.4", ratio 116. His scrotal was an optimum 38 cm.

- ★ Legitimate froze semen on his first collection at Western Sires. He had heavy use rotating between the Moon Creek and Hoover Angus spring breeding programs, followed by Moon Creek's summer breeding program. We are very pleased with Legitimate's first crop and he will once again be used heavily in 2025 at Hoover Angus.
- ★ Legitimate has now been leased to Genex for semen distribution. Until Genex has semen in their inventory, semen is available through Hoover Angus!
- ★ Owned with Moon Creek Farms, Rock Rapids, IA; Hansine Ranch Partnership, Pierre, SD; and Deep Creek Angus Ranch, Midland, SD.



Deep Creek Rain Lass 013
Dam of Legitimate

MOHNEN GENERAL LEE



Calved 12-30-20 1301 20021321 [AMF, CAF, D2F, DDF, M1F, NHF, OHF, OSF, RDF]

CED	BW	WW	YW	SC	DOC	HP	CEM	MILK	MB	RE	CLAW	ANGLE
+4	+1.6	+81	+137	+1.74	+28	+9.3	+5	+31	+39	+43	+57	+37
		15%	20%	10%	15%			20%				10%

\$M
+66
\$F
+92
\$B
+130
\$C
+235

Baldrige Colonel C251 #
Mohnen General 548
 S AV Madame Pride 5290

 S AV Sensation 5615 #
Mohnen Jilt 1848
 Mohnen Jilt 2504 #

baldrige Xpand x743
 Baldrige Isabel Y69
 S AV 8180 Traveler 004 #
 S AV Madame Pride 0075
 S AV Registry 2831 #
 S AV Blackcap May 4136
 Mohnen Long Haul 502 #
 Mohnen Jilt 382

SEMEN \$25 CERTIFICATES \$40

- ★ General Lee has been used heavily in the 2023-2024 breeding programs at Hoover Angus, and his first set of sons were very well-accepted at auction, with 15 sons averaging \$8633! Our customers appreciated the growth and phenotype of these cattle. With moderate birth weights, General Lee progeny have superior weaning growth, but won't get too big as mature adults. Another large selection of sons and daughters will sell in our February 4, 2025 production sale.
- ★ General Lee's oldest daughters will calve for the first time in the spring of 2025, and we are anxious to get them in production, as we expect them to be well-mannered, beautiful uddered females. These females that had excellent fertility are soggy, broody females. General Lee ties as the highest Functional Longevity (FL) EPD Hoover-owned sire at +1.22!
- ★ The #1 adjusted weaning weight bull calf of our spring 2023 crop was by General Lee! General Lee had a dominant presence in the heaviest calves of our 2024 crop also.
- ★ The General Lee sire group represents what is often lost as our breed chases extreme EPDs – problem-free cattle that are easy to look at and have a breed character Angus head.
- ★ General Lee was a classy, super easy-going bull that met with our approval after seeing him and his mother in person. His feet were some of the best we evaluated in the spring of 2022! He's long, thick and sound with the rib capacity to make beautiful, productive daughters. General Lee is a big testicle bull that froze semen quickly at CGS as a yearling bull. He weaned at 801 pounds, WR 110, YW 1438 lbs., YR 106, and he scanned over 1.1" of ribeye per hundred pounds of body weight!
- ★ General Lee lives up to his Docility EPD near the top of the breed, and we use him to continue the tradition of disposition excellence at Hoover Angus! Also important to Hoover Angus customers, he has a tight sheath and slick hair coat for working on tough fescue pastures.
- ★ General Lee's dam, which comes from the most famous cow line in Mohnen history, has a very small teat size, tight udder attachment, and is a massive-bodied, ideal Angus female.



Miss Erica Ellston B113
 General Lee Daughter
 Sells February 4, 2025



Lady Ida of Ellston B149
 General Lee Daughter
 Sells February 4, 2025



Hoover General Lee C53
 General Lee Son
 Sells February 4, 2025



Blackcap Empress Ellston C73
 General Lee Daughter
 Sells February 4, 2025



Hoover Militia
 \$27,500 General Lee Son



Blackcap Empress Ellston B1
 8 month-old General Lee Daughter



Hoover General Lee B5
 \$12,500 General Lee Son



Hoover General Lee B28
 \$8,250 General Lee Son



Blackcap Empress Ellston B15
 \$8,000 General Lee Daughter



Mohnen Jilt 1848
 Dam of Mohnen General Lee

- ★ As always, Hoover Angus is proud to show you our cattle – stop by Hoover Angus to see General Lee in person!
- ★ Owned with Mohnen Angus, White Lake, SD.

E L K TROPHYCLASS



Calved 3-8-21 I46

20191986

[AMF, CAF, D2F, DDF, M1F, NHF, OHF, OSF, RDF]

CED	BW	WW	YW	SC	DOC	HP	CEM	MILK	MB	RE	CLAW	ANGLE
+8	+2.2	+79	+131	+1.65	+18	+5.9	+8	+31	+7.5	+9.0	+5.2	+5.8
		20%	30%	10%				20%		20%		

\$M
+51
\$F
+126 10%
\$B
+183 15%
\$C
+288 25%

LD Capitalist 316 #
Musgrave 316 Stunner #
MCATL Blackbird 831-1378 #

Connealy Onward #
Pine Coulee Black Annie U7
War Hill Blackbone Annie

Connealy Capitalist 028 #
LD Dixie Erica 2053
MCATL Pure Product 903-55 #
MCATL Blackbird 1378-573
Connealy Lead On #
Altune of Conanga 6104
G A R Expectation 4915 #
V T 6807 Traveler S32

SEMEN \$25 CERTIFICATES \$40

- ★ Trophyclass was brought to Hoover Angus as the phenotypic standout of Tyler & Meg Scales' 2021 bull crop. His phenomenal producing dam was still going strong at 16 years of age. We expect Trophyclass daughters to leave a legacy for not only phenotype, but fertility, longevity, structure, foot quality and optimum growth and carcass qualities. His first daughters will be in production in 2025, and we can't wait – they are good temperament, broody, feminine fronted, beautiful females!
- ★ We weaned our first Trophyclass calves in 2023 and what standouts they were! Trophyclass stamps his calves with unprecedented rib shape! Nice Trophyclass sons and daughters will sell in our February 4, 2025 sale. Tyler Scales reports that his Trophyclass calves are his most consistent sire group.
- ★ Trophyclass is a proud bull that offers excellent structure, a wide stance and chest floor, bold muscle, big testicles, and superior foot shape. When I first saw the bull as a yearling, I knew he was the next "great one" for the Hoover program. My decision was solidified when I discovered his dam was in her teens and still going strong!
- ★ Trophyclass' EPDs aren't earth shattering, but more important, they are REALISTIC, BELIEVABLE, and ACHIEVABLE. As our breed constantly chases wild EPDs and outlier marbling genetics, we wanted a bull that hits an "optimal" target for carcass genetics while prioritizing maternal strength and longevity. Trophyclass does that! Better yet, he set the weaning weight record at E L K Angus in a dry year! Trophyclass thrived on the tough sagebrush country at the base of the Bighorn Mountains in Tyler's herd that is built around commercial cattlemen's satisfaction.
- ★ Trophyclass traces back to Walt Hoover's foundational herd sire, the 1936-born Revolution's Bell Boy!
- ★ Jim Stampfel of Pine Coulee Angus, breeder of Trophyclass' dam, has this to say about her, "The 16 year-old Black Annie U7 cow is definitely in the discussion as the best cow to be raised at Pine Coulee. She passes on a ton of muscle and style with very good feet, udder, and excellent fertility. She can travel, she can forage, and her production record is excellent. Lastly, her disposition can't be beat, calm and mature." U7's natural calves average a moderate 96 birth ratio, yet whopping 110 weaning ratio and 108



Hoover Trophyclass C37
Trophyclass Son
Sells February 4, 2025



Hoover Trophyclass C38
Trophyclass Son
Sells February 4, 2025



Erica of Ellston C177
Trophyclass Daughter
Sells February 4, 2025



Blkcp Empress Ellston B190
Trophyclass Daughter
Sells February 4, 2025



Maid of Ellston B172
Trophyclass Daughter
Sells February 4, 2025



Erica of Ellston B70
7 month-old Trophyclass Daughter



Hoover Trophyclass B59
Trophyclass Son
\$16,500 Trophyclass Son



Hoover Trophyclass B39
\$13,000 Trophyclass Son



Prim Lassie of Ellston B52
6 month-old Trophyclass Daughter



Pine Coulee Black Annie U7
Dam of Trophyclass
Pictured at 8 years of age

yearling ratio. She sold in the 2018 Ladies of the Beartooth Sale for \$31,000, and has produced over \$150,000 in progeny sales including the Lot 1 bull in the 2018 Pine Coulee Bull Sale.

- ★ Trophyclass froze semen on his second collection at just 13 months of age, and was flushed to one of the most high-profile cows in the Hoover herd. Then in the fall of 2022, after being away from cows or collections for 3 months, he froze just shy of 500 units in his first walk-in collection!

- ★ Owned with E L K Angus, Buffalo, WY.

MOGCK EMPIRE 110



Calved 12-20-19 110

19889822

[AMF, CAF, D2F, DDF, M1F, NHF, OHF, OSF, RDF]

CED	BW	WW	YW	SC	DOC	HP	CEM	MILK	MB	RE	CLAW	ANGLE
+17	-3.3	+79	+131	+70	+23	+14.3	+15	+26	+1.09	+1.01	+47	+57
1%	1%	20%	30%		30%	25%	3%		15%	15%		

\$M
+87 10%
\$F
+117 15%
\$B
+196 10%
\$C
+341 4%

K C F Bennett Fortress #
MOGCK Fortress 517
Mogck Rosebud 1545

SydGen Enhance #
MOGCK Eraline 1748
Mogck Eraline 855 #

Connealy Consensus #
Thomas Patricia 9705
Styles Cash R55
Mogck Rosebud 93
SydGen Exceed 3223 #
SydGen Rita 2618
MOGCK Density 1233
Mogck Eraline 2142

SEMEN \$25 CERTIFICATES \$40

- ★ Empire is our "go to" heifer bull! He is an ultra calving ease bull that boasts CED and CEM EPDs in the top percentiles of the breed! Better yet, these cattle that have explosive weaning growth. In our 2023 spring crop, Empire sired the #1 weaning weight heifer and the #2 weaning weight bull! In our fall 2023 crop, Empire had the #1 weaning weight bull of the entire crop at 875 pounds (an ET calf) and among the non-ET calves, he sired the heaviest two bulls!
- ★ One of the best things about Empire's progeny is their growth curve that gives our customers accelerated early growth with a respectable mature size, so Empire's daughters won't be too big and harsh on feed resources! An ideal scenario for commercial cattlemen selling their calves by the pound at weaning and retaining replacement daughters!
- ★ Our February 4, 2025 sale has numerous photo feature sons and daughters of Empire, as well as bred heifers carrying his service.
- ★ **Volume semen discounts are available for commercial heifer projects!**
- ★ For those interested in the new Functional Longevity EPD (FL), Empire is among the top 22 sires of the breed (with at least one daughter in the evaluation) with a +1.22 FL EPD!
- ★ Empire isn't your typical "calving ease" bull lacking muscle – he scanned a 15.1" ribeye to have 1.17" of ribeye per hundred pounds of body weight! His carcass EPDs are favorable for producers feeding out their calves and selling on a grade and yield grid.
- ★ Empire daughters in production have picture-perfect udders, and look like their udders will be very long-lasting as nice of udder suspension and teat size as what they have. These young cows were easy fleshing and had great breed-back rates as wet two year-olds. Visit his herd sire page on our website to see several of his young daughter's udders.
- ★ As a yearling bull, Empire froze semen at CGS, then serviced heifers at Mogck & Sons, then came to Hoover Angus for natural service duties. The same plan for 2022-2024 unfolded, with hundreds of units of semen being sold throughout the Midwest, including to repeat customers who used Empire his first year.
- ★ Empire's dam is an 11th generation Eraline female to be bred, born and raised by Mogck & Sons. Empire had a light birth weight of 62



Hoover Empire B433
Empire Son
Sells February 4, 2025



Hoover Empire B440
Empire Son
Sells February 4, 2025



Hoover Empire B487
Empire Son
Sells February 4, 2025



Erica of Ellston B282
Empire Daughter
Sells February 4, 2025



Elbamere Queen Ellston B431
Empire Daughter
Sells February 4, 2025



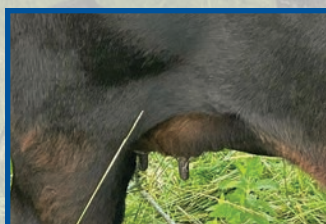
Blkcp Empress Ellston B419
Empire Daughter
Sells February 4, 2025



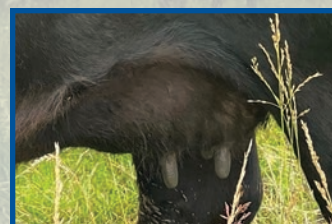
Erica of Ellston B437
Empire Daughter
Sells February 4, 2025



Queen of Ellston A88
9 month-old Empire Daughter



Udder of
Prim Lassie of Ellston A184
Two year-old Empire Daughter



Udder of
Blkcp Empress Ellston A304
Two year-old Empire Daughter

pounds followed by an 816 pound weaning weight, WR 116, YW 1462 lbs., YR 110.

- ★ We welcome visitors to see this bull, as we are proud of his structure, feet, substance, and disposition! Come see him on a pasture tour this summer! Hundreds of units of semen have been sold for heifer projects; commercial pricing is available.
- ★ Owned with Mogck & Sons, Olivet, SD.

SITZ GALACTIC 723G



Calved
1-28-19

723G

19393010

[AMF, CAF, D2F,
DDF, M1F, NHF,
OHF, OSF, RDF]

\$M	
+51	
\$F	
+110	25%
\$B	
+162	
\$C	
+261	

Mohnen Substantial 272 #
Sitz Stellar 726D #
Sitz Pride 200B

Sitz Emblem 11125
Sitz Barbaramere Jet 328E
Sitz Barbaramere Jet 771Z

Benfield Substance 8506 #
Mohnen Glyn Mawr Elba 1758
Connealy Final Product #
Sitz Pride 308Y #
S AV Pioneer 7301 #
SITZ Shauna 3152 #
Sitz New Design 458N #
Sitz Barbaramere Jet 135R #

SEMEN \$30 CERTIFICATES \$40

CED	BW	WW	YW	SC	DOC	HP	CEM	MILK	MB	RE	CLAW	ANGLE
+7	+3	+78	+138	+93	+15	+12.9	+11	+20	+66	+49	+14	+38
	30%	20%	20%				25%				1%	10%

- ★ "He's the one!" says Joy after seeing this calm temperament, 5 year-old bull in person. Landi relates, "He's just what we need to maintain and even increase frame size while keeping other traits in check. We are thrilled about the foot quality this bull exhibits at his age, as well as an exceptional ability to slick off early in the season

- as seen in person and with his Hair Shed EPD. Galactic will be just the ticket for our commercial customers looking to sell calves by the pound and retain replacement females. We couldn't be more pleased!" Hoover Angus purchased an interest in Galactic in the spring of 2024.

- ★ Galactic combines an appropriate level of calving ease and growth along with a reasonable amount of milk to be able to produce tight-uddered, long-lasting females that can excel in fescue country.
- ★ Galactic will be one of the two largest sire groups coming in the spring of 2025 at Hoover Angus, and heifers will sell bred to him in our February 4, 2025 production sale.
- ★ Owned with High Point Genetics, Osceola, IA; Vollmer Angus, Wing, ND; and Sitz Angus, Harrison, MT.

HOOVER ABOUT IT



Calved
1-12-22

A26

20427019

[AMF, CAF, D2F,
DDF, M1F, NHF,
OHF, OSF, RDF]



Erica of Ellston T78

About It's Dam
Hoover Angus Donor



Erica of Ellston N54

About It's Pathfinder Grandam
Hoover Angus Donor

CED	BW	WW	YW	SC	DOC	HP	CEM	MILK	MB	RE	CLAW	ANGLE
+11	-1.6	+64	+120	+1.21	+23	+17.6	+11	+35	+86	+82	+37	+35
20%	10%			30%	30%	10%	25%	10%	30%	30%	10%	4%

\$M	
+93	3%
\$F	
+106	30%
\$B	
+168	25%
\$C	
+311	10%

Mogck Bullseye #
Hoover No Doubt
Miss Blackcap Ellston J2

Baldrige 38 Special #
Erica of Ellston T78
Erica of Ellston N54 #

MOGCK Sure Shot #
Mogck Mary 1255
SydGen C C & 7 #
Miss Blackcap Ellston D154 #
EF Commando 1366 #
Baldrige Isabel Y69
Basin Excitement #
Erica of Ellston G366 #

SEMEN \$25 CERTIFICATES \$40

- ★ There is (No Doubt) About It this bull is truly unique! Finally, an ultra calving-ease Hoover No Doubt son from the best cow family at Hoover Angus! He is an easy choice to use on heifers and not sacrifice thickness and power at weaning time! Save every daughter he makes for your replacement herd! He offers superior foot quality.
- ★ Hoover Angus is pleased to offer semen discounts to our customers in appreciation for being our customer – please contact Landi for details on pricing for this "heifer project" bull!
- ★ Hoover About It is an attractive, smooth made bull that is really long, big hiped, thick, and has the muscle you would expect from No Doubt. He offers a super calm disposition and the genetic ability to produce a set of calm temperament calves.
- ★ His dam is a beautiful uddered, young cow with a 349 day calving interval on her first four calves prior to stealing a flush in 2023. His grandam and great grandam are both Pathfinder Hoover donors.

Grandam N54 is a very low birth weight cow whose calves get right up and grow to surpass their heavier birth weight contemporaries at weaning time. N54 has a perfect 365 day calving interval, despite stealing flushes several years – very indicative of the fertility in this cow family!

- ★ Great grandam G366 is regarded as the best cow in our 97-year history, and her 23 descendants averaged \$10,076 in our 2023 sale! Four of her direct daughters have earned the elite Pathfinder designation, and at least 15 of her daughter descendants have served as donors. Although not talked about much in the EPD era we are in, this Erica cow family has exceptional mothering ability – imperative for commercial cattlemen making a living from cattle!
- ★ Hoover About It has been leased to Jack Laurie of Breeder Genetics in Australia to be part of his strong line-up of sires. After viewing the bull in person, Jack stated, "About It stood out to us for his unique ability to be utilized on heifers, without a sacrifice on muscle shape, constitution and structure. A bull we believe offers pedigree diversity, maternal excellence, and backed by a program with a strong commitment to phenotype recording to our clients in Australia and New Zealand."
- ★ Owned with Larry & Bill Hohertz, Greenfield, IA.



Hoover Trophyclass C37

Maternal Brother to About It
Sells February 4, 2025

MEAD MERCURY



Calved
12-13-22

Z0276

20741361

[AMF, CAF, D2F,
DDF, M1F, NHF,
OHF, OSF, RDF]

CED	BW	WW	YW	SC	DOC	HP	CEM	MILK	MB	RE	CLAW	ANGLE
+5	+9	+86	+150	+1.04	+19	+11.9	+12	+31	+1.03	+1.13	+35	+41
		10%	10%				15%	20%	25%	10%	10%	20%

- ★ Mead Mercury was the \$85,000 top-selling bull of the March 2, 2024 Mead Farms Bull Sale. Purchased with several other progressive breeders, Mercury combines breed-leading muscle, outstanding thickness, a great look, solid feet, and still does an excellent job of covering the bases on paper.
- ★ Mercury will be one of the more moderate frame sized bulls in the Hoover herd bull line-up, however, we expect him to have the unique ability to sire heavy weaning weights (excellent for our customers who sell their calves by the pound at weaning), yet modest mature weights, whereby keeping cow size in check and not getting too extreme and harsh on feed resources. This is shown by Mercury's WW and YW EPDs in the top 10% of the breed, yet his Mature Weight EPD in the bottom 80% of the breed, which indicates smaller mature size. Truly an optimal genetic combination for Hoover Angus customers!
- ★ Mercury's muscle is evident not only by viewing the bull, but his

\$M	\$F	\$B	\$C
+96 2%	+115 15%	+190 15%	+342 5%

Basin Deposit 6249
Basin Safe Deposit 9324
Basin Joy 2006

Connealy Convooy
Mead Beauty V971
Mead Beauty R523

Basin Advance 3134 #
Basin Lucy 4288
Summitcrest Complete 1P55 #
Basin Joy 566T
Connealy Concord #
Ebbie of Conanga 5473
Basin Payweight 1682 #
Mead Beauty P382

SEMEN \$35 CERTIFICATES \$40

17.7" ribeye gives him an off-the-charts 1.44" of ribeye per hundred pounds of body weight! Hoover Angus customers like muscle, and this bull certainly offers it! Mercury also offers higher Marbling potential for our customers feeding out their calves and selling them on a grid.

- ★ Sire Basin Safe Deposit was the 2020 Montana Performance Bull Co-op top seller that offers a unique combination of foot quality, carcass merit, and curve bending spread with outstanding phenotype. Cattlemen who understand structure and how it relates to foot quality have described Safe Deposit as a legitimate foot improver.
- ★ Mercury grew up in the tough fescue country of central Missouri at Mead Angus where mothers have to make a living or they get hauled to town. No excuses, no special treatment, just good cow sense and good genetics!
- ★ Mercury was used natural service at Hoover Angus in 2024 on a large group of heifers – both spring and fall bred heifers will sell bred to him in our February 4, 2025 sale!
- ★ Owned with Gary Wall, IA; Mead Farms, MO; High Point Genetics, IA; Bull Barn Genetics, NE; Brice Conner, IA; Bonnie Acres Farm, IA; Cedar Top Ranch, NE; Diamond Peak Cattle Co., CO; Windmill Angus Ranch, NE; Spokane Hutterian Brethren, WA; Nold Family Angus, SD; and Les Craft Angus, MT.

YON STRONG



Calved
9-3-23

M38

20770428

[AMF, CAF, D2F,
DDF, M1F, NHF,
OHF, OSF, RDF]

CED	BW	WW	YW	SC	DOC	HP	CEM	MILK	MB	RE	CLAW	ANGLE
+10	+1.8	+92	+146	+2.05	+30	+18.3	+13	+32	+1.07	+55	+33	+33
25%		3%	15%	3%	10%	5%	10%	15%	20%		5%	3%

\$M	\$F	\$B	\$C
+110 1%	+99	+171 30%	+332 10%

S Architect 9501
S Armstrong
S Queen Essa 7149 #

V A R Discovery 2240 #
Yon Sarah D668
Yon Sarah A615

SydGen Blueprint
S Blossom 7514
S Foundation 514 #
S Queen Essa 960
A A R Ten X 7008 S A #
Deer Valley Rita 0308
Yon Future Focus T219 #
Yon Sarah N170

SEMEN \$25 CERTIFICATES \$40

as the Yon family was impacted prior to their 2024 sale.

- ★ Dam Yon Sarah D668 has made her mark as one of the most impressive females in Yon history. Her sons include Yon Saluda and Yon Top Cut G730 (both at Select Sires) as well as others in numerous progressive programs across the country.
- ★ This gentle bull had an adjusted weaning weight of 690 pounds with no creep, ratio 109, and a strong yearling weight ratio of 107. He scanned a 3.81 IMF, ratio 106 and a 12.3" ribeye, ratio 105.
- ★ When Yon Strong arrived, we noticed his super calm demeanor. We had a cow in heat, so within the hour of him arriving from South Carolina, Yon Strong got to breed his first female. This calm bull went right to work and learned out how to breed his first cow within 15 minutes. He continues to be a high libido bull.
- ★ Fall bred heifers in our February 4, 2025 sale will sell bred to Yon Strong. He froze semen on his second collection at 14 months of age.
- ★ Owned with Yon Family Farms, Ridge Spring, SC.



Yon Sarah D668
Donor Dam of Strong

For more photos and detailed information
on Hoover herd sires, visit
www.hooverangus.com/herdsires.html

RAML ATHLETE



Calved
12-29-19

0513

19926411

[AMF, CAF, D2F,
DDF, M1F, NHF,
OHF, OSF, RDF]

CED	BW	WW	YW	SC	DOC	HP	CEM	MILK	MB	RE	CLAW	ANGLE
+5	+1.2	+74	+132	+78	+26	+17.5	+10	+30	+29	+89	+42	+58
		30%	25%		20%	10%		25%		20%	25%	

\$M
+49
\$F
+107 30%
\$B
+144
\$C
+236

S A V Renown 3439 #
RAML Rugby 7103
RAML Ruby 103

TC Aberdeen 759 #
RAML Royce 536
RAML Royce 335

Rito 707 of Ideal 3407 7075
S A V Blackcap May 4136
S A V Providence 6922 #
Chestnut Ruby Burgess 644
C R A Bextor 872 5205 608 #
TC Blackbird 4034 #
Connealy Thunder #
RAML Royce 102

★ Athlete progeny have a little added frame, plenty of body, and excellent foot structure. His first daughters in production are beautiful uddered females – well-attached udders with a small teat size.

★ For those that follow Dr. Jan Bonsma's teachings, you will find that Athlete exemplifies many of the phenotypic characteristics found in Bonsma's description of cattle in endocrine balance that are highly fertile and productive. Not surprisingly, Athlete offers a high Functional Longevity (FL) EPD of +1.06.

★ Raml Athlete was THE BEST footed bull we traveled to see in the spring of 2021! His toe shape is ideal and his heel depth exceptional. We purchased him to continue our quest to improve foot quality, structure, longevity and disposition excellence! Grant Raml was not joking when he said this bull is laid back – he and his progeny have good temperaments!

★ Athlete weaned at 881 pounds, WR 121, YW 1415 lbs., YR 112, and had an adjusted 39.36 cm scrotal. His dam posts a whopping 3-118 WR and 3-110 YR with well below average birth weight ratios on her natural progeny! She has become a donor for the Ramls.

★ Athlete is a soft sided, soggy-made, wide topped bull. He has a small head to aid in calving ease, yet has gas in the tank to sire high performing calves! His calves exhibit excellent depth of body and rib shape.

★ Athlete gets turned out at Hoover Angus each year in one of our bigger pastures. We welcome you to Hoover Angus to view Athlete and any other herd sires we have on the farm. Our doors are always open for our customers to evaluate the cattle in person before making purchasing decisions of genetics.

★ Owned with Raml Cattle, Goodwin, SD.



Blueblood Lady Ellston A68
\$6250 Athlete Daughter

RAML OPTICS 0710



Calved
12-19-19

0710

19832718

[AMF, CAF, D2F,
DDF, M1F, NHF,
OHF, OSF, RDF]

CED	BW	WW	YW	SC	DOC	HP	CEM	MILK	MB	RE	CLAW	ANGLE
+13	+9	+73	+135	+1.36	+18	+13.7	+14	+18	+42	+1.04	+57	+40
10%		30%	25%	20%		30%	10%			10%		15%

\$M
+31
\$F
+113 20%
\$B
+162
\$C
+241

GDAR Leupold 298 #
RAML Rangefinder 7536
RAML Royce 536

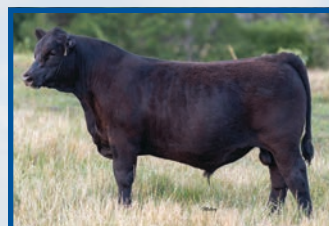
Barstow Cash #
RAML Ruby 710
RAML Ruby 319 #

A A R Leupold 0578 #
GDAR Miss Blackcap 9232
TC Aberdeen 759 #
RAML Royce 335
Sitz Dash 10277 #
Barstow Queen W16
TC Aberdeen 759 #
RAML Ruby 103

SEMEN \$30 CERTIFICATES \$40

★ Optics was one of our largest sire groups in 2022 and 2023, and they have not disappointed yet! These calves were fun to wean, as they showed excellent growth and the added frame and length of body our customers like. They represent a completely new pedigree for our repeat customers. If the Angus breed has gotten too small for your liking, check out the Optics progeny! Sons and daughters will sell in our February 4, 2025 production sale.

★ Optics sired the #1 adjusted weaning weight bull calf of our 2022 crop at 915 pounds and went on to repeat that honor in our 2024 crop! In our 2023 crop, Optics calves performed well – they dominated the top end of our ET bull calf weaning weights, and 2nd



Hoover Optics B2
\$15,000 Optics Son



Erica of Ellston B17
8 month-old Optics Daughter

top weaning weight heifer of the entire crop was by Optics.

★ Optics has a good projection for longevity, with a +1.09 Functional Longevity EPD (FL). Optics' young daughters are very tight uddered with a very small teat size, which is certainly a good indication that his daughter's udders will last well into old age.

★ In our quest to find the most "optimal" bull to be sold in the spring of 2021, Optics met the mark! Although he is not *extreme* in any one area, we feel he is *optimal* in nearly every area! His EPD package instantly drew our attention, his video further sparked our interest, and by the time we evaluated the bull in person as well as FOUR of the females in his pedigree, we knew this was the bull to own!

★ Before we purchased Optics, we saw his dam, grandam, and great grandam, and were impressed with each generation. His grandam has earned Pathfinder honors, and his 2nd, 3rd, and 4th generation dams have all served as donors for Raml Cattle. His great grandam was still going strong at 12 years of age, and she produced the \$28,000 Raml Rugby 7103 owned by ABS. She is a beautiful uddered, excellent footed, smooth walking female.

★ Hoover Angus purchased Optics for \$29,000. Optics quickly froze over 500 units of semen as a yearling bull before turn-out.

★ Optics weaned at 812 pounds, WR 112, YW 1420 lbs., YR 113, and had a 41 cm scrotal. He is wide based, thick, smooth shouldered, and offers the frame and stretch that is hard to find in the breed today.

★ Owned with Cattle Visions, Clark, MO; Panther Creek Ranch, Bowen, IL; Raml Cattle, Goodwin, SD, and Unlimited Genetics, Bloomfield, IA.

BALDRIDGE CHAIRMAN



Calved
1-17-16

D073

18587751

[AMF, CAF, D2F,
DDF, M1F, NHF,
OHF, OSF, RDF]

CED	BW	WW	YW	SC	DOC	HP	CEM	MILK	MB	RE	CLAW	ANGLE
+9	-1.6	+70	+120	+67	+17	+13.1	+15	+29	+67	+78	+53	+49
30%	10%						3%	30%				

\$M
+66
\$F
+89
\$B
+143
\$C
+251

Connealy Confidence 0100 #
Fortunes Conquest 224
Fortunes 4412 Ethelda 742

G A R Prophet #
Baldrige Isabel B061
Baldrige Isabel Y69

Connealy Tobin
Becka Gala of Conanga 8281
S A V 004 Traveler 4412
Fortunes 112 Ethelda 423
C R A Bextor 872 5205 608 #
G A R Objective 1885
Styles Upgrade J59 #
Baldrige Isabel T935

SEMEN \$25 CERTIFICATES \$40

- ★ Chairman checks a lot of boxes and is one of the most balanced, complete bulls in the Hoover line-up. We love our Chairman daughters, as they are deep, broody, model Angus females with very nice udders! Chairman progeny are low birth weight cattle with growth, style, and a sound structure to make them very well-rounded cattle. Five Chairman sons averaged \$8300 in our 2021



Erica of Ellston X156
Chairman Daughter
Hoover Angus Donor



Hoover Chairman Z463
\$12,000 Chairman Son

- auction, and 18 sons averaged \$7903 in our 2022 sale!
- ★ The oldest Chairman daughters are now in the prime of their life, and they are my favorite sire group of our 3-6 year-old cows! Chairman daughters have an average 102 wean ratio on their progeny!
- ★ Chairman was the #1 yearling weight bull of the 2017 Baldridge sale at 1442 pounds, YR 115 after posting an 842 pound weaning weight, WR 113! This \$55,000 bull is a deep bodied, massive type bull. Chairman was definitely a favorite of Jud's in their sale, as he earned a painted picture in the Taft Building. He is a loose-skinned, stylish bull whose progeny are generally a tick more moderate frame than most Hoover cattle.
- ★ Chairman was the first natural calf of the outstanding B061 cow. We viewed B061 before purchasing Chairman, and found her to be an exceptional uddered young cow. The B061 cow has now become a high-impact donor for several programs. She is a full sister to Baldridge Beast Mode at Genex. Some of her promising sons include Baldridge Pappy and Baldridge Done Deal (both by No Doubt), Baldridge Movin On G780, and Baldridge Gibson G859. She is the highest grossing daughter of the great Y69 cow. Y69 has become one of the most influential cows of the entire Angus breed.
- ★ Owned with Alta Genetics, Rocky View County, AB and Baldridge Performance Angus, North Platte, NE.

HOOVER NO DOUBT



Calved
1-29-14

N68

17882682

[AMF, CAF, D2F,
DDF, M1F, NHF,
OHF, OSF, RDF]

CED	BW	WW	YW	SC	DOC	HP	CEM	MILK	MB	RE	CLAW	ANGLE
-3	+4.8	+76	+140	+1.81	+30	+7.7	+11	+11	+1.03	+1.04	+42	+37
		25%	15%	10%	10%		25%		15%	10%	25%	10%

\$M
+52
\$F
+134
\$B
+210
\$C
+324

MOGCK Sure Shot #
Mogck Bullseye #
Mogck Mary 1255

SydGen C C & 7 #
Miss Blackcap Ellston J2
Miss Blackcap Ellston D154 #

Mytty In Focus #
Mogck Black Lass 2065
K C F Bennett Coalition SCC #
Mogck Mary C 1757
S A F Connection #
SydGen Forever Lady 4087
TC Gridiron 258 #
Miss Blackcap Ellston A269

SEMEN \$50 CERTIFICATES \$40

- ★ Hoover No Doubt was the \$67,500 top-selling bull in our history! No Doubt is now deceased and limited semen is available through Alta.
- ★ No Doubt's progeny have met the market's demands for width of base, superior feet, and sound skeletons with real-life true performance and muscle that is not just genomic-based. No Doubt consistently transmits style and eye appeal with an uncommon amount of meat.



Hoover No Doubt B26
\$30,000 No Doubt Son



Hoover No Doubt B474
No Doubt Son
Sells February 4, 2025

- ★ No Doubt daughters topped our 2022 sale at \$26,000 and our 2021 mini online female sale at \$36,500! Most recently, a No Doubt son sired three of the four top-selling bulls at the prestigious Midland Bull Test in 2023! A No Doubt son topped our 2024 sale also.
- ★ Backed by Bullseye and CC&7 – two of the highest proven bulls for Docility in the history of Docility EPD, the No Doubt progeny are unquestionably breed leaders for this important trait!
- ★ Daughters in production offer a notch more frame and very nice udder quality. Their calm demeanor makes them good to work with at calving time.
- ★ Three of No Doubt's sisters have earned Pathfinder status!
- ★ No Doubt was a hunk that turned in an adjusted 1540 pound yearling weight, ratio 113 to be the #1 adjusted yearling weight bull in our sale! He also scanned a 108 IMF ratio, and tied as the top scanning ribeye bull (among 81 yearlings) with a 17.3" ribeye, ratio 114!
- ★ Donor dam J2 is a 10th generation Hoover Angus bred, born, and raised Blackcap Ellston female. She was the lead-off, \$20,000 top-selling open heifer from our 2011 auction. J2 hit her financial stride eight years of age, generating nearly a quarter million dollars of revenue in a 12 month period! In 2021, at 11 years of age, J2 produced the \$158,000 top-selling bull of all breeds at the 2021 Midland Bull Test!
- ★ Owned with Alta Genetics, Rocky View County, AB and Spruce Mountain Ranch, Larkspur, CO.

MOGCK ENTICE



Calved
1-31-17

2577

18952921

[AMF, CAF, D2F,
DDF, M1F, NHF,
OHF, OSF, RDF]



Hoover Mahomes
\$15,500 Entice Son



Udder of Miss Erica Ellston A72
Two year-old Entice Daughter

CED	BW	WW	YW	SC	DOC	HP	CEM	MILK	MB	RE	CLAW	ANGLE
+2	+2.2	+79	+143	+2.31	+32	+13.6	-4	+32	+.83	+.74	+.32	+.46
		20%	15%	1%	4%			15%	30%		3%	

\$M
+58
\$F
+100
\$B
+164 30%
\$C
+271

SydGen Exceed 3223 #
SydGen Enhance #
SydGen Rita 2618

Mogck Sure Shot 253
MOGCK Erica 2255 #
MOGCK Erica 2162

SydGen Googol
SydGen Forever Lady 1255
SydGen Liberty GA 8627 #
Fox Run Rita 9308 #
MOGCK Sure Shot #
Mogck Miss 61
Connealy 5050 611B
MOGCK Erica 08

SEMEN \$25 CERTIFICATES \$40

- ★ Entice yearling bulls topped our 2022 sale, averaging \$9141 on 16 sons! It's easy to see why these cattle are in high demand – they are excellent disposition, high growth cattle with more frame and length of body than offered by most cattle in the Angus breed today. Progeny have excellent thickness, style, and a commanding presence!
- ★ The last few years when we have taken hip height and scrotal measurements on our bulls, we have noticed there are bulls that “filled the chute” width-wise. Almost every single time, these bulls are sired by Entice.

- ★ We weaned over 70 Entice calves in his first calf crop, including the #1 adjusted weaning weight bull AND heifer. Each calf crop has been equally impressive and very well-received by our customers.
- ★ Entice progeny scan well too, with over 1300 progeny at 103 IMF ratio and 100 ribeye ratio with below average fat ratios.
- ★ Entice offers a correct skeleton and exceptional phenotypic presence in a mid-6 frame. He is wide based, super long, big ribbed, square hipped, tight sheathed, and has abundant thickness. Entice exhibits superior foot shape, and we see this in his progeny too – Entice is a proven breed improver for foot shape and ideal foot angle. You can improve testicle size in one generation using Entice too!
- ★ Entice was the \$42,000 top-selling bull in the 2018 Mogck & Sons sale, where the sire group of Enhance sons led-off the sale catalog and produced the top two selling bulls. Entice's Pathfinder dam records 7-104 WR, 7-103 YR, 7-111 IMF ratio, 7-102 ribeye ratio, 7-88 rib fat ratio, and 7-90 rump fat ratio. She produced a full brother to Entice selling for \$11,000, and her five sons have averaged a 792 pound weaning weight
- ★ Entice had a very solid set of performance data: BW 77 lbs., WW 886 lbs., WR 116 among 216 contemporaries, YW 1544 lbs., YR 114, IMF 4.94, ratio 118, ribeye 17.0”, ratio 114.
- ★ Entice was an excellent pen breeder and a high libido bull during natural service.
- ★ Owned with Mogck & Sons, Olivet, SD and Select Sires, Plain City, OH.

HOOVER CHOICE



Calved
1-23-22

A55

20425268



Erica of Ellston T220
Dam of Hoover Choice

CED	BW	WW	YW	SC	DOC	HP	CEM	MILK	MB	RE	CLAW	ANGLE
+10	+.8	+86	+152	+.76	+36	+15.4	+10	+24	+.96	+.78	+.53	+.50
25%		10%	10%		1%	20%			20%			

\$M
+83 10%
\$F
+114 20%
\$B
+183 15%
\$C
+320 10%

Poss Easy Impact 0119
Baldrige Alternative E125
Baldrige Blackbird A030

Baldrige 38 Special #
Erica of Ellston T220
Erica of Ellston R96 #

Poss Total Impact 745 #
Poss Elmaretta 736
Hoover Dam #
Baldrige Blackbird X89
EF Commando 1366 #
Baldrige Isabel Y69
Bruns Top Cut 373 #
Erica of Ellston M38 #

- ★ Hoover Choice is a maternal brother to Alta Genetics' lead-off sire, Bold Ruler!
- ★ Choice is a very good temperament, well-rounded sire from the

most famous cow at Hoover Angus – Erica of Ellston T220. T220 was sold at 8 months of age, and she has been wildly successful for her owners! High-profile programs from across the country now have T220 daughters in their donor line-ups.

- ★ Although a small crop of calves his first year, one Choice son is near the top of the crop and sells in our February 4, 2025 sale.
- ★ Pathfinder donor grandam R96 is the third consecutive generation Pathfinder donor cow. She serves as the 3rd top indexing cow of the Hoover herd with a superior 5-111 wean ratio on her progeny!
- ★ Pathfinder donor great grandam M38 is the highest indexing daughter of G366, the cow regarded as the best cow in our 97-year history! M38 was at one time the #1 indexing cow of the Hoover herd with the tremendous growth she put into her calves. She served as a working donor until 11 years of age.
- ★ At 10 years of age, M38's progeny and grand progeny led-off our 2023 sale catalog and included the 2nd and 3rd top-selling bulls!
- ★ The Ericas have been a dominant force of our top-end genetics for many years. They have proven themselves the hard way – the old-fashioned way – by progeny performance and success. Six of the past 8 years, sons of the Ericas have been the Lot 1 bulls in our sales. In our 2021 auction, of the 8 animals that hit the \$20,000+ price tag, 6 of them were from the Erica cow family.

HIGH POINT INVESTOR



Calved
9-30-19

9207

19824542

[AMF, CAF, D2F,
DDF, M1F, NHF,
OHF, OSF, RDF]

CED	BW	WW	YW	SC	DOC	HP	CEM	MILK	MB	RE	CLAW	ANGLE
+7	+1.8	+78	+138	+64	+26	+11.7	+11	+25	+43	+47	+53	+49
		20%	20%		20%		25%					

\$M
+59
\$F
+91
\$B
+129
\$C
+226

Basin Payweight 1682 #
Deer Valley Growth Fund
Deer Valley Rita 36113

V A R Generation 2100 #
High Point Mimi 777
S A F Mimi 044-M94

Basin Payweight 006S #
21AR O Lass 7017
Plattmire Weigh Up K360 #
Deer Valley Rita 9457
Connealy Consensus 7229 #
Sandpoint Blackbird 8809
Sitz Upward 307R #
XCR Mimi M94

- ★ Investor had an ideal 78 pound birth weight out of a first calf heifer, WW 745 lbs., WR 106, YW 1388 lbs., YR 102. Investor is a stout made, well-rounded, 6 frame bull. As a five year-old bull, Investor's

feet have stayed excellent.

- ★ Investor's first calf crop was small, but none-the-less impressive! In Investor's second crop, a son was the 3rd top weaning weight bull and a daughter was the 4th top weaning weight heifer!
- ★ Investor offers a high Functional Longevity (FL) EPD of +1.14.
- ★ Investor's greatest attribute is his dam and cow family. His dam is a pretty, feminine female that is just the right size. She records 4-107 WR with an excellent 361 day calving interval. She has a square and tidy udder with a small teat size. Her feet are nearly ideal! High Point's Brian Oswald has high praise for the three generations of cows stacked behind Investor for their calm demeanor and mothering ability.
- ★ Investor's grandam records 7-100 WR and 5-106 YR. His great grandam was one of the best cows ever in production at High Point, raising 14 calves with an average 107 WR.
- ★ Owned with High Point Genetics, Osceola, IA.



Maid of Ellston A123
Investor Daughter

BALDRIDGE 38 SPECIAL



Calved
1-13-15

C040

18229487

[AMF, CAF, D2F,
DDF, M1F, NHF,
OHF, OSF, RDF]

CED	BW	WW	YW	SC	DOC	HP	CEM	MILK	MB	RE	CLAW	ANGLE
+8	+2	+72	+126	+1.11	+16	+9.7	+13	+27	+1.01	+35	+30	+39
	30%						10%		20%		2%	15%

\$M
+77 20%
\$F
+94
\$B
+158
\$C
+282 25%

EF Complement 8088 #
EF Commando 1366 #
Riverbend Young Lucy W1470

Styles Upgrade J59 #
Baldrige Isabel Y69
Baldrige Isabel T935

Basin Franchise P142 #
EF Everelda Entense 6117
B/R Ambush 28 #
Riverbend Young Lucy T1080
Sitz Upward 307R #
Plainview Lassie 71B
Baldrige Kaboom K243 KCF #
Baldrige Isabel P4527

SEMEN \$25 CERTIFICATES \$40

- ★ 38 Special sons were crowd favorites for six Hoover Angus sales. One hundred sixteen 38 Special sons to come to auction at Hoover Angus have averaged \$8116! 38 Special progeny have added frame, length, and muscle. Well-documented calving ease, growth, and marbling are trademarks of this sire. Many heifers have calved successfully to 38 Special, and we do recommend him as a safe choice for use on heifers.
- ★ Females have been equally successful in sales as well as real-



Erica of Ellston S7
38 Special Daughter
Pathfinder Hoover Angus Donor



Erica of Ellston X39
\$20,000 38 Special Daughter

world conditions. 38 Special daughters are now in the prime of their life, and we can definitely say 38 Special can improve udders – daughters have superior udder attachment and small teat size.

- ★ Among the top 10 indexing cows in the Hoover herd, 4 are sired by 38 Special, including the #1 cow! Over 600 daughters have an average 101 wean ratio on their progeny.
- ★ 38 Special now has over 900 progeny with a whopping 110 IMF ratio and 100 ribeye ratio!
- ★ In 38 Special's first calf crop, a heifer calf was the #1 adjusted weaning weight heifer of the crop at 872 pounds, which is the heaviest adjusted weaning weight of any female in Hoover history!
- ★ 38 Special was our pick of the bulls in the 2016 Baldrige Sale, where he and his 6 flush brothers averaged \$58,928. 38 Special was the 3rd top-selling bull of the event at \$100,000.
- ★ 38 Special was definitely the power, high performance bull of his flush and a standout with added frame in the Baldrige offering. Viewing the Y69 donor cow prior to purchasing 38 Special, we found her to be everything Jud promised. As her sons are being used heavily now across the breed, Y69 will be remembered as one of the breed's great ones! She is one of the top income-producing cows in the history of the breed.
- ★ Owned with Alta Genetics, Rocky View County, AB and Baldrige Performance Angus, North Platte, NE.



PHENOTYPIC DATA REPORTING

TRAIT	HOOVER ANGUS REPORTS	CONSECUTIVE YEARS OF REPORTING	PERCENTAGE OF REGISTERED ANGUS HERDS REPORTING
CALVING EASE	✓	DECADES	This data is unavailable through the American Angus Association (AAA). However, among the 22,000 members of the AAA, only 627 are committed to fertility and longevity documentation through Maternal Plus®.
BIRTH WEIGHT	✓	DECADES	
WEANING WEIGHT	✓	DECADES	
YEARLING WEIGHT	✓	DECADES	
YEARLING HEIGHT	✓	9	
FEED EFFICIENCY			
SCROTAL	✓	DECADES	
HEIFER PREGNANCY	✓	20	
DOCILITY	✓	20 ★	
CLAW SHAPE	✓	11 ★	
FOOT ANGLE	✓	11 ★	
PAP			
HAIR SHED	✓	5 ★	
MATURE WEIGHT + BODY CONDITION	✓	20	
MATURE HEIGHT	✓	20	
LONGEVITY (COW CULLING CODES)	✓	DECADES	
TEAT	✓	4 ★	
UDDER SUSPENSION	✓	4 ★	
ULTRASOUND CARCASS TRAITS	✓	DECADES	
CARCASS KILL DATA	✓	PERIODICALLY	
GENOMIC PROFILING	✓	16	

★ Hoover Angus began submitting data the first year the American Angus Association accepted data for this trait

Realistic & Reliable EPDs Start with Phenotypic Data

As our breed churns generations faster, we are reminded how important actual phenotypes are. At Hoover Angus, we believe genomics exhibit their full potential only when paired with the accurate collection and submission of phenotypic data – the foundation for realistic and reliable EPDs.

The chart above demonstrates Hoover Angus' commitment to the constant improvement of beef cattle genetics and making genomically-enhanced EPDs the most accurate they can be. Hoover Angus is a leading herd in foot score collection, with over 2600 foot score submissions. We have contributed over 2500 hair shed scores to the database.

Our February 4, 2025 genetics offering will feature 170 lots of bulls, spring and fall bred heifers, open heifers, and embryos from our performance tested, Maternal Plus® herd. Visit www.hooverangus.com or call Landi at 641-344-7684 to request a copy of our catalog.

Landi

97 Years of Quality Angus Cattle

Same Family...

Same Farm...

Same Mission...

Superior Quality