



# Online Sale

Bids Open October 21 - 7:00 pm Central with a soft close  
**October 24, 2023 • 7:00 pm Central**

Hosted by CCI Live at [www.cci.live](http://www.cci.live)

Welcome to our 5th annual mini online fall sale – we appreciate your consideration of our genetics!

The Hoover Angus program has been built upon nearly 100 years of bringing success to commercial cattlemen, primarily in fescue country. Registered breeders have now tapped into Hoover genetics for outcross pedigrees, bringing these same trusted cow families to some of the most premier Angus herds. We are proud to offer you a small sample of these genetics in this sale.

This offering shares our freshest genetics, backed by the cow families that have proven themselves the old-fashioned way – by progeny performance. These 5 lots are offered with the intention of becoming donor cow prospects, as has been the case with many of the females offered in our past mini online sales.

You'll notice the heifers in this offering are backed by our most maternal, prolific cows – the cows that do an excellent job every year. We rarely flush a cow before she has had at least 3 calves so we are certain she represents the type of fertility, quality, and udder structure that is important to our customers.

For more information, contact Landi at 641-344-7684, or reach out to one of our sale consultants: Wes Tiemann 816-244-4462, Zach Moffitt 336-736-6340, Gary Wall 406-208-8536, Dustin Carter 712-898-9972 or Adam Conover 816-676-8560.

Thank you for your time and consideration!

## The Hoover Angus Family



Four generations of the Hoover Angus Family. Front Row: Gwen, John, Ty, Joy & David. Back Row: Landi & Andrew.

LOT  
1

## Pick of the Fall 2022-Born Hoover Angus Heifers

- ★ Choose from the 42 genomic-tested yearling heifers with full performance data from our Maternal Plus herd. Heifers are sired by No Doubt, Entice, Growth Fund, Chattooga, Alternative, Optics, Chairman, and more.
- ★ Daughters out of our best No Doubt donor cow, Miss Blackcap Ellston R199, and one of our best Ericas, R217, are included.
- ★ Every major cow family at Hoover Angus is represented here, with highlights from the Ericas, Queens, Elbamere Queen, Blackcap Empress, and the Blueblood Lady family which traces back 19 generations of consecutive Hoover breeding!
- ★ Daughters, granddaughters, and descendants of many of the greatest cows in our 95 year history for production, fertility, and longevity, such as G366, C50, C344, and N58 are included.
- ★ Eight heifers are out of Pathfinder dams; three of these are backed by two consecutive generations; three of these are backed by three consecutive generations!
- ★ This group of heifers average a WW and YW EPD in the best 15% of the breed, Docility 15%, SC 35%, HP 15%, Claw 25%, Angle 30%, \$M 30%, and \$C 25%.
- ★ Heifers are available for viewing anytime – please call Landi at 641-344-7684. A spreadsheet of EPDs is also available upon request to Landi by phone or [landi@hooverangus.com](mailto:landi@hooverangus.com).
- ★ Hoover Angus reserves the right to retain 8 embryos from the heifer selected from flush(es) at the buyer's convenience and seller's expense.

### Daughters and Descendants of these Maternal Hoover Icons are available in Lot 1



**Erica of Ellston G366**  
 Pathfinder Hoover Donor  
 Candid photo at 8 years of age



**Elbamere Queen Ellston N431**  
 Pathfinder Hoover Donor



**Miss Blackcap Ellston N58**  
 Pathfinder Hoover Donor  
 Flush Sister to No Doubt



**Queen of Ellston C50**  
 Pathfinder Hoover Donor  
 Candid photo at 12 years of age

LOT  
2

# Erica of Ellston B70



20722190

BW	WW	YW	SC	HP	CEM	MILK
+ 1.2	+79	+131	+1.90	+12.4	+10	+37
DOC	CW	MB	RE	\$M	\$B	\$C
+26	+51	+.42	+.84	+86	+120	+242

Musgrave 316 Stunner  
**E L K TROPHYCLASS +**  
 Pine Coulee Black Annie U7 +  
 Basin Excitement #  
**ERICA OF ELLSTON M38 #**  
 Erica of Ellston G366 #

LD Capitalist 316 #+  
 MCATL Blackbird 831-1378 #  
 Connealy Onward #  
 War Hill Blackbone Annie  
 Basin Expedition R156 +  
 Basin Lady S532 AK  
 SydGen C C & 7 #  
 Erica of Ellston D184

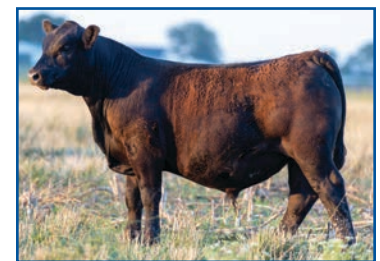
- ★ **Selling ½ interest and no possession.**
- ★ This marks the first time in our history we have offered ½ interest in a Hoover female at public auction!
- ★ Landi's favorite heifer of the crop! Although it is extremely rare for us to flush an un-proven female, B70 offers as much promise as any. Her style, femininity, thickness, and structure brings her to the top of her crop!
- ★ When Gary Wall visited Hoover Angus shortly after the weaning of our spring crop, he immediately honed in on B70, commenting, "She's the next maternal matriarch of Hoover Angus!"
- ★ As heart health has become a buzz word of the Angus breed, B70 offers a positive contribution with a top 1% PAP EPD!
- ★ B70 is the last daughter of the great M38 cow, who was the highest indexing daughter of G366, the cow regarded as the best cow in our 95 year history!
- ★ The Ericas have been a dominant force of our top-end genetics for many years. They have proven themselves the hard way – the old-fashioned way – by progeny performance and success. Seven of the past 8 years, sons of the Ericas have been the Lot 1 bulls in our sales. In our 2021 auction, of the 8 animals that hit the \$20,000+ price tag, 6 of them were from the Erica cow family.
- ★ At 10 years of age, M38's progeny and grand progeny led-off our 2023 sale catalog and included the 2<sup>nd</sup> and 3<sup>rd</sup> top-selling bulls of the sale! M38's six progeny to come to auction have averaged \$18,450!
- ★ M38 earned Pathfinder honors and records a whopping 8-110 WR to be the 8<sup>th</sup> top indexing cow of the Hoover herd! Her first son was the Lot 1, \$14,500 bull in our 2016 sale. After that, her next three daughters were the #1 adjusted weaning weight heifer calves of their respective crops! M38's ET progeny dominated our ET crop in 2022.

- ★ M38 has been a fertile cow, recording a 355 day calving interval on her first 5 calves before we pulled her out of production for a year to flush her. She is an icon in the herd for her unbeatable depth of body and broodiness. She makes feminine daughters and masculine bulls.
- ★ M38's daughters are following in her footsteps of being highly productive, fertile cows. M38's most recent replacement daughter in our herd weaned the #1 adjusted weaning weight heifer calf of our 2023 crop!
- ★ Note that M38 is found in the pedigrees of the Lot 3 heifers. Please read about M38's highest profile daughter and granddaughter, R96 and T220, in the footnote of Lot 3. See pictures of these females and many other Ericas on the following page.
- ★ A full sister to M38 serves as a working Pathfinder donor in the Hoover herd. This cow, N54, has put one of her own Pathfinder daughters in the herd plus one daughter serving as a working donor.

- ★ Pathfinder donor grandam G366 is the epitome of what a model Angus female should be. Currently, two direct daughters of G366 rank in the top 15 indexing cows of the herd, and 5 other descendants make this prestigious herd list! No cow family has ever had this much presence on this distinguished herd list before!
- ★ G366's udder at over 12 years of age would rival most 3-4 year-old females in the breed today, and she consistently passes this trait on through the generations.
- ★ Four direct daughters of G366 have earned the Pathfinder designation, as well as more descendants! At least 15 of her daughter descendants have served as donors. G366 grossed \$238,000 worth of direct progeny sales, not including embryos sold.
- ★ Too numerous to mention are G366's progeny that have found themselves in the very top of the crop for weaning weight. It is neat, however, that she had three-in-a-row #1 adjusted weaning weight calves of their respective crops. Even at 12 years of age, her growth genetics were still powerful, as an ET daughter was the #1 adjusted weaning weight ET heifer of her crop!
- ★ At the end of her career, G366 recorded 9-98 BWR and 9-107 WR on her natural calves.
- ★ Sire Trophyclass was brought to Hoover Angus as the phenotypic standout of Tyler & Meg Scales' 2021 bull crop. His phenomenal producing dam is still going strong at 15 years of age. We expect Trophyclass daughters to leave a legacy for not only phenotype, but fertility, longevity, structure, foot quality and optimum growth and carcass qualities.



**E L K Trophyclass**  
Sire of Lot 2



**Hoover Trophyclass B57**  
Flush Brother to Lot 2  
Candid Photo Pre-weaning

# The Ericas



**Erica of Ellston M38**

Pathfinder Hoover Donor  
Dam of Lot 2; Grandam (B13) and Great  
Grandam (B38) of Lot 3



**Erica of Ellston R96**

Pathfinder Hoover Donor  
Maternal Sister to Lot 2; Dam (B13) and  
Grandam (B38) of Lot 3



**Erica of Ellston T220**

Maternal Sister to Lot 3 (B13)  
Dam of Lot 3 (B38)



**Erica of Ellston A12**

\$10,000 Relative of Lots 2-3



**Erica of Ellston A10**

\$10,000 Relative of Lots 2-3



**Erica of Ellston A18**

Relative of Lots 2-3



**Erica of Ellston Z37**

\$36,500 Relative of Lots 2-3



**Erica of Ellston R217**

Pathfinder Hoover Donor  
Relative of Lots 2-3



**Erica of Ellston N54**

Pathfinder Hoover Donor  
Relative of Lots 2-3



**Erica of Ellston G366**

Pathfinder Hoover Donor  
Ancestor of Lots 2-3



**Erica of Ellston S7**

Pathfinder Hoover Donor  
Relative of Lots 2-3



**Erica of Ellston L5**

Hoover & Baldrige Donor  
Relative of Lots 2-3



**Erica of Ellston T64**

Hoover Donor  
Relative of Lots 2-3



**Erica of Ellston Z40**

\$30,000 Relative of Lots 2-3



**Erica of Ellston X124**

\$35,000 Relative of Lots 2-3

## Sons of the Ericas



**Hoover Dam**

All-time ORigen Sales Leader  
Relative of Lots 2-3



**Hoover Alternative A54**

\$23,000 Maternal Brother to  
Lot 3 (B38) & Relative of Lots 2-3



**Hoover Creed A7**

\$20,000 Maternal Brother to Lot 2  
Relative of Lot 3



**BA7 Oaks Bold Ruler**

Relative of Lots 2-3

LOT  
3

# Aspiration from Choice of the Ericas

## Erica of Ellston B13



20722187

BW	WW	YW	SC	HP	CEM	MILK
+3.1	+74	+139	+1.35	+15.8	+11	+27
DOC	CW	MB	RE	\$M	\$B	\$C
+26	+71	+1.80	+1.02	+92	+185	+332

Mogck Bullseye #  
**HOOVER NO DOUBT +**  
Miss Blackcap Ellston J2

Bruns Top Cut 373 #  
**ERICA OF ELLSTON R96 #**  
Erica of Ellston M38 #

MOGCK Sure Shot #  
Mogck Mary 1255  
SydGen C C & 7 #  
Miss Blackcap Ellston D154 #  
Bruns Uppercut 610  
Dakota Miss 669 Baf #  
Basin Excitement #  
Erica of Ellston G366 #

- ★ Selling an IVF aspiration on *choice* of these two heifers. Hoover Angus guarantees a minimum of 6 IVF embryos with a minimum of 2 resulting pregnancies. This lot will sell on a per embryo basis X number of embryos collected.
- ★ B38 will be a 5<sup>th</sup> generation donor from this highly potent cow family and **her \$M ranks among the best 48 non-parent females of the breed!** B38 is a feminine, thick female that carries the look of her mother in a more moderate sized package.
- ★ B13 is a pretty fronted, thick, power heifer that brings together the two most famous cow families at Hoover Angus – the Ericas on the bottom and the Blackcaps on top. Ten Pathfinders are found in her 3-generation pedigree!
- ★ Pathfinder donor dam Erica of Ellston R96 (dam of B13; granddam of B38) is the 5<sup>th</sup> top indexing cow in the Hoover herd with a whopping 5-111 wean ratio! R96's five daughters have averaged \$19,000 and her 8 sons \$10,800 to gross over \$180,000. Nine of her progeny have been photo features.
- ★ Despite stealing a flush after each of her first 3 calvings, R96 still achieved an amazing 356 day calving interval! This cow family exemplifies fertility.
- ★ Numerous R96 progeny have come to the top of their crop for phenotype, weaning weight and IMF. Her 2020 son was the #1 WW ET bull of his crop and went on to be the #1 yearling weight bull of our 2021 sale, where he was the Lot 1 featured



**Hoover No Doubt**  
Sire of Erica of Ellston B13

## Erica of Ellston B38



20723338

BW	WW	YW	SC	HP	CEM	MILK
+1.1	+83	+137	+0.04	+17.2	+12	+32
DOC	CW	MB	RE	\$M	\$B	\$C
+37	+53	+1.13	+0.58	+119	+154	+319

Connealy Confidence 0100 #  
**CONNEALY CONFIDENCE PLUS #**  
Elbanna of Conanga 1209

Baldrige 38 Special #+  
**ERICA OF ELLSTON T220**  
Erica of Ellston R96 #

Connealy Tobin  
Becka Gala of Conanga 8281  
Connealy Consensus #  
Elbasta of Conanga 9703  
EF Commando 1366 #  
Baldrige Isabel Y69  
Bruns Top Cut 373 #  
Erica of Ellston M38 #

- bull and 3<sup>rd</sup> top-selling bull of the event. The year prior, R96's super stout son was the #1 IMF scanning bull of our sale. R96 records an impressive 19-109 IMF ratio.
- ★ Superior udders run in this cow family, and many generations of cows down the dam's side of these pedigrees have been excellent uddered cows, even into old age.
- ★ Erica of Ellston T220 (dam of B38, maternal sister to B13) was the 3<sup>rd</sup> top weaning weight heifer calf of her crop, and is quickly becoming the most recognized Hoover-bred female.
- ★ T220 has already put four bulls in the Alta bull stud, BA7 Oaks Bold Ruler (the lead-off bull in the 2023 Alta Genetics catalog), BA7 Oaks Credence, 7 Oaks Pappy and 7 Oaks Influence. Bold Ruler boasts a \$Maternal and \$Combined Values well above the best 1% of the breed!
- ★ A T220 son topped the 2023 Baldrige Performance Angus Sale at \$100,000.
- ★ T220's progeny grossed over \$200,000 before she turned 4 years of age (10-fold gain on investment from the group's purchase price of \$20,000)! T220 serves as a working donor for 2S Angus, 7 Oaks Angus, Baldrige Performance Angus, and KDS Angus.
- ★ T220 produced 52 embryos as a coming yearling heifer, and bred back first service AI for her first natural calf. This natural calf weaned off an adjusted 799 pounds (no creep). T220's first four ET progeny through AHIR averaged an adjusted 855 pound weaning weight!
- ★ T220 owner Jason & Jess Schroeder of 7 Oaks Angus, "T220 has been a blessing to us. She is truly a once-in-a-lifetime cow that has stamped her progeny in our herd. She will be a base in our genetics for generations to come."
- ★ We retained a flush on T220 which resulted in two sons selling for \$23,000 and \$15,000 in our 2023 sale, and this B38 heifer.
- ★ Please read about the M38 cow in the footnote of Lot 2.
- ★ Hoover Angus will provide transportation of donor to collection facility. Flush expenses will be the responsibility of the purchaser.

# LOT 4 Pick of the Blackcaps

## Blackcap Empress Ellston B15



BW	WW	YW	SC	HP	CEM	Milk
+2	+81	+138	+58	+13.0	+9	+36
DOC	CW	MB	RE	\$M	\$B	\$C
+25	+63	+59	+90	+98	+153	+296

## Blackcap Empress Ellston B1



BW	WW	YW	SC	HP	CEM	Milk
-7	+78	+129	+1.10	+11.0	+13	+30
DOC	CW	MB	RE	\$M	\$B	\$C
+24	+58	+49	+81	+72	+139	+252

## Blackcap Empress Ellston B9



BW	WW	YW	SC	HP	CEM	Milk
+1.0	+80	+131	+1.03	+14.8	+8	+31
DOC	CW	MB	RE	\$M	\$B	\$C
+19	+56	+66	+58	+84	+138	+263

## Blackcap Empress Ellston B19



BW	WW	YW	SC	HP	CEM	Milk
-3	+71	+117	+1.28	+12.1	+9	+33
DOC	CW	MB	RE	\$M	\$B	\$C
+20	+54	+55	+58	+88	+137	+266

Mohnen General 548 +  
**MOHNE GENERAL LEE**  
 Mohnen Jilt 1848

Baldrige Chairman  
**BLKCP EMPRESS ELLSTON T184 #**  
 Blackcap Empress Ellston R92

Baldrige Colonel C251 #+  
 S A V Madame Pride 5290  
 S A V Sensation 5615 #+  
 Mohnen Jilt 2504 #  
 Fortunes Conquest 224  
 Baldrige Isabel B061  
 Bruns Top Cut 373 #  
 Blkcp Empress Ellston L299

- ★ The pick of the Lot 4 heifers represents the opportunity to tap into one of the longest-standing cow families at Hoover Angus! These heifers are 17<sup>th</sup> generation Blackcap Empress Ellston females to be bred, born, and raised by the Hoover family, starting with herd founder Walt Hoover! They trace back to Walt's foundational sire, Revolution's Bell Boy, who sired calves naturally until 14 years of age.
- ★ This was the standout flush of our entire crop! Visitors to the farm this summer routinely picked heifers from this flush as the "best of the crop." We can't wait to get these massive, thick, broody heifers into production!
- ★ Dam T184 is the kind of cow that can knock it out of the park every year with her progeny. She's a low birth weight cow whose calves get right up and grow rapidly. She records 4-97 BWR, 4-108 WR, and 3-103 YR on her natural progeny. Her superb calving

- interval of 357 days (which includes stealing flushes) helped her earn elite Pathfinder honors. T184 also records 3-123 IMF ratio and 3-100 ribeye ratio.
- ★ T184 was selected to serve as a donor because of her fertility, superior udder quality, and progeny performance – traits that run strong in this cow family. She's that extraordinary cow that can raise a whopper of a calf with a remarkably tidy udder! T184's sons that are flush mates to these heifers will be some of our top featured bulls in our February 6, 2024 sale. T184 has proven she has earned a spot among the most elite donors at Hoover Angus!
- ★ T184's first son was the #1 weaning weight bull of his crop, and the 2<sup>nd</sup> top-selling bull of our 2022 sale to John Orr at \$20,000.
- ★ T184's 2022 son was the 6<sup>th</sup> top weaning weight bull of his crop and had the #1 CED and CEM EPDs in our 2023 sale. This featured bull sold for \$10,500 to long-time

- repeat customer Roger Cerven. He was super stout, slick haired, and long.
- ★ T184 scanned an 8.76 IMF, ratio 201 to be the #1 IMF heifer of her crop!
- ★ Grandam R92 serves as one of the herd's top IMF ratio cows with a whopping 5-133 IMF ratio! R92 maintains a 366 day calving interval.
- ★ Great grandam L299 had a 362 day calving interval on her 8 calves when she was lost to an injury.
- ★ Searching back through this cow line you will find the C109 cow, who is regarded as one of the best cows of her day. C109 served as the herd's 13<sup>th</sup> top indexing cow at the time of her passing – the oldest cow on this prestigious list! She recorded 10-97 BWR, 10-109 WR, 10-106 YR with a 361 day calving interval on 11 pregnancies (a set of high performing twins are not included in her ratios). She was the dam of the \$25,000 Hoover Headliner.
- ★ C109 was one of only a handful of donor cows that have earned a burial spot north of our bull barn. She and her sire, Gridiron, had highly successful careers at Hoover Angus, and were buried in the same grave on the same day.
- ★ C109's grandam was J350, who recorded 13-104 WR at the end of her career with a 366 day calving interval! She served as one of the herd's first Pathfinder cows.
- ★ This flush of heifers is from the first crop of General Lee calves at Hoover Angus. General Lee was selected to improve dispositions, feet, and udders while maintaining very strong phenotype and structure. His calves are Landi's favorite sire group this year, with this flush dominating the heifer crop. A General Lee son was the #1 adjusted weaning weight bull of the Hoover crop. We were impressed with the young General Lee calves and used the bull again heavily for our 2024 crop.
- ★ Hoover Angus reserves the right to retain 8 embryos from the heifer selected from flush(es) at the buyer's convenience and seller's expense.



**Blkcp Empress Ellston T184**  
 Pathfinder Hoover Donor  
 Dam of Lot 4 Heifers

LOT  
5

# Pick of the N58 Heifer Calves

Miss Blackcap Ellston B42



20723450

BW	WW	YW	SC	HP	CEM	Milk
+5.0	+91	+161	+.95	+10.5	+5	+34
DOC	CW	MB	RE	\$M	\$B	\$C
+33	+88	+70	+.89	+53	+189	+298

Woodhill Blueprint  
**MYERS FAIR-N-SQUARE M39**  
Myers Miss Beauty M136

Mogck Bullseye #  
**Miss Blackcap Ellston N58 #+**  
Miss Blackcap Ellston J2

Connealy Confidence Plus #  
Woodhill Evergreen Z291-B233  
Connealy Thunder #  
Myers Miss Beauty M476 #  
MOGCK Sure Shot #  
Mogck Mary 1255  
SydGen C C & 7 #  
Miss Blackcap Ellston D154 #

- ★ Possibly the neatest pedigree heifer to sell today, these flush sisters have sure been exciting to watch grow up this summer! Fair-N-Square progeny have been very popular this year across the country!
- ★ Approaching 10 years of age, donor dam N58 is still going strong! She is No Doubt's best flush sister. She records 6-93 BWR and 6-103 WR on her natural progeny, with 11-114 IMF ratio and 11-101 Ribeye ratio. She had a 348 day calving interval before we pulled her out of production to flush her for a year.
- ★ N58 is one of *three* Pathfinder full sisters to No Doubt! The other two sold to Dixie Valley Ranch for \$60,000 and Wall Street Cattle Co. for \$27,500!

Miss Blackcap Ellston B55



20723451

BW	WW	YW	SC	HP	CEM	Milk
+3.7	+90	+161	+.65	+11.7	+5	+27
DOC	CW	MB	RE	\$M	\$B	\$C
+34	+79	+77	+1.02	+66	+194	+318

- ★ A flush to the bull of the buyer's choice from N58 sold in our 2019 auction for \$24,000 to Lylester Ranch!
- ★ N58 offers a high growth profile of EPDs, with 7 EPDs or \$Values in or above the best 1% of the breed at nearly 10 years of age!
- ★ **N58 is one of only two Pathfinder cows in America with a +40 Docility EPD or higher!** She is undoubtedly a disposition improver and one of the calmest cows in the herd.
- ★ At 850 pounds, WR 119, N58 was the #1 adjusted weaning weight heifer of her crop, and at the time, the #1 weaning weight female ever at Hoover Angus! She was phenotypically one of the best among 150+ peers. She had a YW 1244 lbs., YR 120, 6.80 IMF, ratio 143, ribeye 13.3", ratio 111.
- ★ Additional Sisters: #20723453 and #20723454.
- ★ Hoover Angus reserves the right to retain 8 embryos from the heifer selected from flush(es) at the buyer's convenience and seller's expense.



**Miss Blackcap Ellston N58**  
Pathfinder Hoover Donor  
Dam of Lot 5 Heifers



**Hoover No Doubt**  
Flush Brother to the Dam of Lot 5