



Online Sale

Bids Open October 22 - 7:00 pm Central with a soft close
October 25, 2022 • 7:00 pm Central
 Hosted by CCI Live at www.cci.live

Welcome to our 4th annual mini online fall sale – we appreciate your consideration of our genetics! This is the only time of year we offer embryos, pregnancies, and “picks” of our freshest genetics, backed by the cow families that have proven themselves the old-fashioned way – by progeny performance. These 5 lots are offered with the intention of becoming donor cow prospects, as has been the case with many of the females offered in our past mini online sales. Check out the included page of “Success with Hoover Genetics” to see some of the advancements and achievements Hoover females have brought to their new owners.

As our ET efforts have dramatically increased the number of superior Ericas we have, we are able to share more of the top end of these females – lots 2, 4, and 5 represent these opportunities.

For more information, contact Landi at 641-344-7684, or reach out to one of our sale consultants: Wes Tiemann 816-244-4462, Chris Earl 630-675-6559, Zach Moffitt 336-736-6340, and AAA Regional Manager Adam Conover 816-676-8560.

Thank you for your time and consideration!

The Hoover Angus Family



Four generations of the Hoover Angus Family: David & Joy McFarland; Andrew, Landi, Gwen & Ty Livingston; John Kiburz.

LOT 1 Pick of the Fall 2021-Born Hoover Angus Heifers

- ★ Choose from the entire crop of 45 genomic-tested fall-born yearling heifers, sired by No Doubt, Entice, Goalkeeper, Tahoe, Deluxe, Playbook, and more!
- ★ Daughters out of No Doubt donor cows Blackcap Empress Ellston S86 (dam of Lot 3) and the now deceased Miss Blackcap Ellston R199 are included.
- ★ Every major cow family at Hoover Angus is represented here, with highlights from the Ericas, Queens, Blackcap Empress, and the Blueblood Lady family which traces back 19 generations of consecutive Hoover breeding!
- ★ Daughters, granddaughters, and descendants of many of the greatest cows ever in our 94 year history for production, fertility, and longevity, such as C50, C344, G366, C109, and L5 are included.
- ★ Eight heifers rank in the best 1% of the breed for \$M; and additional 12 in the best 2-10%; the entire group averages a \$M in the best 15%!
- ★ This group of heifers average a WW and YW EPD in the best 15% of the breed, Docility 20%, SC 25%, HP 15%, Claw 20%, Angle 30%, \$M 15%, and \$C 20%.
- ★ Heifers are available for viewing anytime – please call Landi at 641-344-7684. A spreadsheet of EPDs is also available upon request to Landi by phone or landi@hooverangus.com.
- ★ Hoover Angus reserves the right to retain 8 embryos from the heifer selected from flush(es) at the buyer's convenience and seller's expense.



Miss Blackcap Ellston Z400 – Available in the Lot 1 Pick

BW	WW	YW	SC	DOC	Milk	HP
+1.4	+91	+152	+1.34	+26	+21	+12.7
HS	CW	MB	RE	\$M	\$B	\$C
+20	+69	+48	+77	+96	+144	+283

**Daughters and Descendants
of these Maternal Hoover Icons
are available in Lot 1**



Miss Blackcap Ellston R199
Hoover Angus Donor



Blackcap Empress Ellston C344
Pathfinder Hoover Donor
Photo at 8 years of age



Queen of Ellston C50
Pathfinder Hoover Donor
Candid photo at 12 years of age



Erica of Ellston L5
Hoover Angus Donor

Pick of the Erica ET Heifers



Erica of Ellston A10

BW	WW	YW	SC	DOC	Milk	HP
+4.6	+93	+167	+1.35	+34	+33	+12.3
HS	CW	MB	RE	\$M	\$B	\$C
+20	+85	+38	+1.18	+71	+179	+303



Erica of Ellston A12

BW	WW	YW	SC	DOC	Milk	HP
+2.2	+91	+162	+.83	+30	+37	+14.4
HS	CW	MB	RE	\$M	\$B	\$C
+.31	+67	+.62	+1.18	+76	+164	+289



Erica of Ellston A18

BW	WW	YW	SC	DOC	Milk	HP
+.9	+84	+150	+1.91	+38	+34	+11.7
HS	CW	MB	RE	\$M	\$B	\$C
+.32	+56	+.61	+.66	+90	+139	+270



Erica of Ellston A32

BW	WW	YW	SC	DOC	Milk	HP
+.4	+74	+132	+.66	+32	+28	+18.2
HS	CW	MB	RE	\$M	\$B	\$C
+.37	+64	+.31	+1.13	+94	+153	+292



Erica of Ellston A13

BW	WW	YW	SC	DOC	Milk	HP
+2.9	+65	+121	+2.08	+26	+24	+15.4
HS	CW	MB	RE	\$M	\$B	\$C
+.45	+76	+.57	+1.16	+78	+180	+311

- ★ From the greatest cow family in our 94-year history, ONE of these Ericas will leave the farm!
- ★ Choose from among all 14 Erica ET heifers born in our spring 2022 crop! These Erica donor dams are some of the most highly proven and productive cows we have!
- ★ Heifers are from the following flushes:
 - ★ Erica of Ellston M38 X Baldridge SR Goalkeeper (4 heifers)
 - ★ A10, A12, and A18 pictured above
 - ★ Erica of Ellston R65 X Hoover No Doubt (1 heifer)
 - ★ A13 pictured above
 - ★ Erica of Ellston R96 X Baldridge 38 Special (1 heifer)
 - ★ Erica of Ellston P445 X Hoover No Doubt (2 heifers)
 - ★ Erica of Ellston R217 X Mogck Entice (5 heifers)
 - ★ A32 pictured above
 - ★ Erica of Ellston M38 X Ellingson Homestead (1 heifer)
- ★ The Ericas have been a dominant force of our top-end genetics for many years. They have proven themselves the hard way – the old-fashioned way – by progeny performance and success. Six of the past 7 years, sons of the Ericas have been the Lot 1 bulls in our sales. In our 2021 auction, of the 8 animals that hit the \$20,000+ price tag, 6 of them were from the Erica cow family.
- ★ Pathfinder donor dam **M38** serves as the 4th top indexing cow of the Hoover herd 7-112 WR! Her first son was the Lot 1, \$14,500 bull in our 2016 sale. After that, her next three daughters were the #1 adjusted weaning weight heifer calves of their entire crop! M38's ET progeny (offered in this flush) dominated our ET crop this year. The bull flush mates to these heifers will highlight our February sale, and visitors to the farm routinely pick M38 progeny as the top of the crop.
- ★ Pathfinder donor dam **R96** is the #1 indexing cow in the Hoover herd with a whopping 4-114 wean ratio! R96's five daughters have averaged \$19,000 and her 7 sons \$11,150 to gross \$172,750. Eight of her progeny have been photo features. Her daughter offered in this pick is a full sister to the \$200,000 valuation Erica of Ellston T220

female – see more about her in this flyer on the “Success with Hoover Genetics” page.

- ★ Donor dam **R65** was the 2nd top-selling bred heifer in our 2018 auction, and her daughter offered here was a result of a flush retained out of her. R65 records a whopping 3-126 wean ratio for her owner Moon Creek Farms. If she were in the Hoover herd with those ratios, she would easily be the #1 indexing cow! R65's daughter topped the 2022 Moon Creek Sale at \$22,000! The year earlier, R65 produced Moon Creek's top-selling pregnancy.
- ★ Donor dam **R217** is a highly successful Pathfinder, donor, and Maternal Plus enrolled cow with a perfect 353 day calving interval. Her sons to come to auction have averaged \$12,350, and she has one working donor in the Hoover herd, and one more daughter going into the herd next spring. R217 records a superior 4-97 BWR, 4-105 WR, and 4-106 YR.
- ★ Donor dam **P445's** oldest daughter ties as the 7th top indexing cow of the Hoover herd with 2-110 WR.
- ★ The heifers in Lot 2 all descend from the great G366 cow, who is considered the best cow in our history. Her udder at over 12 years of age would rival most 3-4 year-old females in the breed today.
- ★ Currently, three direct daughters of G366 rank in the top 15 indexing cows of the herd, and one granddaughter serves as the #1 indexing cow!
- ★ Three daughters of G366 have earned the Pathfinder designation, and it looks like one more will have met the criteria to be on the report this coming spring. At least 15 of her daughter descendants have served as donors. G366 grossed \$238,000 worth of direct progeny sales, not including embryos sold.
- ★ Superior udders run in this cow family, and many generations of cows down the dam's side of this pedigree have been excellent uddered cows, even into old age.
- ★ Contact Landi for a full list of registration numbers and EPDs on the 14 heifers.



Erica of Ellston M38
Pathfinder Hoover Donor
Dam of Four Heifers in Lot 2



Erica of Ellston R217
Pathfinder Hoover Donor
Dam of Five Heifers in Lot 2



Erica of Ellston T220
Flush Sister Sells in Lot 2



Erica of Ellston R65
Dam of One Heifer in Lot 2



Erica of Ellston N54
Pathfinder Hoover Donor
Grandam of Five Heifers in Lot 2



Erica of Ellston G366
Pathfinder Hoover Donor
Second, third, or fourth generation dam of Lot 2



Erica of Ellston L5
Hoover Angus Donor



Erica of Ellston S7
Hoover Angus Donor



Erica of Ellston Z39
\$20,000 Female



Erica of Ellston V88
\$32,000 Female



Erica of Ellston X39
\$22,000 Female



Erica of Ellston Z37
\$36,500 Female



Erica of Ellston Z40
\$30,000 Female



Erica of Ellston X124
\$35,000 Female



Erica of Ellston X52
\$18,000 Female



Erica of Ellston X54
\$15,000 Female

LOT
3

Frozen Embryos

Diablo Deluxe 1104
GALAXY DETAIL 8546 +
Galaxy Blackbird 4551 +

Hoover No Doubt +
BLACKCAP EMPRESS ELLSTON S86
Blkcp Empress Ellston L434

V A R Discovery 2240 #
Diablo Erica Dianna 9034
EXAR Denver 2002B #
Galaxy Blackbird 2102 +
Mogck Bullseye #
Miss Blackcap Ellston J2
SydGen Journey 8200
Blkcp Empress Ellston G483

PROJECTED CALF EPDS

BW	WW	YW	SC	DOC	Milk	HP
+1.9	+87	+150	+1.81	+20	+26	+14.8
HS	CW	MB	RE	\$M	\$B	\$C
+.55	+77	+.88	+.86	+71	+191	+318

- ★ Selling four conventional embryos, guaranteeing two pregnancies.
- ★ Donor dam S86 is a 13th generation bred, born, and raised Blackcap Empress Ellston female from Hoover Angus!
- ★ A full sib to these embryos born in the fall of 2021 is one of the nicest heifers in our 2021 crop, and was the 2nd top adjusted weaning weight ET heifer of her crop.
- ★ S86's first daughter was the 5th top adjusted weaning weight heifer of her crop at 740 pounds and went on to scan the 2nd biggest ribeye of her crop and the 8th top IMF! This female works in the Hoover herd with 2-101 WR and a 350 day calving interval.
- ★ S86's 2022 bull calf weaned at 838 pounds to tie as the 13th top weaning weight bull of our spring crop.
- ★ S86 is a descendant of the great C57 cow. Eighty-six daughter descendants have stemmed from C57, including 17 Pathfinders and 8 donor cows! Four bulls selected for use in the Hoover herd have also stemmed from C57. C57 has helped write the history books at Hoover Angus.
- ★ Sire Galaxy Detail was the \$45,000 top-selling bull from the 2020 Galaxy Beef Sale. This super slick haired bull combined a unique EPD profile, superior thickness and top, plenty of rib, and a big scrotal. With over 100 progeny now through AHIR, Detail's EPDs have held strong.



Blackcap Empress Ellston S86 – Dam of Lot 3



Galaxy Detail 8546
Sire of Lot 3



Udder of Blackcap Empress Ellston S86
Dam of Lot 3

LOT
4

Pick of the R217 Heifer Calves

RAML Rangefinder 7536
RAML OPTICS 0710
RAML Ruby 710 +

Bruns Top Cut 373 #
ERICA OF ELLSTON R217 #
Erica of Ellston N54 #+

GDAR Leupold 298 #
RAML Royce 536
Barstow Cash #
RAML Ruby 319 #
Bruns UpperCut 610
Dakota Miss 669 Baf #
Basin Excitement #
Erica of Ellston G366 #

PRE-GENOMIC CALF EPDS

BW	WW	YW	SC	DOC	MILK	HP
+1.0	+73	+131	+.68	+31	+27	+15.7
HS	CW	MB	RE	\$M	\$B	\$C
+.55	+63	+.24	+.83	+75	+150	+270

- ★ Choose from among the four R217 heifer calves born in August of 2022. This will be the first daughter offered for sale by this great female and the first Optics calf to sell! With one daughter in the herd that serves as a working donor, and another bred heifer daughter retained as a replacement, we felt we could offer the buyer's choice of these heifer calves!
- ★ Donor dam R217 is a third generation Pathfinder, donor, *and* Maternal Plus enrolled cow from the most highly proven cow family in our 94 year program!
- ★ R217 has a 353 day calving interval and 4-97 BWR, 4-105 WR, and 4-106 YR. Her first three sons to come to auction have averaged \$12,350!
- ★ A daughter of R217 had the #1 IMF scan at Hoover Angus in well over 20 years of ultrasound!
- ★ Grandam N54 has proven her worth over and over again – she records a perfect 365 day calving interval with 7-93 BWR and 7-104 WR. Six daughters work in the herd!
- ★ Great grandam G366 should need no introduction to our repeat customers – she is regarded as the best cow in Hoover Angus history! The Lot 2 heifers all descent from G366, as well as the Lot 5 pregnancy.
- ★ Genomic results on these heifers will be available early to mid-October and available upon request. EPDs printed above are pre-genomics.
- ★ Sire Optics was our most heavily used sire in 2022, and sired our #1 adjusted weaning weight bull calf of our spring 2022 crop. Calves are stylish, correct, and stout.



Erica of Ellston R217
Pathfinder Hoover Donor Dam of Lot 4



Raml Optics 0710
Sire of Lot 4



Erica of Ellston N54
Pathfinder Hoover Donor
Grandam of Lot 4

- ★ After a rigorous search, Optics was selected by the Hoover family. He offered one of the most optimal balances between EPD excellence, phenotype and structural correctness, and maternal success. Optics is not extreme in any one area, but optimal in nearly every area – a solid mating for one of our most proven cows!
- ★ Lot 4 offers a unique, outcross pedigree to the vast majority of the Angus breed, and offers unlimited mating potential!



Erica of Ellston M38 – Pathfinder Hoover Donor Dam of Lot 5

LOT
5

Heifer Calf Pregnancy

CTS Remedy 1T01 #
ELLINGSON HOMESTEAD 6030
EA Erica 1082

Basin Excitement #
ERICA OF ELLSTON M38 #
Erica of Ellston G366 #

Connealy Thunder #
CTS 7V03 Bellemere Maid 9T02
LT Territory 5824 of EA #
S A V Alliance 2606
Basin Expedition R156
Basin Lady S532 AK
SydGen C C & 7 #
Erica of Ellston D184

PROJECTED CALF EPDS

BW	WW	YW	SC	DOC	Milk	HP
+1.8	+81	+145	+1.08	+27	+34	+19.0
HS	CW	MB	RE	\$M	\$B	\$C
+.35	+64	+.34	+.63	+89	+145	+276

- ★ Pathfinder donor dam M38 serves as the 4th top indexing cow of the Hoover herd 7-112 WR! Her first son was the Lot 1, \$14,500 bull in our 2016 sale. After that, her next three daughters were the #1 adjusted weaning weight heifer calves of their entire crop!
- ★ M38's ET progeny dominated our crop in 2022 – under Lot 2, her daughters include pictured heifers A10, A12, and A18. The bull flush mates to these heifers will highlight our February sale, and visitors to the farm routinely pick M38 progeny as the top of the crop.
- ★ M38 is the dam of the great Erica of Ellston R96 cow, a third generation Pathfinder, donor, and Maternal Plus enrolled cow that serves as the #1 indexing cow of the Hoover herd!
- ★ As a nine year-old cow, with 26 progeny records through AHIR, M38 still ranks in the best 1% of current dams for WW EPD! Her \$Maternal of +98 is well above the best 1% of current dams! Also very important to breeders is her HP in the best 3%, Docility above the best 1%, and Hair Shed best 4%.
- ★ Space does not permit to tell the successes of this cow family, but look back through our past catalogs to see what a phenomenal job they have done!
- ★ Although oftentimes lost in an industry chasing elite EPDs, M38 and this cow family have exceptional mothering ability – something not measured by any EPD. Their udder quality and teat size is as good as can be found!
- ★ Five year-old recipient cow sells with this pregnancy. She is a registered Angus female bred, born, and raised in the Hoover herd with a +107 \$Maternal. She is backed by six consecutive generations of Pathfinder cows down her dam's side. In our commitment to herd health, she has tested negative for Johnes's annually, through yearly routine whole-herd testing. Reg #18873770



Hoover Homestead A6 – Full Brother to Lot 5



Ellingson Homestead 6030 – Sire of Lot 5

Success with Hoover Genetics



Erica of Ellston T220

Erica of Ellston T220

Erica of Ellston T220 has gone on to be a highly successful donor cow for her owners. Purchased from Hoover Angus as a 9 month-old calf, she has already sold hundreds of thousands of dollars worth of progeny, embryos, and pregnancies. Her first son to land in a bull stud, BA 7Oaks Bold Ruler, has semen now available through Alta Genetics.

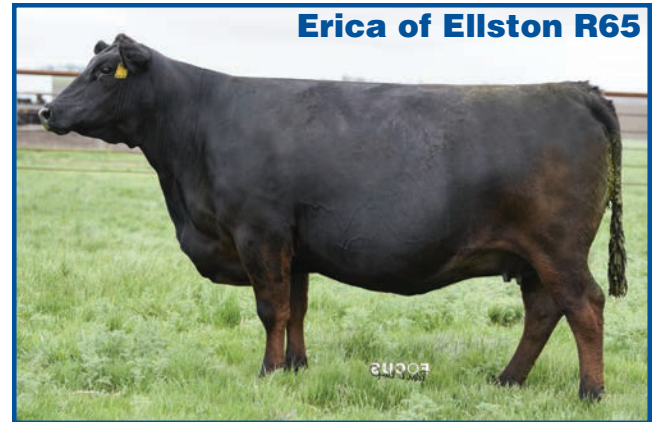
T220 owner Jason & Jess Schroeder of 7 Oaks Angus, "T220 has been a blessing to us. She is truly a once-in-a-lifetime cow that has stamped her progeny in our herd. She will be a base in our genetics for generations to come."

T220 owner Justin Mitchell of 2S Angus, "T220 has continued her charge putting amazing progeny on the ground again here in 2022. Stamping out calves that have powerful phenotype, solid feet, easy fleshing ability that shed and excel on native and fescue grass, while still excelling in efficiency and carcass traits. With several of her daughters now in production, we are seeing fantastic udder quality and maternal instinct as well. One standout daughter that performed unbelievably is becoming a cornerstone of 2S Angus."

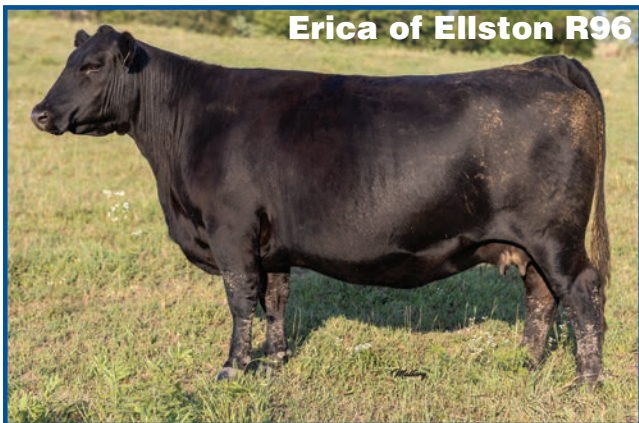
Erica of Ellston R65

Erica of Ellston R65 was the 2nd top-selling bred heifer in our 2018 auction, and she serves as a working donor for Moon Creek Farms and Hansine Ranch Partnership. R65 records a stunning 3-126 WR with below average birth ratios! If still in the Hoover herd, R65 would be the #1 indexing cow in our herd.

The top-selling female at \$22,000 in the August 2022 Moon Creek sale was a direct daughter of R65! In their 2021 sale, R65 produced the top-selling pregnancy. Korey Krull of Moon Creek reports of R65, "Her best attribute is her udder quality, teat size and placement, along with her perfect feet and legs."



Erica of Ellston R65



Erica of Ellston R96

Erica of Ellston R96

Erica of Ellston R96 was the top-selling female of our 2018 auction, and what a factory she has become! Recording 4-114 WR, she easily earned Pathfinder honors. R96's five daughters have averaged \$19,000 and her 7 sons \$11,150 to gross \$172,750.

Sue Kenny of Kenny Angus states, "We purchased a flush from a top Hoover proven donor, R96. We received a conventional flush of 5 embryos and weaned 5 live calves. Four stout bulls weaned off at an average of 740 pounds and one gorgeous heifer weighed 660 pounds and is headed to the donor pen despite an offer we had to purchase her! A very reasonable investment for a substantial return!"

Erica of Ellston Z37

Moon Creek Farms and Hansine Ranch Partnership purchased the "Pick of the Ericas" in our online sale last October. Nine months later, the top-selling embryos in their sale were out of this female! Z37 has become a preeminent donor in Moon Creek's superior donor line-up, and we'll see more from her in the future.



Erica of Ellston Z37



Queen of Ellston C50

Queen of Ellston C50

Justin Mitchell of 2S Angus purchased embryos from Queen of Ellston C50 and Erica of Ellston P44 in our first mini online fall sale. Justin states, "Our purchases of C50 and P44 embryos a few years back proved to be a solid investment as we had about a 90% conception rate. The cattle are doing well on fescue and are now getting ready to have their first calves, with one of the P44's daughters in the donor pen. She provided 8 good embryos as a virgin on one IVF flush."