

HOOVER Angus 2021

Semen & Herd Sire Directory

Hoover No Doubt



Hoover Know How



Baldrige Chairman



Mogck Entice



Hoover Notary



Hoover Counselor N29



Baldrige 38 Special



Hoover Special Edition 3A54



Frey's Cowboy Logic



Andrew & Landi McFarland-Livingston

Ellston, IA • landi@hooverangus.com
641-344-7684

John Kiburz

1044 255th Ave.
Tingley, IA 50863
641-344-3990

David & Joy McFarland

1318 250th Ave.
Tingley, IA 50863
641-344-3234

www.hooverangus.com
www.facebook.com/HooverAngusFarm

A supplement to the February 2, 2021 Hoover Angus sale book and the January 2021 *Angus Journal*. EPDs current as of 11-27-20.

MOGCK ENTICE



Calved 1-31-17 2577

18952921

[AMF, CAF, D2F, DDF, M1F, NHF, OHF, OSF, RDF]

CED	BW	WW	YW	SC	DOC	HP	CEM	MILK	MB	RE	FAT
+6	+2.2	+75	+137	+2.59	+29	+7.1	+3	+26	+81	+80	-.024
		10%	4%	1%	5%				20%	15%	10%

\$M
+57
\$F
+116 3%
\$B
+181 3%
\$C
+292 3%

SydGen Exceed 3223
SYDGEN ENHANCE
 SydGen Rita 2618

 Mogck Sure Shot 253
MOGCK ERICA 2255 #
 MOGCK Erica 2162

SydGen Googol
 SydGen Forever Lady 1255
 SydGen Liberty GA 8627 #
 Fox Run Rita 9308 #
 MOGCK Sure Shot #
 Mogck Miss 61
 Connealy 5050 611B
 MOGCK Erica 08

SEMEN \$25 CERTIFICATES \$40

- ★ Boasting a high \$C, this young sire not only nails it on paper, but stamps his high growth progeny with excellent thickness, added length of body, style, and a commanding presence! When we were taking hip height and scrotal measurements last spring on our bulls, we noticed there were bulls that would "fill the chute" width-wise. Almost every single time we noticed this, the bull was sired by Entice. Possibly the best thing about Entice progeny is their outstanding dispositions. The Hoover family is as excited about this bull as any bull they have purchased in the past 10+ years!
- ★ In August 2019, we weaned our first 70 Entice calves, and they have been impressive since birth! Visitors to the farm during the summer picked Entice calves as the best sire group. Twenty-six yearling Entice sons in our 2020 auction averaged \$8546, nearly \$2400 over the entire bull sale average! The first bred heifer daughters of Entice sell in our February 2, 2021 sale, and they are a stunning sire group!
- ★ In our spring 2020 calf crop, an Entice heifer weaning at 800 pounds was the #1 adjusted weaning weight heifer of the crop as well as two of the top five weaning weight bull calves.
- ★ The #1 adjusted weaning weight bull AND heifer of our spring 2019 crop were both sired by Entice. Six of the top 8 adjusted weaning weight bull calves were sired by Entice. Progeny have scanned well too, with over 100 progeny at 102 IMF ratio and 101 ribeye ratio. In our fall 2019 crop, the #1 IMF heifer was sired by Entice, and the #1 ribeye bull was an Entice.
- ★ Entice offers a correct skeleton and exceptional phenotypic presence in a mid-6 frame. He is wide based, super long, big ribbed, square hipped, tight sheathed, and has abundant thickness. He has a very nice disposition and is great to work with. Entice exhibits superior foot shape, and we see this in his first set of progeny too – we expect Entice to be a breed improver for foot shape. You can improve testicle size in one generation using Entice. Entice is an excellent pen breeder and a high libido bull.
- ★ Entice was the \$42,000 top-selling bull in the 2018 Mogck & Sons



Erica of Ellston V88
 Entice Daughter
 Sells February 2, 2021



Fantasia of Ellston V252
 Entice Daughter
 Sells February 2, 2021



Hoover Mahomes
 \$15,500 Entice Son



Hoover Entice V125
 \$20,000 Entice Son



Hoover Entice X8
 Entice Son
 Sells February 2, 2021



Hoover Entice V40
 \$10,000 Entice Son



Hoover Entice X195
 Entice Son
 Sells February 2, 2021



Hoover Entice V22
 \$6000 Entice Son

sale. Entice's dam has a 359 day calving interval on her four calves and records 4-108 WR, 3-104 YR, 3-107 IMF ratio, 3-103 ribeye ratio, 3-86 rib fat ratio, and 3-88 rump fat ratio. She produced a full brother to Entice selling for \$11,000, and her four sons have averaged an 814 pound weaning weight!



Miss Blackcap Ellston V449
 Entice Daughter

- ★ Entice had a very solid set of performance data: BW 77 lbs., WW 886 lbs., WR 116 among 216 contemporaries, YW 1544 lbs., YR 114, IMF 4.94, ratio 118, ribeye 17.0", ratio 114.
- ★ Sire Enhance has been a high-volume semen producer at ORigen, and was the #1 bull in the breed for registrations in 2020.
- ★ Owned with Mogck & Sons Angus, Olivet, SD; TK Angus, Wood Lake, NE; and Select Sires, Plain City, OH.

For more photos and detailed information on Hoover herd sires, visit
www.hooverangus.com/herdsires.html

HOOVER VICTORIOUS



Calved
1-13-19

V25

19496271

CED	BW	WW	YW	SC	DOC	HP	CEM	MILK	MB	RE	FAT
+10	+1.1	+87	+149	+78	+36	+14.5	+10	+27	+1.01	+56	+0.36
20%		1%	1%		1%	15%			10%		

- ★ Victorious was the lead-off, \$45,000 top-selling bull in our 2020 sale. He is a long bodied, thick, good quartered, wide based bull with more frame and a big scrotal. He is a massive bull that is big topped. His exceptional Docility EPD is very telling of his superior disposition!
- ★ Victorious was the 5th top weaning weight bull of his crop, and better yet, he started out at a light 70 pounds! He has been used

\$M	
+89	1%
\$F	
+110	3%
\$B	
+176	3%
\$C	
+317	1%

SydGen Enhance
MOGCK ENTICE
MOGCK Erica 2255 #

Basin Excitement #
PRINCESS OF ELLSTON N170
Princess of Ellston L196

SydGen Exceed 3223
SydGen Rita 2618
Mogck Sure Shot 253
MOGCK Erica 2162
Basin Expedition R156
Basin Lady S532 AK
Connealy Reward #
Princess of Ellston J42 #

SEMEN \$35 CERTIFICATES \$45

on both heifers and cows at Hoover Angus. Indicative of his multi-trait excellence, Victorious fares well for \$M, \$B, and \$C.

- ★ Dam N170 is sure a light birth weight cow whose calves get right up and grow quickly. She records 5-93 BWR, 5-104 WR, and 3-105 YR. N170 is a strong carcass cow with 3-128 IMF ratio and 3-103 ribeye ratio!
- ★ Pathfinder great grandam J42 is an excellent cow with a picture-perfect udder. She is one of the most beautiful cows in the herd! Three sons averaged \$7425. She has a 360 day calving interval
- ★ The first three cows "off the pedigree" on Victorious' dam's side have all earned Pathfinder status, making it four *consecutive* generations of Pathfinders starting with J42! An incredibly rare find!
- ★ Owned with Grimmus Cattle Co., Oakdale, CA.

HOOVER NO DOUBT



Calved
1-29-14

N68

17882682

[AMF, CAF, D2F,
DDF, M1F, NHF,
OHF, OSF, R0F]

CED	BW	WW	YW	SC	DOC	HP	CEM	MILK	MB	RE	FAT
-5	+4.5	+78	+145	+1.95	+33	+9.5	+11	+18	+87	+93	+0.35
		4%	2%	3%	2%		25%		15%	10%	

\$M	
+43	
\$F	
+127	1%
\$B	
+192	1%
\$C	
+292	3%

MOGCK Sure Shot #
MOGCK BULLSEYE #
Mogck Mary 1255

SydGen C C & 7 #
MISS BLACKCAP ELLSTON J2
Miss Blackcap Ellston D154 #

Mytty In Focus #
Mogck Black Lass 2065
K C F Bennett Coalition SCC #
Mogck Mary C 1757
S A F Connection #
SydGen Forever Lady 4087
TC Gridiron 258 #
Miss Blackcap Ellston A269

SEMEN \$100 CERTIFICATES \$33

- ★ Hoover No Doubt was the \$67,500 top-selling bull in our 2015 auction, and became the top-selling bull in our 93-year history at Hoover Angus!
- ★ No Doubt's progeny have met the market's demands for width of base, superior feet, and sound skeletons with real-life true performance that is not just genomic-based. No Doubt consistently transmits style and eye appeal with an uncommon amount of meat and muscle. Progeny have topped sales in all corners of the country! Three of the top 5 selling bulls in our 2019 sale, all over \$25,000, were sired by No Doubt.
- ★ With several calf crops now weaned, we can honestly say his calves easily rise to the top. A No Doubt son was the #1 adjusted weaning weight bull calf among 160 herd mates of the 2017 Hoover crop and the #1 adjusted weaning weight bull in our 2018 crop! Our 2020 crop is our best crop of No Doubts yet!
- ★ Daughters in production offer a notch more frame and superior udder



Hoover No Doubt S34
\$27,500 No Doubt Son



Blueblood Lady Ellston T74
\$12,500 No Doubt Daughter



Hoover Longevity T40
\$26,000 No Doubt Son



Miss Blackcap Ellston R199
Four year-old No Doubt Daughter

shape, attachment, and teat size. They are calm females to work with and over 100 daughters average a 100 WR on their progeny.

- ★ Donor dam J2 was the lead-off, \$20,000 top-selling open heifer from our 2011 auction selling to KDS Angus. Now owned by Bullseye Angus, 7 Oaks Angus, Reverse Rocking R Ranch, and GMC Genetics, J2 hit her financial stride eight years of age, generating nearly a quarter million dollars of revenue in a 12 month period for her new owners!
- ★ When we sold J2, we retained one flush from this female, and had five live calves born in 2014. Only one was a bull, No Doubt. He and his four flush sisters averaged a 108 WR in proper contemporary groups, all with registered recipients. The 4 sisters had an average 774 pound weaning weight. The top one at 850 pounds was the #1 weaning weight female of the entire heifer crop (ET and non-ET)! Even more amazing is that she was raised by a 12 year-old recip!
- ★ J2 is a 10th generation Hoover Angus bred, born, and raised Blackcap Ellston female.
- ★ Owned with Alta Genetics, Rocky View County, AB and Spruce Mountain Ranch, Larkspur, CO.

HOOVER KNOW HOW

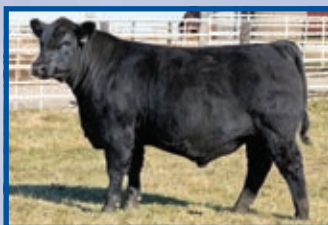


Calved
1-27-16

R67

18543644

[AMF, CAF, D2F,
DDF, M1F, NHF,
OHF, OSF, RDF]



Hoover Know How X7
Know How Son
Sells February 2, 2021



Hoover Know How V81
\$7500 Know How Son

CED	BW	WW	YW	SC	DOC	HP	CEM	MILK	MB	RE	FAT
-1	+3.1	+63	+131	+2.08	+18	+13.3	+11	+20	+78	+1.02	+0.02
		30%	10%	2%		20%	25%		20%	3%	

\$M
+43
\$F
+129 1%
\$B
+193 1%
\$C
+293 3%

Mogck Bullseye #
HOOVER NO DOUBT
Miss Blackcap Ellston J2

SydGen Storm 8504
BLKCP EMPRESS ELLSTON L265 #
Blkcp Empress Ellston J120

MOGCK Sure Shot #
Mogck Mary 1255
SydGen C C & 7 #
Miss Blackcap Ellston D154 #
SydGen Contact #
G A R 616 Rito 2472
Basin Excitement #
Blackcap Empress Ellston F29

SEMEN \$30 CERTIFICATES \$40

- ★ Know How is a super stout, thick, moderate sized, great footed, big testicle bull that has the look of his father, No Doubt. From one of the longest standing, most successful cow families in the 93-year history of Hoover Angus, this bull brings a special pedigree to the breed.
- ★ The first Know How calves at Hoover Angus were born in the spring

of 2019, and at a couple months of age, we knew these calves would be special. They are sharp-looking calves with a strong hip, powerful hind leg, sound structure, and excellent thickness. They have the power and growth one would expect from a No Doubt line.

- ★ Pathfinder dam L265 is an exceptional uddered female and very calm in her demeanor. She is a low birth weight cow that records 5-98 BWR and 5-103 WR. L265 has one Pathfinder daughter that works in the herd. L265 and the 6 generations of cows behind her have been superior uddered females. If you need to improve udder attachment, shape, and teat size, consider Know How.
- ★ L265 is an 11th generation Blackcap Empress Ellston female to be bred, born, and raised at Hoover Angus. This has been a tremendously successful cow family through many generations. Fifth generation dam C57 has given rise to a phenomenal cow family. Eighty-four daughter descendants have stemmed from C57, including 17 Pathfinders and 8 donor cows! Four bulls selected for use in the Hoover herd have also stemmed from C57. To say C57 has had an impact on the herd would be an understatement! She has truly helped write the history books at Hoover Angus.
- ★ Owned with Teixeira Cattle Co., Pismo Beach, CA and Select Sires, Plain City, OH.

HOOVER NOTARY



Calved
8-18-17

S427

19125912

[AMF, CAF, D2F,
DDF, M1F, NHF,
OHF, OSF, RDF]



Hoover Notary X20
Notary Son
Sells February 2, 2021



Prim Lassie of Ellston V435
Full Sister to Notary

CED	BW	WW	YW	SC	DOC	HP	CEM	MILK	MB	RE	FAT
+4	+2.5	+75	+125	+2.18	+29	+15.1	+10	+25	+71	+8.7	+0.09
		10%	15%	1%	5%	10%			25%	10%	

\$M
+80 4%
\$F
+114 4%
\$B
+173 5%
\$C
+304 2%

Mogck Bullseye #
HOOVER NO DOUBT
Miss Blackcap Ellston J2

Basin Excitement #
PRIM LASSIE ELLSTON L455
Prim Lassie Ellston H491

MOGCK Sure Shot #
Mogck Mary 1255
SydGen C C & 7 #
Miss Blackcap Ellston D154 #
Basin Expedition R156
Basin Lady S532 AK
TC Friction 5130 #
Prim Lassie Ellston B501 #

SEMEN \$25 CERTIFICATES \$40

- ★ The stud of our 2019 sale, Notary was the top-selling bull at \$38,000! Notary is a really thick, wide based, correct made, nice profiling, big scrotal, good footed bull. He is a proud bull that exemplifies the traits found in No Doubt.
- ★ We are excited about our first crop of Notary calves – they have come easily with middle-of-the-road birth weights. They have added frame and length for no more birth weight than what they exhibit. The Notary calves are growing well, and we have had numerous reports

from breeders that have used Notary and are extremely pleased their first set of calves. If you are looking for a No Doubt son to use AI, we believe Notary is worthy of your consideration!

- ★ This high growth bull really offers a rare combination of traits – he combines the high end product merit traits with a large scrotal – traits that are often antagonistic to one another. He is one of the top bulls of the breed for his superior combination of high \$M and high \$B.
- ★ Tired of Angus bulls not passing a semen test at a year of age because of small scrotal development? Look for Notary to improve this – his Scrotal EPD is above the best 1% of the breed!
- ★ Dam L455 is a beautiful uddered female with a 354 day calving interval. She has the 8th highest \$Maternal Value of any cow in production at Hoover Angus at +95, well above the best 1% of current dams! L455's 2019 daughter, a full sister to Notary, is a beautiful heifer and one of the very top heifers of her crop!
- ★ Grandam H491 is also a good uddered cow with a 365 day calving interval. H491 ties as the 5th top ribeye ratio cow in the herd!
- ★ Great grandam B501 was a Pathfinder, had a Pathfinder sister, and her grandmother was a Pathfinder!
- ★ High quality semen is available on Notary. Notary saw significant usage at Hoover Angus in 2019 and 2020.
- ★ Owned with IMS Cattle, Gibson City, IL; Tim Hackett Farms, Canton, IL; and Golden Chute Ranch, Walker, IA.

BALDRIDGE 38 SPECIAL



Calved 1-13-15 C040 18229487											
CED	BW	WW	YW	SC	DOC	HP	CEM	MILK	MB	RE	FAT
+7	+2	+76	+129	+1.26	+14	+7.2	+8	+17	+1.20	+33	+0.50
	30%	10%	10%	20%					3%		

\$M
+58
\$F
+74
\$B
+145 25%
\$C
+246 25%

EF Complement 8088 #
EF COMMANDO 1366
 Riverbend Young Lucy W1470
 Styles Upgrade J59 #
BALDRIDGE ISABEL Y69
 Baldridge Isabel T935

Basin Franchise P142 #
 EF Everelda Entense 6117
 B/R Ambush 28 #
 Riverbend Young Lucy T1080
 Sitz Upward 307R #
 Plainview Lassie 71B
 Baldridge Kaboom K243 KCF #
 Baldridge Isabel P4527

SEMEN \$30 CERTIFICATES \$33

- 38 Special sons have been crowd favorites in the past three Hoover Angus sales. Seventy-four sons have averaged \$7917! Our largest, most impressive offering of 38 Special progeny will sell in our February 2, 2021 sale.
- 38 Special is the marbling king at Hoover Angus with frame, performance, and eye appeal! 38 Special now has over 500 progeny in 55 herds with a whopping 110 IMF ratio and 100 ribeye ratio!
- In the spring 2020 calf crop at Hoover Angus (quite possibly our best crop of 38 Specials yet), it was 38 Special sons taking top honors for adjusted weaning weight in both the ET and non-ET crop at 868 and 865 pounds!
- In 38 Special's first calf crop, a heifer calf was the #1 adjusted weaning weight heifer of the crop at 872 pounds, which is the



Miss Blackcap Ellston V179
 38 Special Daughter
 Sells February 2, 2021



Erica of Ellston X52
 38 Special Daughter
 Sells February 2, 2021



Erica of Ellston X39
 38 Special Daughter
 Sells February 2, 2021



Hoover Decree
 \$14,000 38 Special Son

heaviest adjusted weaning weight of any female in Hoover history! 38 Special calves have added frame and muscle. Many heifers have calved successfully to 38 Special, and we do recommend him as a safe choice for use on heifers.

- 38 Special daughters have just weaned their second calves, and we can definitely say 38 Special can improve udders! Daughters have superior udder attachment and a small teat size. Uniformity in the udders of 38 Special daughters is exceptional! Two 38 Special daughters tie as the 4th top indexing cows of the Hoover herd. Eighty-seven daughters in 26 herds have an average 100 wean ratio on their progeny.
- 38 Special was our pick of the bulls in the record 2016 Baldridge Bros. Sale, where 38 Special and his 6 flush brothers averaged \$58,928. 38 Special was the 3rd top-selling bull of the event at \$100,000.
- 38 Special was definitely the power, high performance bull of his flush! He is siring cattle very similarly. Dam Y69 is the most influential cow in Baldridge Bros. history and as her sons are being used heavily across the breed, Y69 will be remembered as one of the breed's great ones! She is one of the top income-producing cows in the history of the breed.
- Owned with Alta Genetics, Rocky View County, AB and Baldridge Bros., North Platte, NE.

HOOVER SPECIAL EDITION S454



Calved
8-23-17

S454

19125070

[AMF, CAF, D2F, DDF, M1F, NHF, OHF, OSF, RDF]

\$M
+65 25%
\$F
+90
\$B
+146 25%
\$C
+254 20%

EF Commando 1366
BALDRIDGE 38 SPECIAL
 Baldridge Isabel Y69
 Connealy Direct Deposit #
EDELLA OF ELLSTON N473 #
 Edella of Ellston K264

EF Complement 8088 #
 Riverbend Young Lucy W1470
 Styles Upgrade J59 #
 Baldridge Isabel T935
 Connealy Danny 5398
 Boka Rae of Conanga 168
 Basin Excitement #
 Edella of Ellston H232 #

SEMEN \$25 CERTIFICATES \$40

CED	BW	WW	YW	SC	DOC	HP	CEM	MILK	MB	RE	FAT
+4	+1.3	+87	+146	+1.11	+29	+6.8	+4	+28	+76	+64	+0.28
		1%	2%	30%	5%			30%	20%		

- Special Edition was the 4th top weaning weight bull of his crop at 925 pounds! He is a smooth, good looking bull with a tight sheath and excellent feet. He has an amazing amount of style and a correct skeleton for a bull that pushes the upper limits for growth.
- Special Edition's first calves are weaned, and we are impressed

by their outstanding growth and eye appeal. Even with a relatively small sampling of calves, a Special Edition daughter was the 4th top weaning weight heifer of our spring 2020 crop, and a son was among the top 15! Reports from other states on Special Edition calves send similar reports.

- ★ Pathfinder dam N473 serves as the 10th top indexing cow of our entire herd! She has a 360 day calving interval and 4-110 WR. Her four sons have averaged an 856 pound weaning weight! A full brother to Special Edition that was the #1 IMF scanning bull of his crop sells in our February 2, 2021 production sale.
- ★ Special Edition is backed by six consecutive generations of high ratioing, highly productive females with superior udder quality.
- ★ High quality semen is available through Hoover Angus.

FREYS COWBOY LOGIC



Calved 1-27-18 181F 19256275											
CED	BW	WW	YW	SC	DOC	HP	CEM	MILK	MB	RE	FAT
+17	-.4	+68	+128	+.51	+15	+10.9	+17	+20	+.20	+.45	-.031
1%	20%	20%	10%				1%				10%

\$M
+50
\$F
+85
\$B
+118
\$C
+203

HA Outside 3008
HA COWBOY UP 5405
 HA Blackcap Lady 1602 #
 WK Bobcat #
F A R PRINCESS 148Z
 F A R Princess 214X #

KG Solution 0018 #
 HA Ever Lady 1575 #
 Sitz Upward 307R #
 HA Blackcap Lady 5515
 Connealy Right Answer 746 #
 WK Miss Angus 7127 #
 Sitz Upward 307R #
 F A R Princess 202T

SEMEN \$25 CERTIFICATES \$40

- ★ The first calves of Cowboy Logic were born in the spring of 2020, and we can confirm he is a true calving ease bull that can be safely used on heifers! His calves out of heifers are low birth weight and often short gestation. Bred heifers in our 2020 sale were also sold bred to Cowboy Logic, and reports from these heifers calving has been very similar to what we have seen! Fall 2020-born calves by Cowboy Logic are an exciting group and phenotypically come to the top of the crop!
- ★ Now that his first calves are weaned, these cattle are above average phenotype cattle with sound structure and nice growth. His first sons and daughters at Hoover Angus will sell in our February 2, 2021 production sale. Many bred heifers will carry his service.



Hoover Cowboy Logic X22
 Cowboy Logic Son
 Sells February 2, 2021



Hoover Cowboy Logic X193
 Cowboy Logic Son
 Sells February 2, 2021



Miss Empress Ellston X96
 Cowboy Logic Daughter
 Sells February 2, 2021



Blackcap Empress Ellston X86
 Cowboy Logic Daughter
 Sells February 2, 2021

- ★ As the 2019 lead-off bull in the Frey carload of bulls in Denver, Cowboy Logic drew lots of attention in the yards! He has style, muscle, power and tremendous performance in a calving ease package. Born at 75 pounds, he had a 781 pound weaning weight, YW 1647 lbs., ADG 5.41 lbs/day, WDA 4.32 lbs/day, IMF 4.61, ribeye 14.1."
- ★ His dam records a 368 day calving interval and 6-97 BWR, 5-105 WR, 4-113 YR, 4-104 IMF ratio and 4-102 ribeye ratio. Lynn Frey reports this about Cowboy Logic's dam, "She is the kind of cow that we would like to have more of. She covers all the bases and produces individuals that are complete and attractive in their makeup when mated to various bulls."
- ★ Cowboy Logic's grandam serves as a donor cow and produced Freys Opportunity 148A.
- ★ Cowboy Logic saw significant usage at Hoover Angus the past two seasons. He was purchased with Select Sires for \$70,000.
- ★ Australian visitors who viewed Cowboy Logic breeding heifers were impressed with the bull's structure and were especially complimentary of the angle of his pasterns. Cowboy Logic held his condition very well servicing heifers as a yearling bull.
- ★ Owned with Frey Angus Ranch, Granville, ND and Select Sires, Plain City, OH.

SYDGEN NEXTGEN



Calved 8-24-17

7579

19154965

[AMF, CAF, D2F, DDF, M1F, NHF, OHF, OSF, RDF]

\$M
+44
\$F
+117 3%
\$B
+185 2%
\$C
+284 5%

Connealy Consensus 7229 #
V A R GENERATION 2100
 Sandpoint Blackbird 8809
 SydGen FATE 2800 #
SYDGEN RITA 4387
 EXAR Rita 1885

Connealy Consensus #
 Blue Lilly of Conanga 16
 Connealy Onward #
 Riverbend Blackbird 4301
 SydGen Trust 6228 #
 SydGen Heroine 9808
 Hoover Dam #
 Riverbend Rita S136

SEMEN \$20 CERTIFICATES \$40

CED	BW	WW	YW	SC	DOC	HP	CEM	MILK	MB	RE	FAT
+11	-.4	+65	+114	+1.33	+22	+8.2	+13	+14	+.91	+.87	+.007
15%	20%	25%	25%	20%	25%		10%		15%	10%	

- ★ NextGen was our selection from the 2018 Sydenstricker sale. He met our approval for phenotype and EPDs, and upon inspection of his dam, we were impressed with his dam's confirmation, udder structure, and nice disposition.
- ★ Heifers will sell bred to NextGen in our February 2, 2021 sale.

- ★ NextGen had an actual birth weight of 55 pounds, weaned at 788 pounds, WR 107, YW 1458 lbs., YR 104, and gained 4.19 pounds per day on test. He posted a 37.61 adjusted scrotal, and had a 52" hip height. He scanned a 4.42 IMF, ratio 104, and a large 16.2" ribeye. We believe his best trait is his excellent disposition!
- ★ NextGen's dam is a model Angus cow and working donor. She is a maternal sister to SydGen Express 3487B. SydGen Express sired the \$94,000 top-selling female in the 2018 SydGen Sale! The 4387 cow now has two progeny that have topped the \$10,000 mark. She was the Lot 5 featured cow in the November 2018 SydGen Sale, where she sold for \$20,000. Grandam has sold progeny for \$8500, \$7000, \$6500, and \$5250.
- ★ Owned with Sydenstricker Genetics, Mexico, MO.

BALDRIDGE CHAIRMAN



Calved
1-17-16

D073

18587751

[AMF, CAF, D2F,
DDF, M1F, NHF,
OHF, OSF, RDF]

CED	BW	WW	YW	SC	DOC	HP	CEM	MILK	MB	RE	FAT
+12	-1.1	+67	+121	+90	+17	+9.7	+17	+25	+67	+78	+019
10%	10%	20%	20%				1%		30%	15%	

\$M	
+65	25%
\$F	
+91	30%
\$B	
+146	25%
\$C	
+254	20%

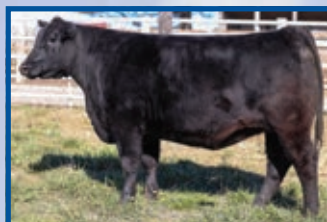
Connealy Confidence 0100 #
FORTUNES CONQUEST 224
Fortunes 4412 Ethelda 742

G A R Prophet #
BALDRIDGE ISABEL B061
Baldrige Isabel Y69

Connealy Tobin
Becka Gala of Conanga 8281
S A V 004 Traveler 4412
Fortunes 112 Ethelda 423
C R A Bextor 872 5205 608 #
G A R Objective 1885
Styles Upgrade J59 #
Baldrige Isabel T935

SEMEN \$25 CERTIFICATES \$33

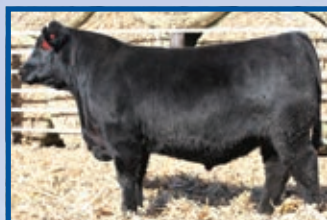
- ★ We are extremely impressed with Chairman progeny! They are growthy cattle with more look and style than most – especially for the ultimate calving ease package he presents! Chairman has been used successfully on both cows and heifers at Hoover Angus, and we will see his largest calf crop be born in the spring of 2021. Look for a very stout offering of Chairman progeny in our February 2, 2021 sale.
- ★ We calved out Chairman's first daughters in 2020, and they are neat uddered, deep ribbed and broody females. His first daughters have an average 103 wean ratio on their progeny! Chairman daughters are a stunning sire group in our bred heifers!
- ★ Chairman is a deep bodied, massive type bull selected for \$55,000 from the 2017 Baldrige Bros. sale. Chairman was definitely a



Gammer of Ellston V178
Chairman Daughter
Sells February 2, 2021



Gammer of Ellston V225
Chairman Daughter
Sells February 2, 2021



Hoover Chairman T213
\$9000 Chairman Son



Hoover Chairman V408
Chairman Son
Sells February 2, 2021

favorite of Jud's in their sale, as he earned a painted picture in the Taft Building. Chairman was the #1 yearling weight bull of the auction! He is a loose-skinned, stylish bull that offers a tick more moderate frame than most Hoover cattle.

- ★ Chairman's dam is a full sister to the \$90,000 valued Baldrige Beast Mode at Genex. B061 records 3-108 WR, 15-106 IMF ratio and 15-105 ribeye ratio. She is the highest grossing daughter of the great Y69 cow. Y69 is the dam of 38 Special and the 2017 Baldrige sale topper, Baldrige Colonel at \$580,000. Y69 has become one of the most influential cows of the entire Angus breed!
- ★ Sire Conquest has been used successfully on over 1500 head of commercial first calf heifers in South Dakota. Conquest is long, thick, and sound with extra muscle and capacity.
- ★ Owned with Alta Genetics, Rocky View County, AB and Baldrige Bros., North Platte, NE.

HOOVER 38 SPECIAL S4



Calved
12-31-16

S4

18861925

[AMF, CAF, D2F,
DDF, M1F, NHF,
OHF, OSF, RDF]

CED	BW	WW	YW	SC	DOC	HP	CEM	MILK	MB	RE	FAT
+5	-7	+77	+134	+1.65	+33	+8.5	+0	+21	+82	+58	+033
	15%	5%	10%	10%	2%				20%		

\$M	
+66	25%
\$F	
+85	
\$B	
+143	30%
\$C	
+251	25%

EF Commando 1366
BALDRIDGE 38 SPECIAL
Baldrige Isabel Y69

Hoover Dam #
BLUEBLOOD LADY ELLSTON M3
Blueblood Lady Ellston H118 #

EF Complement 8088 #
Riverbend Young Lucy W1470
Styles Upgrade J59 #
Baldrige Isabel T935
SydGen C C & 7 #
Erica of Ellston C124 #
TC Friction 5130 #
Blueblood Lady Ellston B305 #

SEMEN \$20 CERTIFICATES \$40

his frame than most 38 Special progeny.

- ★ When you think of an Angus momma cow, and what she should do, that is exactly what dam M3 does. She is a superior uddered, good disposition, solid phenotype cow that raises a whale of a calf every year, starting with a moderate birth weight. She became a donor due to her superior production, fertility, feet, and udder.
- ★ M3 is a 17th generation bred, born, and raised Hoover cow! Trace down the dam's line on M3's pedigree, and five of the past six generations of dams have earned Pathfinder honors! With the history of fertility, longevity, superior udders, and good disposition found in this pedigree, I highly recommend saving daughters from S4.
- ★ S4's first calves arrived in the spring of 2019, and there are definitely some standouts. One of the best heifer calves of the crop is an S4 daughter.
- ★ Owned with Eagle Hill Farms, Lucas, IA.

HOOVER TOP NOTCH P409



Calved
8-09-15

P409

18470330

[AMF, CAF, D2F,
DDF, M1F, NHF,
OHF, OSF, RDF]



Hoover Top Notch T90
Hoover Angus Herd Sire



Hoover Top Flight
\$6000 Top Notch Son

CED	BW	WW	YW	SC	DOC	HP	CEM	MILK	MB	RE	FAT
+8	+3	+75	+130	+.29	+21	+14.7	+7	+32	+.51	+1.10	-.030
	30%	10%	10%		30%	10%		15%		2%	10%

\$M	\$F	\$B	\$C
+69	20%	+110	10%
+165	10%		
+283	5%		

Bruns UpperCut 610
BRUNS TOP CUT 373
Dakota Miss 669 Baf #

Connealy Counselor #
ERICA OF ELLSTON L5
Erica of Ellston G366 #

Sitz Upward 307R #
Dakota Ann 565 BAF
Mohren Brushpopper 295 #
Dakota Miss 1785 Baf #
Connealy Mentor 7374 #
Jaze of Conanga 234
SydGen C C & 7 #
Erica of Ellston D184

SEMEN \$25 CERTIFICATES \$40

- ★ Top Notch was the \$33,000 top-selling bull in our 2017 auction. He came to auction with a phenomenal set of credentials, and a phenotype to match. Top Notch will add some guts & girth to his daughters – save every one he makes!
- ★ Top Notch is a flush brother to Hoover Cut Above P427 (see below). This set of 5 flush brothers averaged \$23,800! Top Notch

was noted by many as the neatest phenotype bull of the flush. Please read about donor dam L5 in Cut Above's footnote. L5 is a full brother to the \$39,000 Hoover Counselor N29 (page 8).

- ★ Top Notch's first calves were weaned in the fall of 2018, and the 2nd top weaning weight bull of the Hoover crop was sired by him! A Top Notch heifer calf of this crop was the 7th top weaning weight heifer calf of the crop. From only 9 calves sired by Top Notch in this crop, they did extremely well and were one of the top ratioing sire groups. We are very pleased with the phenotype of these calves.
- ★ The potent transmitting ability of the females from this Erica cow family has been phenomenal. Pathfinder donor grandam G366, her daughters and granddaughters have built a legacy at Hoover Angus! The four herd sires on pages 7-8 of this book all trace to G366, and Hoover Dam also stems from the Ericas!
- ★ In the Hoover cow herd, 5 of the top 10 indexing cows are G366 daughters or granddaughters, including the #1 and #2 cows! Three daughters of G366 have earned Pathfinder honors. Three years in a row, G366 herself weaned the #1 adjusted weaning weight bull or heifer calf of the crop. G366 daughters produced the two lead-off bred heifers in our 2018 auction, selling for \$48,000 and \$22,000!
- ★ Owned with Select Sires, Plain City, OH; Baldrige Bros., North Platte, NE; and Ray Sikes, Pritchett, CO.

HOOVER CUT ABOVE P427



Calved
8-17-15

P427

18470294

[AMF, CAF, DDF, M1F,
NHF, OHF, OSF]



Blackbird of Ellston T162
\$5000 Cut Above Daughter



Queen of Ellston T171
\$4500 Cut Above Daughter

CED	BW	WW	YW	SC	DOC	HP	CEM	MILK	MB	RE	FAT
+12	-2.0	+50	+97	+.97	+19	+15.4	+12	+38	+.72	+1.07	-.024
10%	4%					10%	15%	2%	25%	2%	10%

\$M	\$F	\$B	\$C
+52		+88	20%
+152			
+249	25%		

Bruns UpperCut 610
BRUNS TOP CUT 373
Dakota Miss 669 Baf #

Connealy Counselor #
ERICA OF ELLSTON L5
Erica of Ellston G366 #

Sitz Upward 307R #
Dakota Ann 565 BAF
Mohren Brushpopper 295 #
Dakota Miss 1785 Baf #
Connealy Mentor 7374 #
Jaze of Conanga 234
SydGen C C & 7 #
Erica of Ellston D184

SEMEN \$20 CERTIFICATES \$40

- ★ If you are looking for a super calving ease bull to save replacement daughters with superior udder quality and more eye appeal and fleshing ability, check out Cut Above! The older his daughters get, the more we like them – they have made exceptional young cows! Daughters are deep ribbed, broody, milky females.
- ★ Cut Above is a "true blue" calving ease bull that works well on heifers.

- ★ Cut Above was a member of the "Fab Five" the set of 5 flush brothers that averaged \$23,800! This flush led off our sale, and for good reason.
- ★ A maternal brother to Cut Above was the 2nd top selling bull of our 2016 auction at \$30,000 to Alta Genetics. This bull, Hoover Ambition, was the #1 adjusted weaning weight bull of our entire spring 2015 crop at 919 pounds. A full sister to Ambition was the 3rd top weaning weight ET heifer and #1 YW ET heifer of our 2015 crop!
- ★ Donor dam L5 is one of our favorites. L5's first daughter in production weaned the 9th top weaning weight heifer of her crop. L5 records 3-106 WR on her natural progeny and 18-105 IMF ratio and 18-102 ribeye ratio. L5 weaned an 842 pound heifer calf at Baldriges to ratio 107 in a small contemporary group of donor cows' calves!
- ★ L5 was the standout heifer of her crop – she was the #1 adjusted weaning weight, #1 adjusted yearling weight heifer at 779 lbs., WR 116, YW 1160 lbs., YR 114. She turned in a superior scan with a 7.05 IMF, ratio 119, and a 14.6" ribeye, ratio 119.
- ★ A full brother to L5 is Hoover Counselor N29, the \$39,000 sire working for Select Sires. Please read about grandam G366 on the next page under Hoover Counselor N29.
- ★ Owned with Accelerated Genetics, Plain City, OH and Hart Farms, Frederick, SD.

HOOVER COUNSELOR N29



Calved
1-08-14

N29

17879330

[AMF, CAF, D2F,
DDF, M1F, NHF,
OHF, OSF, RDF]



Erica of Ellston L5

*Dam of Top Notch
and Cut Above
Full Sister to Counselor*



Erica of Ellston G366

*Dam or grandam of Top Notch,
Cut Above, Counselor,
and Silverado*

CED	BW	WW	YW	SC	DOC	HP	CEM	MILK	MB	RE	FAT
+10	-7	+59	+111	+1.63	+23	+15.8	+6	+30	+72	+84	-0.10
25%	15%		30%	10%	20%	10%		20%	25%	15%	25%

\$M
+55
\$F
+99 20%
\$B
+159 15%
\$C
+261 15%

Connealy Mentor 7374 #
CONNEALY COUNSELOR #
Jaze of Conanga 234

SydGen C C & 7 #
ERICA OF ELLSTON G366 #
Erica of Ellston D184

G A R Retail Product #
Executa of Conanga 939 #
Connealy Lead On #
Jaycee of Conanga 233
S A F Connection #
SydGen Forever Lady 4087
Woodhill Statesman 54K-90N #
Erica of Ellston B235 #

SEMEN \$22 CERTIFICATES \$40

- ★ N29 originally sold through the 2015 Hoover sale for \$23,000 to Steve Borns as the second top-selling bull. In Steve's dispersal sale in 2017, N29 was purchased by Select Sires for \$39,000!
- ★ N29's first progeny at Hoover Angus were born in the spring of 2020, and they will be offered in our February 2, 2021 auction. They are true low birth weight cattle, and we bred more heifers to him for the 2021 season – heifer carry his service in our February sale also.
- ★ N29 is a full brother to the Erica of Ellston L5 cow that is the dam of Hoover Top Notch P409 (Select Sires), Hoover Cut Above P427 (Accelerated Genetics), and Hoover Ambition (Alta Genetics).
- ★ Pathfinder donor dam G366 is likely the best cow that has ever

- been bred, born, and raised here in our 93 year history!
- ★ G366 maintained a perfect 365 day calving interval on her 8 natural progeny, which included stealing flushes four different years prior to 2019 when we pulled her out of production to flush for one year. At 12 years of age, G366's udder was still phenomenal! She records 9-98 BWR, 9-107 WR, and 6-108 YR.
- ★ G366 has brought a total of 10 featured progeny to auction including one that was the #1 adjusted weaning weight bull of his crop, and her 16 progeny have averaged over \$12,000. Registered progeny sales plus embryo sales have totaled over \$200,000 to make her one of the top income producing cows in our history!
- ★ G366 has three Pathfinder daughters – two in the Hoover herd, and one owned by JJ Scheckel – this female was purchased as an embryo at the National Western from us. Currently in the Hoover cow herd, the #1 indexing cow is a direct G366 daughter, the Pathfinder M38 cow. The #2 indexing cow in the herd is R96, a G366 granddaughter. Tie for fourth indexing cow is a G366 granddaughter, S7. The two cows that tie for 8th top indexing cows are both G366 granddaughters. It doesn't get any better than this! G366 daughters produced the two lead-off bred heifers in our 2018 auction, selling for \$48,000 and \$22,000!
- ★ G366 is an extremely gentle cow, and this shines through in her progeny. Her Docility EPD is well above the best 1% of the breed.
- ★ G366's great grandam V65 is the lead-off bred heifer of Hoover Dam. This Erica cow family has put 9 bulls in 6 different AI studs.
- ★ Owned with Select Sires, Plain City, OH and Borns Angus, Hazel, SD.

HOOVER SILVERADO S259



Calved
2-27-17

S259

18862006



Erica of Ellston N31

*Flush Sister to the Dam of
Silverado*



Hoover Silverado V488

*Silverado Son
Sells February 2, 2021*

CED	BW	WW	YW	SC	DOC	HP	CEM	MILK	MB	RE	FAT
+0	+3.6	+84	+150	+2.57	+33	+15.5	+3	+29	+69	+65	+0.43
		2%	1%	1%	2%	10%		25%	30%	30%	

\$M
+50
\$F
+108 10%
\$B
+160 15%
\$C
+258 20%

Mogck Bullseye #
HOOVER NO DOUBT
Miss Blackcap Ellston J2

Connealy Counselor #
ERICA OF ELLSTON N9
Erica of Ellston G366 #

MOGCK Sure Shot #
Mogck Mary 1255
SydGen C C & 7 #
Miss Blackcap Ellston D154 #
Connealy Mentor 7374 #
Jaze of Conanga 234
SydGen C C & 7 #
Erica of Ellston D184

- ★ Silverado was the #1 adjusted weaning weight and #1 adjusted yearling weight bull of our 2017 crop! Silverado is a tremendously powerful growth bull with a big scrotal, level top, and super long body.

- ★ A Silverado son will likely lead-off our fall bull division in our February 2, 2021 sale. Silverado progeny have excelled for growth while maintaining a nice phenotype and structural correctness.
- ★ Dam N9 comes from the highly noted Erica of Ellston cow family that has put 9 sons in 6 different AI studs! This cow family has proven their superiority the old-fashioned way – by progeny performance, fertility, longevity, docility, and phenotype. N9 records 5-108 WR and a 356 day calving interval.
- ★ N9 is a full sister to Erica of Ellston L5, the dam of Hoover Top Notch P409 and Hoover Cut Above P427, found on page 7 of this sire directory.
- ★ Please take time to read about Pathfinder grandam G366 under Hoover Counselor N29 (above). Five G366 daughters or granddaughters are among the top 10 indexing cows of the Hoover herd, including the #1 and #2 indexing cows with 5-117 WR and 3-114 WR, respectively!
- ★ Owned with High Prairie Genetics, Leavenworth, KS and Steele Land & Livestock, Anita, IA.

HOOVER DAM



Calved
1-25-08

G18

#16124994

[AMF, CAF, D2F, DDF,
M1F, NHF, OHF, OSF]



Queen of Ellston K11
Pathfinder Hoover Dam
Daughter



Blueblood Lady Ellston M3
Hoover Dam Daughter

CED	BW	WW	YW	SC	DOC	HP	CEM	MILK	MB	RE	FAT
+7	-3	+46	+88	+.83	+21	+9.2	+8	+25	+.81	+.75	-.007
	20%				30%				20%	20%	25%

\$M
+55
\$F
+96 25%
\$B
+159 15%
\$C
+261 15%

S A F Connection #
SYDGEN C C & 7 #
SydGen Forever Lady 4087

TC Gridiron 258 #
ERICA OF ELLSTON C124 #
Erica of Ellston V65

SVF Gdar 216 LTD #
S A F Royal Queen 5084
SydGen 1407 Corona 2016 #
S A F Forever Lady 8292
G A R Grid Maker #
TC Blackbird 7049 #
S A Neutron 377 #
Shottish V047

SEMEN \$30 CERTIFICATES \$40

★ In today's world of unprecedented changes and challenges, one thing has seemed consistent: Hoover Dam daughters standing the test of time in the variety of environments. Hoover Dam daughters are arguably optimum in many areas important to the commercial cattleman making a living from cattle. Hoover Dam has truly established a brand name reputation for calving ease, muscle, docility, and maternal strength.

- ★ Hoover Dam is the all-time semen sales bull ever at ORIGen, and at 11 ½ years of age was laid to rest at ORIGen on 7-22-19. He sold nearly one quarter million units of semen and his influence has been felt on at least 4 continents. Semen and certificate sales grossed over \$5.1 million at the time of his death. Hoover Dam was the semen sales leader at ORIGen for 5 years. Although there are no official public records with which to compare, Dick Beck, Vice President of Sales and Marketing at ORIGen, says "Hoover Dam is the only sire in history owned exclusively by Angus breeders to have ever reached or surpassed that sales total!" Hoover Dam has 16,000 progeny through AHIR in over 1600 herds.
- ★ The Hoover Dam calves have exceptional thickness, especially for a bull with such a proven low birth weight. They have eye appeal, power and mass in a moderate framed package. Hoover Dam is a renowned sire for producing superior females. They are highly productive, functional, impeccable uddered females.
- ★ Pathfinder dam C124 has an impeccable record of 6-96 BWR, 6-114 WR, 6-106 YR, 40-101 IMF ratio and 40-102 Ribeye ratio. C124's 19 progeny to come to auction have averaged over \$12,000 to gross over \$230,000.
- ★ The Erica cow family at Hoover Angus that produced Hoover Dam has put a total of 9 sons in 6 different AI studs.

HOOVER TOP CUT S1

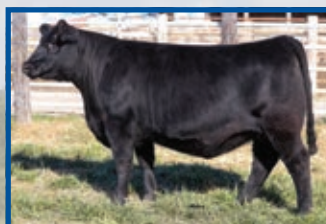


Calved
12-26-16

S1

18861923

[AMF, CAF, D2F,
DDF, M1F, NHF,
OHF, OSF, RDF]



Keymura Katy Ellston V253
S1 Daughter
Sells February 2, 2021

Pathfinders are important!
The Hoover-prefix bulls
in this sire directory
average over
7 Pathfinders
in their three generation
pedigree!

CED	BW	WW	YW	SC	DOC	HP	CEM	MILK	MB	RE	FAT
+11	+.1	+58	+117	+.19	+27	+9.3	+11	+33	+.40	+1.15	+.001
15%	25%		25%		10%		25%	10%		1%	

\$M
+56
\$F
+128 1%
\$B
+177 4%
\$C
+286 4%

Bruns Uppercut 610
BRUNS TOP CUT 373
Dakota Miss 669 Baf #

Hoover Dam #
MISS ERICA ELLSTON L102 #
Miss Erica Ellston J118

Sitz Upward 307R #
Dakota Ann 565 BAF
Mohnen Brushpopper 295 #
Dakota Miss 1785 Baf #
SydGen C C & 7 #
Erica of Ellston C124 #
ALC Titanic V13T
Miss Erica Ellston E298 #

★ This herd sire has been used in the Hoover and Mickey Angus herds, and has done well in both! Mickeys report that the S1 calves perform right along with the AI-sired calves, and are phenotypically very nice. S1 is a rock solid, super thick bull siring calves with nice

muscle, excellent depth of rib, structural soundness, and eye appeal.

- ★ S1's first daughters will sell as bred heifers in our 2021 production sale, and they are some of the nicest heifers in the pen! They are deep, broody females with a beautiful cow look.
- ★ S1 is from an exemplary Hoover Dam daughter that records a huge birth to weaning spread of 7-91 BWR, 7-107 WR, 5-102 YR, 5-108 IMF ratio and 5-101 Ribeye ratio. She has a 363 day calving interval on her 7 progeny, and has achieved Pathfinder honors. L102's four sons to come to auction have averaged a \$7700 selling price. Three of her sons have been among the top 10 adjusted weaning weight calves of the Hoover crop, and three of her sons work in registered Angus herds.
- ★ L102 is a one of the most perfect uddered cows on the farm, and has nice manners at calving time. She is a stylish cow that visitors to the farm easily find on pasture tours! She comes from a cow line that has been extremely productive through many, many generations. L102 is the 11th consecutive generation Miss Erica Ellston female to be bred, born, and raised in Ellston, Iowa.
- ★ Owned with Mickey Seeds, Pana, IL.

RRR PREDICTOR



Calved
1-18-19

R0069

19481606

[AMF, CAF, D2F,
DDF, M1F, NHF,
OHF, OSF, RDF]

CED	BW	WW	YW	SC	DOC	HP	CEM	MILK	MB	RE	FAT
+9	-.1	+74	+130	+17	+34	+15.8	+10	+27	+1.32	+.97	+.019
30%	25%	10%	10%		1%	10%			2%	10%	

- ★ Predictor was the \$14,000 top-selling bull in the 2020 Reverse Rocking R Sale.
- ★ A standout in the RRR pen of bulls for added frame and length, this bull has the #1 Marbling EPD in the Hoover herd bull line-up!

\$M	\$F	\$B	\$C
+81 5%	+109 4%	+196 1%	+335 1%

G A R Prophet #
BALDRIDGE FORECASTER B160
Baldrige Pratissa W165

baldrige Xpand x743
PINE VIEW RUBY C023
44 Ruby 2225

C R A Bextor 872 5205 608 #
G A R Objective 1885
GAR-EGL Protege #
Baldrige Pratissia S4
Hoover Dam #
Baldrige Queen S87
Boyd New Day 8005 #
B/R Ruby 1224

SEMEN \$20 CERTIFICATES \$40

- He scanned a 6.14 IMF to ratio 116 and a 14.1" ribeye to ratio 111.
- ★ Predictor's gentle disposition is readily apparent, and it is easy to see how he earned a top 1% Docility EPD. We are excited to continue the tradition of disposition excellence at Hoover Angus.
 - ★ Donor dam C023 is an excellent uddered, heavy muscled female with added frame size. Grandam was a \$55,000 donor female and a full sister to B/R New Day 454.
 - ★ Sire Forecaster is the \$100,000 sire featured in the Alta Genetics lineup. Jud Baldrige reports that Forecaster's dam is an excellent female right on the heels of their breed-leading Y69 cow. Three full sisters to Forecaster have been flushed at Baldriges, and they are attractive, good udder quality females.
 - ★ Owned with Reverse Rocking R Ranch, Maxwell, NM.

JAR INCREDIBLE 6104 808



Calved
1-26-18

808

19273962

[AMF, CAF, D2F,
DDF, M1F, NHF,
OHF, OSF, RDF]

CED	BW	WW	YW	SC	DOC	HP	CEM	MILK	MB	RE	FAT
+7	-1.0	+73	+127	+1.01	+22	+13.6	+9	+25	+.58	+.64	+.017
	10%	10%	15%		25%	20%					

- ★ Incredible was the lead-off, top-selling bull in the 2019 Jallo Angus Sale at \$17,000. This 7 frame bull is one of the most attractive bigger bulls we have found in recent times, and brings in superior

\$M	\$F	\$B	\$C
+58	+93 30%	+142 30%	+242 30%

Musgrave Invision
PANTHER CR INCREDIBLE 6704
Panther Cr JH Blackbird 409

TC Total 410 #
JAR ERICA 6104
JAR Ava Lee 048 3202

MCATL Pure Product 903-55 #
MCATL Evergreen 619-K27T
Apex Windy 078 #
Panther Cr JH Blackbird 221
Bon View New Design 208 #
TC Erica Eileen 2047
J A R Mega Bucks 9155
J A R Erica 1159

SEMEN \$25 CERTIFICATES \$40

- longevity through the bottom side of his pedigree.
- ★ Incredible's first crop of calves was impressive! One of our top heifer calves is sired by Incredible.
 - ★ One of the things we liked most about Incredible was his functional, highly productive dam that is 13 years old and going strong! She records 10-104 WR, 10-111 YR and is still excellent footed. Jallo's report, "She is one of our most productive cows who always weans off one of the heaviest calves. She and her daughters are beautifully uddered. Five sons have averaged \$9300!"
 - ★ Incredible's performance data: BW 80 lbs., WW 854 lbs., WR 117, YW 1500 lbs., YR 114, scrotal 37.9 cm.
 - ★ Owned with Jallo Angus Ranch, Fordville, ND.

SYDGEN SIZZLE



Calved
1-9-15

5113

18170011

[AMF, CAF, D2F,
DDF, M1F, NHF,
OHF, OSF, RDF]

CED	BW	WW	YW	SC	DOC	HP	CEM	MILK	MB	RE	FAT
+13	+1.2	+59	+110	+1.79	+33	+17.6	+8	+26	+.35	+.53	+.017
10%				4%	2%	2%					

- ★ Sizzle was the \$30,000 co-top selling bull of the fall 2015 SydGen Sale. He is a slick haired, deep bodied, level topped bull with excellent scrotal development. He is a super long bodied bull to

\$M	\$F	\$B	\$C
+70 15%	+86	+123	+230

Connealy Heat 0243 #
CONNEALY COOL 39L
JMc Jeena Allie 8345 5399 #

Pine Ridge Hammer S322 #
WK HAZEL 9201
ALC Hazel L12L

Connealy All Around #
Bunty Lanna of Conanga 556
H A Power Alliance 1025 #
Jeena of Conanga 357
Hyline Right Time 338 #
Belmont Lady 9015 3313 #
S V F Bandlerier
Alc Hazel K14H #

SEMEN \$20 CERTIFICATES \$40

- pack in extra pounds, which he has done. He continually stays extremely fleshy as a mature bull.
- ★ Sizzle is a superior disposition bull whose progeny reflect this important trait!
 - ★ Sizzle's first daughters in production are neat uddered and super slick haired. These cattle will thrive on fescue and be adaptable to a multitude of different environments.
 - ★ Sizzle's dam that we viewed the morning of the SydGen sale records 5-106 WR and 4-107 YR. Sizzle's grandam is the dam of ALC Big Eye D09N.
 - ★ Owned with Sydenstricker Genetics, Mexico, MO and Clifford Scott, Malvern, IA.

93 Years of Quality Angus Cattle

F.W. (Walt) and Sadye Hoover founded their registered Angus herd in 1928. Walt Hoover was known as the "Dean of Iowa Angus" and was a legend in Iowa Angus circles. With razor sharp wit and amazing power of recall, he could give vivid details of the great old-time breeders.

Hoover Angus is located near Ellston and Tingley, Iowa. Females bear "Ellston" in their pedigree name to signify the herd location and homestead of Hoover ancestors in 1856. This farm has been owned for 165 consecutive years by the Hoover family.

Walt often told the story of paying \$300 for Revolution's Bell Boy as a 3 month-old calf. Quite a price in the tough days of 1937, but he carried a sterling pedigree. He was used in the herd until his death at past 14 years. Sons and daughters of Revolution's Bell Boy were widely distributed to all corners of the country.

Certain other sires have left their mark. Crackerjack Baros 61, the \$33,000 son of "Prime Rate", was purchased from Erdmann Ranch. Summitcrest Revolution L011 was purchased from Fred Johnson's noted Summitcrest herd. This son of Byergos Black Revolution 36 was out of a top daughter of Columbus Adventure 310, a former show heifer bred by the renowned Herman Purdy.

Walt Hoover was never reluctant to serve the larger interests of the breed. When he was President of the Iowa Angus Association, he attended 65 Angus events during one year. Sadye was at his side at all times. She could always spot the good cattle and was instrumental in founding the Iowa Angus Auxiliary.

Second generation John and Barb (Hoover) Kiburz joined with Walt & Sadye in 1953. It was with the same enthusiasm and drive that John took over the entire herd upon Walt's death. John purchased additional land to total 2200 acres and the cow herd increased to 400. Much like Walt and Sadye, John and Barb attended countless Angus events together. In her older years, Barb's duty was to "check for white" on the undercarriage of animals.

John & Barb's daughter Joy, and her husband David McFarland, then returned back to the farm in 1980. John, David, and Joy served numerous positions in state and local Angus organizations, including Joy being the President of the Iowa Angus Auxiliary.

February 1991 was the inaugural Hoover Angus sale. The first Tuesday in February is still the date of the annual sale. The sale is truly a family affair as the family manages their own sale

and writes their own sale catalog.

The 1990-2000 decades showed movement up the ladder for Hoover Angus as the Hoover family purchased their first bull to join a bull stud, SA Neutron 377. Following on his heels were TC Gridiron 258, then SydGen CC&7. From CC&7 came Hoover Dam, the first Hoover-prefix bull to be in a bull stud. Hoover Dam has grossed over \$5 million in semen and certificates sales to be one of the top income-producing AI sires in Angus history. Hoover Angus has owned or bred 34 bulls that have seen tenure in 8 different bull studs. Semen from these bulls is marketed on 5 continents.

Fourth generation Landi (McFarland) Livingston started writing footnotes for the farm's annual production sale in high school, and by her college years, was writing the entire catalog, a 60+ page book. Landi and her husband Andrew Livingston join David, Joy, and John in the day-to-day activities of Hoover Angus. This family team has a combined 197 years of registered Angus experience! The family has no "off farm" jobs, and the cattle must pay the bills, as they have for the past 93 years!

The cow herd became a closed cow herd twenty years ago, and the vast majority of current cow lines trace back 10+ generations of Hoover blood. One cow family has been in production for 19 consecutive generations at Hoover Angus. The present herd is 300 spring calving cows and 100 fall calving cows. The annual production sale offers 100 bulls and 80 females with price ranges to fit any budget. Hoover Angus strives to produce sound, functional cattle with EPD excellence that is not just genomic based. The cattle thrive on fescue and are adaptable to a multitude of different environments.

Hoover Angus is a Maternal Plus® herd and a leader in accurate collection and submission of a multitude of different phenotypes from foot scores to hair shed scores as well as genomics. An extensive website at www.hooverangus.com details 30 herd sires, past and present sales, and further history and philosophies of Hoover Angus. The annual Hoover Angus sale catalog offers a volume of information rarely found.

Angus herds come and go, but Hoover Angus has built a reputation you can rely on for honesty, integrity, and cattle with multi-trait superiority. At Hoover Angus, we are proud of our history, we treasure the present, and we set our sights on the future!



**Herd Founders
Walt & Sadye
Hoover**



**Second Generation
John & Barb
Kiburz**



**Third Generation
David & Joy
McFarland**



**Fourth Generation
Andrew & Landi
McFarland-Livingston**



**Potential
Fifth Generation
Gwen & Ty**

Same Family...

Same Farm...

Same Mission...

Superior Quality