

HOOVER *Angus*

2020

Semen & Herd Sire Directory

Hoover No Doubt



Hoover Know How



Balldridge Chairman



Mogck Entice



Hoover Notary



Hoover Counselor N29



Balldridge 38 Special



Hoover Special Edition 3454



Frey's Cowboy Logic



Andrew & Landi McFarland-Livingston

Ellston, IA 50074 • landi@hooverangus.com
641-344-7684

John Kiburz

1044 255th Ave.
Tingley, IA 50863
641-344-3990

David & Joy McFarland

1318 250th Ave.
Tingley, IA 50863
641-344-3234

www.hooverangus.com

www.facebook.com/HooverAngusFarm

A supplement to the February 4, 2020 Hoover Angus sale book and the January 2020 *Angus Journal*. EPDs current as of 11-29-19.

MOGCK ENTICE



Calved 1-31-17 2577 18952921 [AMF, CAF, D2F, DDF, M1F, NHF, OHF, OSF, RDF]

CED	BW	WW	YW	SC	DOC	HP	CEM	MILK	MB	RE	FAT
+4	+2.9	+82	+144	+2.32	+32	+10.0	+2	+26	+.84	+.85	-.011
		2%	2%	1%	2%				15%	10%	20%

\$M	\$F	\$B	\$C
+67 30%	+123 2%	+191 2%	+315 1%

SydGen Exceed 3223
SYDGEN ENHANCE
 SydGen Rita 2618
 Mogck Sure Shot 253
MOGCK ERICA 2255
 MOGCK Erica 2162

SydGen Googol
 SydGen Forever Lady 1255
 SydGen Liberty GA 8627 #
 Fox Run Rita 9308 #
 MOGCK Sure Shot #
 Mogck Miss 61
 Connealy 5050 611B
 MOGCK Erica 08

SEMEN \$30 CERTIFICATES \$40

- ★ Boasting a +315 \$C, this young sire not only nails it on paper, but stamps his high growth progeny with thickness, style, and a commanding presence! The Hoover family is as excited about this bull as any bull they have purchased in the past 10+ years! His outcross pedigree makes him a very a "fresh" find for the breed.
- ★ In August 2019, we weaned over 70 Entice calves, and they have been impressive since birth. Visitors to the farm during the summer picked Entice calves as the best sire group. Our Entice heifer calves had an average 104 WR and bull calves had an average 103 WR.
- ★ The #1 adjusted weaning weight bull AND heifer of our spring 2019 crop were both sired by Entice. Six of the top 8 adjusted weaning weight bull calves were sired by Entice. Our first Entice sons and daughters will be offered in our February 4, 2020 sale.
- ★ Entice was the \$42,000 top-selling bull in the 2018 Mogck & Sons sale, where the sire group of Enhance sons made a tremendous showing, leading off the sale catalog and producing the top two selling bulls.
- ★ Entice offers a correct skeleton and exceptional phenotypic presence in a mid-6 frame. He is wide based, super long, big ribbed, square hipped, tight sheathed, and has abundant thickness. He has a very nice disposition, which is validated by his score of 1 on the 50K test for Docility. Entice exhibits superior foot shape, and his calves at this point appear to have very correct foot shape.
- ★ Entice had a very solid set of performance data: BW 77 lbs., WW 886 lbs., WR 116 among 216 contemporaries, YW 1544 lbs., YR 114, IMF 4.94, ratio 118, ribeye 17.0", ratio 114. He was the 5th top weaning weight and 5th top yearling weight bull of the Mogck sale.
- ★ Entice's dam records 3-99 BWR, 3-108 WR, and 2-109 YR with a 355 day calving interval – she may just earn Pathfinder honors in the 2020 Report!



Hoover Entice V24
 Entice Son
 Sells February 4, 2020



Hoover Entice V63
 Entice Son
 Sells February 4, 2020



Hoover Entice V22
 Entice Son
 Sells February 4, 2020



Hoover Entice V40
 Entice Son
 Sells February 4, 2020



Hoover Entice V43
 Entice Son
 Sells February 4, 2020



Hoover Entice V74
 Entice Son
 Sells February 4, 2020



Hoover Entice V125
 Entice Son
 Sells February 4, 2020



Blackcap Empress Ellston V27
 Entice Daughter
 Sells February 4, 2020

- ★ Sire Enhance has been a high volume semen producer at ORlgen, and was their top-selling bull in 2019. Enhance progeny score well genomically.
- ★ Entice was an excellent pen breeder and a high libido bull during natural service.
- ★ Owned with Mogck & Sons Angus, Olivet, SD; TK Angus, Wood Lake, NE; and Select Sires, Plain City, OH.



Blackcap Mary of Ellston V136
 Entice Daughter
 Sells February 4, 2020

For more photos and detailed information on Hoover herd sires, visit
www.hooverangus.com/herdsires.html

HOOVER NO DOUBT



Calved
1-29-14

N68

17882682

[AMF, CAF, DDF,
NHF, OHF, OSF]

CED	BW	WW	YW	SC	DOC	HP	CEM	MILK	MB	RE	FAT
+1	+3.9	+79	+146	+2.01	+35	+17.1	+11	+20	+95	+95	+034
		2%	1%	2%	1%	2%	25%		10%	4%	

\$M
+64
\$F
+125 2%
\$B
+195 1%
\$C
+317 1%

MOGCK Sure Shot #

MOGCK BULLSEYE #

Mogck Mary 1255

SydGen C C & 7 #

MISS BLACKCAP ELLSTON J2

Miss Blackcap Ellston D154 #

Mytty In Focus #

Mogck Black Lass 2065

K C F Bennett Coalition SCC #

Mogck Mary C 1757

S A F Connection #

SydGen Forever Lady 4087

TC Gridiron 258 #

Miss Blackcap Ellston A269

- ★ No Doubt is the \$67,500 top-selling bull in our 92-year history! Limited semen further bolsters demand for his progeny. Three of the top 5 selling bulls in our 2019 sale, all over \$25,000, were sired by No Doubt.
- ★ No Doubt progeny have met the market's demands for width of base, superior feet, and sound skeletons with real-life true performance that is not just genomic-based. No Doubt consistently transmits the style and eye appeal everyone likes. He is exceptionally stout and puts an uncommon amount of meat and muscle in his calves.



Blueblood Lady Ellston T74

\$12,500 No Doubt Daughter



Hoover No Doubt S34

\$27,500 No Doubt Son

No Doubt calves undoubtedly come to the top of every crop.

- ★ Sixty-three daughters in production have an average 101 WR on their 80 progeny through AHIR.
- ★ Backed by Bullseye and CC&7 – two of the highest Docility EPD proven bulls in the history of this EPD – No Doubt progeny are breed leaders for this important trait.
- ★ No Doubt was a hunk that turned in an adjusted 1540 pound yearling weight, ratio 113 to be the #1 adjusted yearling weight bull in our sale! He also tied as the top scanning ribeye bull (among 81 yearlings) with a 17.3" ribeye, ratio 114!
- ★ Donor dam J2 was the lead-off, \$20,000 top-selling open heifer from our 2011 auction and as an 8 year-old cow sold ½ interest for \$150,000! J2 exhibits a remarkably feminine, extended front for the amount of width of base, power and thickness she possesses. She was one of the classiest females we have ever produced. J2 is a 10th generation Hoover Angus bred, born, and raised Blackcap Ellston female and exemplifies the traits we have focused on for decades. At eight years of age, she hit her financial stride, generating nearly a quarter million dollars of revenue in a 12 month period for her new owners.
- ★ When we sold J2, we retained one flush, and had five live calves born in 2014. Only one was a bull, No Doubt. One sister was the #1 adjusted WW heifer of her crop at 850 pounds and we sold a flush out of this tremendous cow for \$24,000.
- ★ Owned with Alta Genetics, Rocky View County, AB and Spruce Mountain Ranch, Larkspur, CO.

HOOVER KNOW HOW



Calved
1-27-16

R67

18543644

[AMF, CAF, D2F,
DDF, M1F, NHF,
OHF, OSF, RDF]

CED	BW	WW	YW	SC	DOC	HP	CEM	MILK	MB	RE	FAT
+4	+2.3	+63	+130	+2.04	+22	+19.2	+11	+24	+85	+1.04	+002
		25%	5%	2%	25%	1%	25%		15%	2%	

\$M
+61
\$F
+131 1%
\$B
+201 1%
\$C
+322 1%

Mogck Bullseye #

HOOVER NO DOUBT

Miss Blackcap Ellston J2

SydGen Storm 8504

BLKCP EMPRESS ELLSTON L265 #

Blkcp Empress Ellston J120

MOGCK Sure Shot #

Mogck Mary 1255

SydGen C C & 7 #

Miss Blackcap Ellston D154 #

SydGen Contact #

G A R 616 Rito 2472

Basin Excitement #

Blackcap Empress Ellston F29

SEMEN \$30 CERTIFICATES \$40

- ★ Know How is the #1 \$C Hoover-owned sire!
- ★ Know How is a super stout, thick, moderate sized, great footed, big testicle, excellent disposition bull that has the look of his

father, No Doubt. From one of the longest standing, most successful cow families in the 92-year history of Hoover Angus, this bull brings a special pedigree to the breed.

- ★ The first Know How calves at Hoover Angus were born in the spring of 2019, and at a couple months of age, we knew these calves would be special! They are sharp-looking calves with a strong hip, powerful hind leg, sound structure, and excellent thickness. They have the power and growth one would expect from a No Doubt line. After seeing his first calves, we used Know How heavier in our 2019 breeding program.
- ★ Know How weaned at 823 pounds, WR 108, YW 1354 lbs., YR 102, and scanned a 15.7" ribeye to ratio 104. Know How successfully froze large volumes of high quality semen.
- ★ Pathfinder dam L265 is an exceptional ordered, easy fleshing female and very calm in her demeanor. She is an 11th generation Blackcap Empress Ellston female to be bred, born, and raised at Hoover Angus. This has been a tremendously successful cow family through many generations. Fifth generation dam C57 has given rise to a phenomenal cow family. Eighty-two daughter descendants have stemmed from C57, including 16 Pathfinders and 7 donor cows! Four bulls selected for use in the Hoover herd have also stemmed from C57.
- ★ Owned with Teixeira Cattle Co., Pismo Beach, CA and Select Sires, Plain City, OH.



Hoover Know How V81

Know How Son

Sells February 4, 2020

HOOVER NOTARY



Calved
8-18-17

\$427

19125912

[AMF, CAF, D2F,
DDF, M1F, NHF,
OHF, OSF, RDF]

CED	BW	WW	YW	SC	DOC	HP	CEM	MILK	MB	RE	FAT
+6	+2.4	+80	+133	+2.25	+31	+17.5	+10	+26	+71	+88	+0.04
		2%	4%	1%	2%	2%			30%	10%	

- ★ The stud of our fall bull offering in our 2019 sale, Notary was the top-selling bull at \$38,000! Notary is a really thick, wide based,

\$M
+86 3%
\$F
+119 2%
\$B
+180 2%
\$C
+319 1%

Mogck Bullseye #
HOOVER NO DOUBT
Miss Blackcap Ellston J2

Basin Excitement #
PRIM LASSIE ELLSTON L455
Prim Lassie Ellston H491

MOGCK Sure Shot #
Mogck Mary 1255
SydGen C C & 7 #
Miss Blackcap Ellston D154 #
Basin Expedition R156
Basin Lady S532 AK
TC Friction 5130 #
Prim Lassie Ellston B501 #

SEMEN \$25 CERTIFICATES \$40

correct made, nice profiling, big scrotal, good footed bull. He is a proud bull that exemplifies the traits found in No Doubt. Notary saw significant usage at Hoover Angus in 2019.

- ★ This high growth bull really offers a rare combination of traits – he combines high end product merit with a superior disposition, excellent maternal traits, and exceptional SC.
- ★ He can improve scrotal size in bloodlines where yearling bulls struggle to pass a yearling semen test.
- ★ Dam L455 is a nice uddered cow with a 350 day calving interval.
- ★ Owned with Golden Chute Ranch, Walker, IA; IMS Cattle, Gibson City, IL; and Tim Hackett Farms, Canton, IL.

HOOVER LONGEVITY T40



Calved
1-15-18

T40

19201438

[AMF, CAF, D2F,
DDF, M1F, NHF,
OHF, OSF, RDF]

CED	BW	WW	YW	SC	DOC	HP	CEM	MILK	MB	RE	FAT
+3	+4.1	+70	+134	+2.70	+28	+16.8	+5	+26	+93	+45	+0.47
		10%	3%	1%	10%	3%			15%		

- ★ Longevity was the \$26,000 Lot 1, lead-off bull in our 2019 auction. He was the #1 adjusted WW bull of the crop at 911 pounds! He was the #1 YW bull at 1546 pounds, YR 117 and an upper 6 frame. SC 42 cm, 5.59 IMF, ratio 154, ribeye 16.2", ratio 113.
- ★ Longevity is square, correct, has superior thickness and a great

\$M
+61
\$F
+86
\$B
+148 20%
\$C
+253 25%

Mogck Bullseye #
HOOVER NO DOUBT
Miss Blackcap Ellston J2

TC Friction 5130 #
QUEEN OF ELLSTON H115 #
Queen of Ellston C50 #

MOGCK Sure Shot #
Mogck Mary 1255
SydGen C C & 7 #
Miss Blackcap Ellston D154 #
TC Friction 3275
TC Barbara 3022
Roth Famous 1006 #
Hawley West Girl 227

SEMEN \$20 CERTIFICATES \$40

scrotal. He is wide based, good footed, and has lots of body. He is a proud bull – he was the best in his crop and he knew it!

- ★ Dam H115 and grandam C50 are the *only* mother-daughter pair in the herd where both cows have achieved Pathfinder status and have both grossed over \$100,000 in registered progeny sales!
- ★ H115 records 9-99 BWR, 9-110 WR, 7-106 YR, 15-106 IMF ratio and 15-102 ribeye ratio! H115 has been flushed four times, and still maintains an exceptional 364 day calving interval. H115's 9 sons to come to auction have averaged \$11,475, and her two daughters \$6500.
- ★ Pathfinder grandam C50 has perfected perfection! She is still going strong at over 15 years of age! We have stolen 6 flushes on C50 and she has a 363 day calving interval on 13 progeny! The fertility in this cow family is second-to-none!
- ★ Owned with Mohnen Angus, White Lake, SD.

HOOVER SPECIAL EDITION S454



Calved
8-23-17

\$454

19125070

[AMF, CAF, D2F,
DDF, M1F, NHF,
OHF, OSF, RDF]

CED	BW	WW	YW	SC	DOC	HP	CEM	MILK	MB	RE	FAT
+8	+8	+86	+144	+1.03	+29	+9.1	+3	+31	+73	+62	+0.26
		1%	1%		4%			10%	25%		

- ★ This outcross pedigree bull was the 4th top weaning weight bull of his crop! He is a smooth, good looking bull with a tight sheath and

\$M
+63
\$F
+86
\$B
+143 25%
\$C
+248 25%

EF Commando 1366
BALDRIDGE 38 SPECIAL
Baldrige Isabel Y69

Connealy Direct Deposit #
EDELLA OF ELLSTON N473
Edella of Ellston K264

EF Complement 8088 #
Riverbend Young Lucy W1470
Styles Upgrade J59 #
Baldrige Isabel T935
Connealy Danny 5398
Boka Rae of Conanga 168
Basin Excitement #
Edella of Ellston H232 #

SEMEN \$25 CERTIFICATES \$40

excellent feet. He has an amazing amount of style and eye appeal for a bull that displays optimal calving ease and pushes the upper limits for growth. He is a rare find!

- ★ Dam N473 ties as the 4th top indexing cow of the entire herd! She has a 361 day calving interval and 3-111 WR.
- ★ Special Edition is backed by six consecutive generations of high ratioing, highly productive females with superior udder quality.
- ★ Special Edition was used both AI and natural service in the 2019 Hoover breeding program. He was to be the lead-off bull in the 2019 sale, but got injured and had not recovered by sale time.

BALDRIDGE 38 SPECIAL



Calved 1-13-15 C040

18229487 [AMF, CAF, D2F, DDF, M1F, NHF, OHF, OSF]

CED	BW	WW	YW	SC	DOC	HP	CEM	MILK	MB	RE	FAT
+10	-.2	+76	+127	+1.02	+19	+9.0	+6	+24	+1.14	+.34	+.047
25%	20%	4%	10%						4%		

\$M
+63
\$F
+72
\$B
+142 30%
\$C
+247 25%

EF Complement 8088 #
EF COMMANDO 1366
 Riverbend Young Lucy W1470
 Styles Upgrade J59 #
BALDRIDGE ISABEL Y69
 Baldridge Isabel T935

Basin Franchise P142 #
 EF Everelda Entense 6117
 B/R Ambush 28 #
 Riverbend Young Lucy T1080
 Sitz Upward 307R #
 Plainview Lassie 71B
 Baldridge Kaboom K243 KCF #
 Baldridge Isabel P4527

SEMEN \$30 CERTIFICATES \$33

- ★ The marbling king at Hoover Angus with frame, performance, and eye appeal! Ultrasound data from the spring 2018 Hoover Angus heifer crop showed that the top FOUR marbling heifers among 100+ heifers were all sired by 38 Special! This sire now has over 250 progeny with a whopping 110 IMF ratio!
- ★ 38 Special sons were favorites in our February 2018 auction, where 18 yearling sons averaged \$9806, over \$3300 above the yearling bull average! In our 2019 sale, 29 sons averaged \$8620.
- ★ 38 Special calves have added frame, length and muscle and are visual favorites of visitors to Hoover Angus. Many heifers have calved successfully to 38 Special, and we do recommend him as



Lady Ida of Ellston T86
 38 Special Daughter
 Sells February 4, 2020



Pride of Ellston V62
 38 Special Daughter
 Sells February 4, 2020



Hoover 38 Special S25
 \$12,000 38 Special Son



Baldridge Isabel Y69
 Dam of 38 Special

a safe choice for use on heifers. His daughters now in production are beautifully uddered females that raised some exceptional calves their first year. A 38 Special daughter raised the #1 adjusted weaning weight heifer calf of our spring 2019 crop!

- ★ In the spring 2018 Hoover crop, both the #1 adjusted weaning weight bull and #1 adjusted weaning weight heifer (non-ET) were sired by 38 Special. A total of 6 of the top 10 adjusted weaning weight bulls were sired by 38 Special, and the exact same was true for top weaning weight heifers – 6 of the top 10!
- ★ In 38 Special's first calf crop in 2017, a heifer calf was the #1 adjusted weaning weight heifer of the crop at 872 pounds, which is the heaviest adjusted weaning weight of any female in Hoover history!
- ★ 38 Special was our pick of the bulls in the 2016 Baldridge sale, where 38 Special and his 6 flush brothers averaged \$58,928. 38 Special was the 3rd top-selling bull of the event at \$100,000!
- ★ 38 Special was definitely the power, high performance bull of his flush and a standout with added frame in the Baldridge offering. Dam Y69 is the most influential cow in Baldridge history, and is one of the top income-producing cows in the history of the breed.
- ★ Owned with Alta Genetics, Rocky View County, AB and Baldridge Bros., North Platte, NE.

HOOVER 38 SPECIAL S4



Calved 12-31-16

S4

18861925

[AMF, CAF, D2F, DDF, M1F, NHF, OHF, OSF, RDF]

CED	BW	WW	YW	SC	DOC	HP	CEM	MILK	MB	RE	FAT
+6	-.3	+80	+139	+1.55	+33	+9.9	-1	+21	+.84	+.62	+.032
	20%	2%	3%	10%	1%				15%	30%	

- ★ S4 was the \$39,000 top-selling bull of our 2018 auction. This short gestation bull was the 2nd top adjusted weaning weight bull of his crop! BW 72 lbs., WW 905 pounds, WR 116, YW 1427 lbs., YR 110, 41.55 cm scrotal, 4.18 IMF, ratio 118, and a 17.2" ribeye, ratio 114.
- ★ S4 is a soft-made, easy fleshing, thick, deep sided bull that we

\$M
+59
\$F
+85
\$B
+145 25%
\$C
+247 25%

EF Commando 1366
BALDRIDGE 38 SPECIAL
 Baldridge Isabel Y69

Hoover Dam #
BLUEBLOOD LADY ELLSTON M3
 Blueblood Lady Ellston H118 #

EF Complement 8088 #
 Riverbend Young Lucy W1470
 Styles Upgrade J59 #
 Baldridge Isabel T935
 SydGen C C & 7 #
 Erica of Ellston C124 #
 TC Friction 5130 #
 Blueblood Lady Ellston B305 #

SEMEN \$25 CERTIFICATES \$40

predict to make superior females. He is a little more moderate in his frame than most 38 Specials.

- ★ Few bulls in the breed have the "spread" that S4 does. Only one other Angus sire with a sub-zero BW EPD can hit the +80 WW EPD mark with the Docility level S4 offers!
- ★ Dam M3 is a 17th generation bred, born, and raised Hoover cow! She is a superior uddered, good disposition, solid phenotype cow that raises a whale of a calf every year. She became a donor due to her superior production, fertility, feet, and udder. She recently sold to Locust Grove Beef Cattle in Ohio for \$20,000.
- ★ Pathfinder grandam H118 produced 3 sons at \$10,000+!
- ★ Pathfinder great grandam B305 produced three Pathfinder daughters and at 14 years of age, her udder was superb!
- ★ Owned with Eagle Hill Farms, Lucas, IA.

BALDRIDGE CHAIRMAN



Calved
1-17-16

D073

18587751

[AMF, CAF, DDF,
NHF, OHF, OSF]



Hoover Chairman V67
Chairman Son
Sells February 4, 2020



Miss Blackcap Ellston T269
Chairman Daughter
Sells February 4, 2020

GED	BW	WW	YW	SC	DOC	HP	CEM	MILK	MB	RE	FAT
+11	-7	+71	+125	+90	+19	+9.9	+17	+25	+71	+77	+014
15%	15%	10%	10%				1%		25%	15%	

\$M
+66
\$F
+80
\$B
+138 30%
\$C
+245 30%

Connealy Confidence 0100 #
FORTUNES CONQUEST 224
Fortunes 4412 Ethelda 742

G A R Prophet #
BALDRIDGE ISABEL B061
Baldrige Isabel Y69

Connealy Tobin
Becka Gala of Conanga 8281
S A V 004 Traveler 4412
Fortunes 112 Ethelda 423
C R A Bextor 872 5205 608 #
G A R Objective 1885
Styles Upgrade J59 #
Baldrige Isabel T935

SEMEN \$25 CERTIFICATES \$33

★ We are extremely impressed with Chairman progeny! They are growthy cattle with more look and style than most. Phenotypically, they were my favorite sire group in our 2018 crop. Chairman has been used successfully on both cows and heifers at Hoover Angus. His first daughters will calve in the spring of 2020, and they are beautiful females that look to make model Angus cows.

★ Chairman is a deep bodied, massive type bull selected for \$55,000. Chairman was definitely a favorite of Jud's in their sale, as he earned a painted picture in the Taft Building. Chairman was the #1 yearling weight bull of the auction at 1442 lbs., YR 115. He had an 80 pound birth weight, WW 842 lbs., WR 113. He is a loose-skinned, stylish bull that offers a more moderate frame than most Hoover cattle.

★ We viewed Chairman's dam, B061, before purchasing Chairman, and found her to be an exceptional uddered young cow. She was a first calf heifer with Chairman, and is a full sister to Baldrige Beast Mode at Genex. B061 is the dam of the \$170,000 Baldrige Thor and the \$110,000 Baldrige Pappy. Chairman's grandam is the famous Y69 donor cow, the dam of 38 Special and the 2017 Baldrige sale topper, Baldrige Colonel at \$580,000.

★ Sire Conquest has been used successfully on over 1500 head of commercial first calf heifers in South Dakota. Conquest is long, thick, and sound with extra muscle and capacity.

★ Owned with Alta Genetics, Rocky View County, AB and Baldrige Bros., North Platte, NE.

BRUNS TOP CUT 373



Calved
1-21-13

373

17680548

[AMF, CAF, D2F,
DDF, M1F, NHF,
OHF, OSF, RDF]



Miss Erica Ellston T187
Top Cut Daughter
Sells February 4, 2020



Hoover Top Cut S1
\$10,000 Top Cut Son

GED	BW	WW	YW	SC	DOC	HP	CEM	MILK	MB	RE	FAT
+14	+2	+66	+127	+46	+20	+13.5	+11	+29	+43	+1.04	-.034
4%	30%	20%	10%		30%	20%	25%	20%		2%	5%

\$M
+67 30%
\$F
+122 2%
\$B
+176 4%
\$C
+295 3%

Sitz Upward 307R #
BRUNS UPPERCUT 610
Dakota Ann 565 BAF

Mohnen Brushpopper 295 #
DAKOTA MISS 669 BAF #
Dakota Miss 1785 Baf #

Connealy Onward #
Sitz Henrietta Pride 81M
TC Freedom 104 #
Dakota Ann 24M S D G
Mohnen Brushpopper 353
Mohnen Jilt 1283
TC Freedom 104 #
Dakota Mis 697 S D G

SEMEN \$25 CERTIFICATES \$35

★ Top Cut serves as one of our most complete herd sires. His progeny have been in high demand. A total of 29 Top Cut sons in our 2017 auction averaged over \$8400 to be the top selling sire group. Two Top Cut sons were selected by bull studs, Hoover Cut Above P427 and Hoover Top Notch P409. Two Top Cut daughters

topped our 2018 auction at \$48,000 and \$22,000.

★ Top Cut's calves are low birth weight with a very solid phenotype and structural correctness. Top Cut sired the #1 adjusted weaning weight heifer calf of the spring 2016 Hoover calf crop at 827 pounds! Daughters in production are deep ribbed, good footed, complete made, ideal milking females with nice udder quality. Daughters have an average 103 WR on their progeny!

★ Top Cut was our \$28,000 selection from the 2014 Bruns sale, where he was the second top-selling bull. He was the most complete, bigger framed bull we saw in 2014 and boasted a large pelvic area. Top Cut is a deep, soggy bull that serviced cows as a yearling and held his flesh well. Top Cut stayed an excellent footed bull into his mature years.

★ Top Cut had solid performance data: BW 80 lbs., WW 795 lbs., WR 105, YW 1429 lbs., YR 106. He scanned a 4.85 IMF, ratio 124 and a 16.5" ribeye, ratio 111. Before we purchased Top Cut, we viewed his dam, a Pathfinder, who records 3-98 BWR and 3-105 WR. She is an excellent footed cow with a nice udder and perfect teat size.

★ Owned with Bruns Angus, Madison, SD.

HOOVER CHIEF

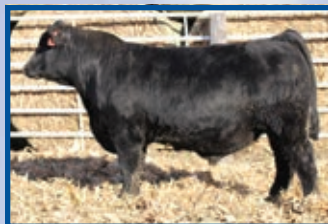


Calved
1-24-15

P54

18209629

[AMF, CAF, D2F,
DDF, M1F, NHF,
OHF, OSF]



Hoover Chief T71
\$5750 Chief Son



Chief's feet, January 2016

CED	BW	WW	YW	SC	DOC	HP	CEM	MILK	MB	RE	FAT
+2	+2.6	+68	+120	+49	+16	+12.0	+5	+26	+36	+98	-.046
		15%	15%							4%	2%

\$M
+49
\$F
+127 1%
\$B
+178 3%
\$C
+280 10%

Connealy Consensus #
CONNELLY COMMANDER
Gespa of Conanga 9380

SydGen Journey 8200
QUEENMERE OF ELLSTON K189 #
Queenmere of Ellston G218 #

KMK Alliance 6595 187 #
Blinda of Conanga 004
Rito 6EMA of 4L3 Emblazon #
Gossipa of Conanga 787
SydGen Journey 4355
Basin Lucy 1736
SydGen C C & 7 #
Queenmere of Ellston D30

SEMEN \$20 CERTIFICATES \$33

- ★ Chief was selected for AI and natural service use at Hoover Angus. A standout since he was little, Chief is a stout, powerful, correctly made bull with excellent feet and leg structure. He is a mid-6 frame bull with a superb disposition. Now as a mature bull, Chief has a

- very commanding presence and looks phenomenal!
- ★ Chief had very solid performance data: BW 90 lbs., WW 868 lbs., WR 114, YW 1426 lbs., YR 108, IMF 3.69, ratio 114, ribeye 15.0, ratio 99. He tied as the 3rd top weaning weight bull of his crop! A full brother to Chief was the 6th top weaning weight bull of his crop.
- ★ Pathfinder dam K189 is a big framed, high producing cow with 6-106 WR and 4-104 YR with a 359 day calving interval. Her first daughter was the 8th top weaning weight heifer of her crop! A full sister to Chief was a top heifer in our 2017 crop that weaned at 736 pounds. K189 is a great cow to work with at calving time.
- ★ Owned with Alta Genetics, Rocky View County, Alberta.

Pathfinders are important!
The Hoover-prefix bulls in this sire directory
average over 7 Pathfinders in their three
generation pedigree!

MBG DELMONICO



Calved
1-22-15

1502

18294795

[AMF, CAF, D2F,
DDF, M1F, NHF,
OHF, OSF, RDF]



Hoover Delmonico V116
Delmonico Son
Sells February 4, 2020



Delmonico's feet as a
coming three year-old

CED	BW	WW	YW	SC	DOC	HP	CEM	MILK	MB	RE	FAT
+9	+3.0	+64	+120	+2.02	+20	+14.6	+14	+29	+97	+67	-.008
30%		20%	15%	2%	30%	10%	5%	20%	10%	25%	25%

\$M
+73 15%
\$F
+99 20%
\$B
+171 5%
\$C
+295 3%

A A R Ten X 7008 S A #
V A R DISCOVERY 2240
Deer Valley Rita 0308

Summitcrest Complete 1P55 #
MONARCH BLACKBIRD 1104M
R T R Blackbird 5106

Mytty In Focus #
A A R Lady Kelton 5551 #
Sitz Upward 307R #
G A R Objective 2345
C F Right Design 1802 #
Summitcrest Elba 1M17
B/R New Frontier 095 #
ACF Blackbird 1119

- ★ Delmonico is a proud, easy fleshing, long bodied, soft made, deep ribbed bull with balanced performance and end-product merit. He is an attractive bull with excellent structure, hoof shape and depth of heel. We purchased Delmonico as a coming three year-old, and one of his greatest assets were his feet that had never been trimmed. His added muscle expression, depth of rib and extra volume distinguishes him among the current field of Discovery sons.

- ★ Delmonico's first calves will come to auction in our February 4, 2020 sale, including the #1 adjusted weaning weight bull of his first calf crop at 867 pounds. A Delmonico heifer was selected as the "Pick of the Fall Heifers" for \$13,000 in our fall 2019 mini online sale. Delmonico's calves are stout, impressive, and at the top of their crop.
- ★ Like his dam, Delmonico is very docile and easy to work with.
- ★ Delmonico's dam, 1104M, is a gorgeous mother cow with a beautiful balanced udder with small teats. She has raised three natural heifer calves that are retained in the herd at MB Genetics with an adjusted average weaning weight over 700 pounds. She has produced three ET bull calves with an adjusted average weaning weight of 753 pounds. 1104M scanned an individual 6.7% IMF and her first daughter scanned over 8.6% for IMF to give Delmonico a family heritage of added carcass merit.
- ★ Delmonico's individual performance mirrors his genetic evaluation arriving with an adjusted birth weight of 83 pounds, adjusted weaning weight of 864 pounds and reaching an adjusted YW of 1,632 pounds.
- ★ Owned with MB Genetics, Alexandria, SD.

HOOVER 44 MAG



Calved
1-10-18

T28

19201436

[AMF, CAF, D2F,
DDF, M1F, NHF,
OHF, OSF, RDF]

CED	BW	WW	YW	SC	DOC	HP	CEM	MILK	MB	RE	FAT
+0	+3.3	+87	+142	+1.49	+18	+13.5	+7	+30	+.70	+.51	+.048
		1%	2%	15%		20%		15%	30%		

- ★ 44 Mag was the 2nd top WW ET bull of his crop at 879 lbs., WR 113, YW 1476 lbs., YR 112! He is a super long bull that is extended in his front and really stout. He is a big scrotal bull. Expect him to sire

\$M	\$F	\$B	\$C
+54	+91	+142	+238
25%	30%		

EF Commando 1366
BALDRIDGE 38 SPECIAL
Baldrige Isabel Y69

Roth Famous 1006 #
QUEEN OF ELLSTON C50 #
Hawley West Girl 227

EF Complement 8088 #
Riverbend Young Lucy W1470
Styles Upgrade J59 #
Baldrige Isabel T935
Famous 7001 #
Roth Formera 9199
Great Western of Verola 478
Lickings Eldorado 371 806

SEMEN \$35 CERTIFICATES \$33

feeder calves that have the frame appropriate to achieve high rates of gain. 44 Mag sold for \$24,000 in our 2019 auction.

- ★ Pathfinder and donor dam C50 is still walking smooth and easy, has an exceptional udder, and fertility second-to-none. See a video of her taken 4 months shy of 16 years of age on 44 Mag's herd sire page on our website.
- ★ C50 has grossed over \$137,000 on registered progeny sales and is one of our all-time greatest cows. We have stolen 6 flushes from C50 and she has a 363 day calving interval on 13 progeny!
- ★ Owned with Alta Genetics, Rocky View County, AB and Diamond J Angus Ranch, Mandan, ND.

HOOVER GATLIN



Calved
1-11-18

T33

19200189

[AMF, CAF, D2F,
DDF, M1F, NHF,
OHF, OSF, RDF]

CED	BW	WW	YW	SC	DOC	HP	CEM	MILK	MB	RE	FAT
+4	+1.4	+81	+143	+1.16	+27	+14.3	+3	+28	+.56	+.30	+.083
		2%	1%	25%	10%	15%		25%			

- ★ Gatlin was the 4th top weaning weight bull of his crop at 847 pounds, and a standout phenotypically. Gatlin had a 1407 pound YW, YR 112, IMF 4.48, ratio 140, ribeye 14.1". He is big middled, super

\$M	\$F	\$B	\$C
+59	+86	+124	+220

EF Commando 1366
BALDRIDGE 38 SPECIAL
Baldrige Isabel Y69

Connealy Commander
ERICA OF ELLSTON P44
Erica of Ellston L5

EF Complement 8088 #
Riverbend Young Lucy W1470
Styles Upgrade J59 #
Baldrige Isabel T935
Connealy Consensus #
Gespa of Conanga 9380
Connealy Counselor #
Erica of Ellston G366 #

SEMEN \$20 CERTIFICATES \$33

thick, stout, and big quartered. He comes from the phenomenal Erica family that has put 8 bulls in 6 different studs!

- ★ Dam P44 is a stout, deep bodied female with a superior udder and a 345 day calving interval. P44 also ties as the 7th top indexing cow of the herd with 3-110 WR! P44 entered the donor pen this spring. Her 2019 calf by Entice is vying to be our 2020 lead-off bull!
- ★ Grandam L5 now works as a donor cow for Baldrige Bros. Read about her on page 8 under her son, Hoover Cut Above P427.
- ★ Gatlin will sire stout, growthy feeder calves, and still have beefy daughters with lots of forerib, capacity, and excellent udders.
- ★ Owned with Alta Genetics, Rocky View County, AB.

HOOVER TOP NOTCH P409



Calved
8-09-15

P409

18470330

[AMF, CAF, D2F,
DDF, M1F, NHF,
OHF, OSF, RDF]

CED	BW	WW	YW	SC	DOC	HP	CEM	MILK	MB	RE	FAT
+10	-.6	+70	+125	+.14	+22	+18.2	+8	+31	+.43	+1.02	-.043
25%	15%	10%	10%		25%	1%		15%		3%	3%

- ★ Top Notch was the \$33,000 top-selling bull in our 2017 auction. He came to auction with a phenomenal set of credentials and a phenotype to match. He was a member of the "Fab Five", the set of

\$M	\$F	\$B	\$C
+71	+112	+167	+288
20%	5%	10%	4%

Bruns UpperCut 610
BRUNS TOP CUT 373
Dakota Miss 669 Baf #

Connealy Counselor #
ERICA OF ELLSTON L5
Erica of Ellston G366 #

Sitz Upward 307R #
Dakota Ann 565 BAF
Mohnen Brushpopper 295 #
Dakota Miss 1785 Baf #
Connealy Mentor 7374 #
Jaze of Conanga 234
SydGen C C & 7 #
Erica of Ellston D184

SEMEN \$25 CERTIFICATES \$40

5 flush brothers that averaged \$23,800! Top Notch was noted by many as the neatest phenotype bull of the flush.

- ★ Top Notch's first calves were weaned in the fall of 2018, and the 2nd high weaning weight bull of the Hoover crop was sired by him! We are very pleased with the phenotype of these calves. Top Notch will add some guts & girth to his daughters – save every one he makes!
- ★ Donor dam L5 is one of our favorites – please read about her on page 8 under Top Notch's flush brother, Cut Above. Read about grandam G366 on page 8 under Counselor N29.
- ★ Owned with Baldrige Bros., North Platte, NE; Select Sires, Plain City, OH; and Ray Sikes, Pritchett, CO.

HOOVER CUT ABOVE P427



Calved
8-17-15

P427

18470294

[AMF, CAF, DDF, M1F,
NHF, OHF, OSF]

CED	BW	WW	YW	SC	DOC	HP	CEM	MILK	MB	RE	FAT
+12	-2.0	+54	+104	+85	+20	+18.3	+12	+36	+.70	+1.04	-.029
10%	4%				30%	1%	15%	3%	25%	2%	10%

\$M
+51
\$F
+91 30%
\$B
+157 15%
\$C
+255 20%

Bruns Uppercut 610
BRUNS TOP CUT 373
Dakota Miss 669 Baf #

Connealy Counselor #
ERICA OF ELLSTON L5
Erica of Ellston G366 #

Sitz Upward 307R #
Dakota Ann 565 BAF
Mohnen Brushpopper 295 #
Dakota Miss 1785 Baf #
Connealy Mentor 7374 #
Jaze of Conanga 234
SydGen C C & 7 #
Erica of Ellston D184

SEMEN \$20 CERTIFICATES \$40

- ★ If you are looking for a super calving ease bull to save replacement daughters with superior udder quality and more eye appeal and fleshing ability, check out Cut Above! His first daughters at Hoover Angus will calve in the spring of 2020, and they are arguably the best phenotype females among the bred heifers.



Blackbird of Ellston T162
Cut Above Daughter
Sells February 4, 2020



Queen of Ellston T171
Cut Above Daughter
Sells February 4, 2020

- ★ Cut Above was the third top-selling bull at \$24,000 in our 2017 auction. Cut Above was a member of the "Fab Five", the set of 5 flush brothers that averaged \$23,800! This flush led off our sale, and for good reason. Flush brother Hoover Top Notch P409 was the top-selling bull of this sale at \$33,000.
- ★ Donor dam L5 now serves as a donor for Baldrige Bros. L5's first year in North Platte, she weaned an 842 pound heifer calf to ratio 107 in a small contemporary group of donor cow's calves! This heifer went on to sell 1/2 interest in Denver for \$35,000!
- ★ During her tenure here, L5 produced a \$22,000 daughter and produced another son in stud, Hoover Ambition for \$30,000 to Alta Genetics.
- ★ L5 was the standout heifer of her crop – she was the #1 adjusted weaning weight, #1 adjusted yearling weight heifer at 779 lbs., WR 116, YW 1160 lbs., YR 114. She turned in a superior scan with a 7.05 IMF, ratio 119, and a 14.6" ribeye, ratio 119. Among 88 contemporaries, she had the 5th largest ribeye scan.
- ★ Pathfinder grandam G366 is the dam of Hoover Counselor N29 – read more about N29 and G366 below.
- ★ Owned with Accelerated Genetics, Plain City, OH and Hart Farms, Frederick, SD.

HOOVER COUNSELOR N29



Calved
1-08-14

N29

17879330

[AMF, CAF, D2F,
DDF, M1F, NHF,
OHF, OSF, RDF]

CED	BW	WW	YW	SC	DOC	HP	CEM	MILK	MB	RE	FAT
+10	-1.0	+61	+114	+1.56	+21	+18.2	+6	+30	+.75	+.80	-.006
25%	15%	30%	20%	10%	25%	1%		20%	20%	15%	25%

\$M
+60
\$F
+106 10%
\$B
+168 10%
\$C
+278 10%

Connealy Mentor 7374 #
CONNEALY COUNSELOR #
Jaze of Conanga 234

SydGen C C & 7 #
ERICA OF ELLSTON G366 #
Erica of Ellston D184

G A R Retail Product #
Executa of Conanga 939 #
Connealy Lead On #
Jaycee of Conanga 233
S A F Connection #
SydGen Forever Lady 4087
Woodhill Statesman 54K-90N #
Erica of Ellston B235 #

SEMEN \$25 CERTIFICATES \$40

- ★ N29 originally sold through the 2015 Hoover sale for \$23,000 to Steve Borns as the second top-selling bull. In Steve's dispersal sale in 2017, N29 was purchased by Select Sires for \$39,000!
- ★ N29 is a full brother to the Erica of Ellston L5 cow that now serves as a donor at Baldrige Bros. Read about her in Cut Above's footnote above.
- ★ Pathfinder donor dam G366 is likely the best cow that has ever



Erica of Ellston L5
Full Sister to N29
Dam of Top Notch and
Cut Above



Erica of Ellston G366
Dam of N29
Grandam of Top Notch
and Cut Above

- been bred, born, and raised here in our 92-year history.
- ★ G366 maintains a perfect 365 day calving interval on her 8 natural progeny, which includes stealing flushes four different years! G366 is now 11 years old, and her udder and foot structure is still phenomenal. She records 8-98 BWR, 8-107 WR, and 6-108 YR.
- ★ G366 has brought a total of 10 featured progeny to auction including one that was the #1 adjusted weaning weight bull of his crop, and her 13 progeny have grossed over \$178,000 to average \$13,712.
- ★ A daughter of G366 is the #1 indexing cow of the entire Hoover herd, one is the 6th top indexing cow, and two granddaughters are the 7th and 14th top indexing cows. G366's five daughters in the herd have an average 108 WR on their progeny! Three daughters of G366 have earned Pathfinder honors. G366 daughters produced the two lead-off bred heifers in our 2018 auction, selling for \$48,000 and \$22,000!
- ★ G366 herself weaned at 716 lbs., WR 120 to be the 4th top weaning weight heifer of her crop and went on to post a 1020 pound yearling weight. She scanned a 6.79 IMF, ratio 131 and an 11.5" ribeye, ratio 115. As a yearling heifer, G366 was one of the top 10 WW EPD females in the breed!
- ★ G366's great grandam V65 is the grandam of Hoover Dam. This Erica cow family has put 8 bulls in 6 different AI studs.
- ★ Owned with Select Sires, Plain City, OH and Borns Angus, Hazel, SD.

JAR INCREDIBLE 6104 808



Calved
1-26-18

808

19273962

[AMF, CAF, D2F,
DDF, M1F, NHF,
OHF, OSF, RDF]

CED	BW	WW	YW	SC	DOC	HP	CEM	MILK	MB	RE	FAT
+7	-4	+74	+127	+1.02	+22	+15.0	+9	+25	+57	+66	+014
	20%	5%	10%		25%	10%					

★ Incredible was the lead-off, top-selling bull in the 2019 Jallo Angus Sale at \$17,000. This 7 frame bull is one of the most attractive

\$M	+64
\$F	
\$B	+95 20%
\$C	+146 25%
\$C	+253 25%

Musgrave Invasion
PANTHER CR INCREDIBLE 6704
Panther Cr JH Blackbird 409

TC Total 410 #
JAR ERICA 6104
JAR Ava Lee 048 3202

MCATL Pure Product 903-55 #
MCATL Evergreen 619-K27T
Apex Windy 078 #
Panther Cr JH Blackbird 221
Bon View New Design 208 #
TC Erica Eileen 2047
J A R Mega Bucks 9155
J A R Erica 1159

SEMEN \$25 CERTIFICATES \$40

bigger bulls we have found in recent times. He serviced cows this summer, held his flesh well, and will clean-up the fall bred heifers selling in our February 4, 2020 sale.

- ★ Incredible's performance data: BW 80 lbs., WW 854 lbs., WR 117, YW 1500 lbs., YR 114, scrotal 37.9 cm.
- ★ One of the things we liked most about this bull was his functional, highly productive dam that is 13 years old and going strong! She records 10-104 WR, 10-111 YR and is still excellent footed. Jallo report, "She is one of our most productive cows who always weans off one of the heaviest calves. She and her daughters are beautifully uddered. Five sons have averaged \$9300!"

SYDGEN SIZZLE



Calved
1-9-15

5113

18170011

[AMF, CAF, D2F,
DDF, M1F, NHF,
OHF, OSF, RDF]

CED	BW	WW	YW	SC	DOC	HP	CEM	MILK	MB	RE	FAT
+13	+1.0	+62	+113	+1.91	+31	+15.4	+8	+29	+46	+46	+021
10%		25%	20%	3%	3%	10%		20%			

★ Sizzle was the \$30,000 co-top selling bull of the fall 2015 SydGen Sale. He is a slick haired, deep bodied, level topped bull with excellent scrotal development. Sizzle's individual data: BW 78 lbs., WW 768 lbs., WR 108, YW 1501 lbs., YR 110, yearling scrotal 41.77 cm, frame score 6.4. He scanned a 17.5" ribeye to ratio 109.

\$M	+57
\$F	
\$B	+77
\$C	+118
\$C	+210

Connealy Heat 0243 #
CONNEALY COOL 39L
JMC Jeena Allie 8345 5399 #

Pine Ridge Hammer S322 #
WK HAZEL 9201
ALC Hazel L12L

Connealy All Around #
Bunt Lanna of Conanga 556
H A Power Alliance 1025 #
Jeena of Conanga 357
Hyline Right Time 338 #
Belmont Lady 9015 3313 #
S V F Bandolier
Alc Hazel K14H #

SEMEN \$20 CERTIFICATES \$40

- ★ He is a super long bodied bull to pack in extra pounds. He is a superior disposition bull whose progeny reflect this important trait. Sizzle held his condition well during his first breeding season and he continually stays fleshy as a mature bull.
- ★ Sizzle's first calves were weaned in the fall of 2017, and there were definitely some standouts. A Sizzle son out of a first calf heifer was the 9th top weaning weight bull at 861 pounds. Sizzle brings large scrotal size to his sons and an outcross pedigree to the Hoover program. His first daughters in production now are nice, tight uddered females that are super slick haired. We expect them to work well on fescue.
- ★ Sizzle's dam records 5-106 WR and 4-107 YR.
- ★ Owned with Sydenstricker Genetics, Mexico, MO.

CONNEALY COMMANDER



Calved
2-20-13

3846

17585764

[AMF, CAF, DDF,
NHF, OHF, OSF]

CED	BW	WW	YW	SC	DOC	HP	CEM	MILK	MB	RE	FAT
-6	+4.2	+79	+127	-.03	+11	+12.3	+1	+25	+10	+81	-.035
		2%	10%			30%				15%	5%

★ Every calf crop at Hoover Angus sees tremendous growthy Commander calves. In the spring 2018 calf crop at Hoover Angus, the Commander sons and daughters were the most consistently

\$M	+58
\$F	
\$B	+98 20%
\$C	+132
\$C	+229

KMK Alliance 6595 I87 #
CONNEALY CONSENSUS #
Blinda of Conanga 004

Rito 6EMA of 4L3 Emblazon #
GESPA OF CONANGA 9380
Gossipa of Conanga 787

Sitz Alliance 6595 #
G A R Ext 916 #
Rito 616 of 4B20 6807 #
Blenda of Conanga 129
O C C Emblazon 854E #
Rita 4L3 of 2536 208
Millers Bullseye J373 #
Cossipana of Conanga 788

SEMEN \$25 CERTIFICATES \$33

high weaning weight sire group. Commander sired the top ratioing sire group in both the bull and heifer calves in our 2015 spring crop.

- ★ Commander daughters in production are stout, easy fleshing females with ideal udder structure and teat size.
- ★ Commander sons were the top-selling sire group in our 2016 sale averaging \$11,469! Sons are extremely stout cattle with added frame, muscle, hind quarter, and pounds.
- ★ Commander was the \$100,000 top-selling bull in Connealy's 2014 sale. He weaned at 877 pounds, WR 115, YW 1514 lbs., YR 121.
- ★ Owned with Alta Genetics, Rocky View County, Alberta and KDS Angus, Lenox, IA.

HOOVER DAM



Calved
1-25-08

G18

#16124994

[AMF, CAF, D2F, DDF,
M1F, NHF, OHF, OSF]

CED	BW	WW	YW	SC	DOC	HP	CEM	MILK	MB	RE	FAT
+8	-.3	+46	+88	+.84	+21	+9.6	+8	+25	+.79	+.76	-.010
	20%				25%				20%	15%	20%

★ Hoover Dam was the ORIGen semen sales leader in 2012, 2013, 2014, 2016, and 2017. As of his passing in 2019, 233,396 units of semen were sold or used by owners of the bull and 15,406 A.I. certificates sold to gross \$5,131,015. Although there are no official public records with which to compare, Dick Beck, Vice President of Sales and Marketing at ORIGen, says "Hoover Dam is the only

\$M	+54
\$F	+103 15%
\$B	+168 10%
\$C	+272 10%

S A F Connection #
SYDGEN C C & 7 #
SydGen Forever Lady 4087

TC Gridiron 258 #
ERICA OF ELLSTON C124 #
Erica of Ellston V65

SVF Gdar 216 LTD #
S A F Royal Queen 5084
SydGen 1407 Corona 2016 #
S A F Forever Lady 8292
G A R Grid Maker #
TC Blackbird 7049 #
S A Neutron 377 #
Shottish V047

SEMEN \$30 CERTIFICATES \$40

sire in history owned exclusively by Angus breeders to have ever reached or surpassed that sales total."

- ★ Hoover Dam was among the top 10 bulls of the Angus breed for progeny registrations in 2012-2015. Hoover Dam has been used on four continents.
- ★ Hoover Dam has established a reputation for calving ease, muscle, docility, improved foot structure, and maternal strength. He is a renowned sire for producing highly productive, functional, impeccable uddered females.
- ★ Owned with A&B Cattle, Bassett, NE; AJC Angus, Baxter, IA; Basin Angus, Hobson, MT; Craigmere Farm, Schomberg, Ontario; Express Ranches, Yukon, OK; EZ Angus Ranch, Porterville, CA; Gary Wall, Billings, MT; Sioux Pass Livestock & Grain, Lodge Grass, MT; and Stevenson's Diamond Dot, Hobson, MT.

CONNEALY IMPACT



Calved
1-29-13

3274

17585606

[AMF, CAF, D2F,
DDF, M1F, NHF,
OHF, OSF, RDF]

CED	BW	WW	YW	SC	DOC	HP	CEM	MILK	MB	RE	FAT
+14	-.4	+59	+111	+1.16	+24	+14.1	+13	+27	+.27	+.76	-.006
4%	20%		25%	25%	15%	15%	10%			15%	25%

★ Connealy Impact is a sire that will transmit added frame, length, and good foot quality. He puts a pleasing profile in his progeny, especially for a larger framed, calving ease bull. Impact exhibits muscle in his

\$M	+67 30%
\$F	+87
\$B	+126
\$C	+230

Connealy Reflection #
CONNEALY IMPRESSION #
Pearl Pammy of Conanga 194

Connealy Onward #
ELZA OF CONANGA 8265 #
Ella of Conanga 5605

Bon View New Design 878 #
Happy Grill of Conanga 6260
Vermilion Dateline 7078 #
Pearl Jam of Conanga 6114
Connealy Lead On #
Altune of Conanga 6104
G A R Grid Maker #
Eilaleaf of Conanga #

SEMEN \$25 CERTIFICATES \$40

top, thickness through his rear and has a nice long stride.

- ★ Impact sure has the ability to put pounds in his progeny, as numerous calves in calf crops have done a tremendous job. In our fall 2016 calf crop, the #1 and #2 adjusted weaning weight bull calves were both sired by Impact!
- ★ Impact's daughters in production are heavy milking females with excellent teat size. An Impact daughter that is the 2nd top indexing cow of the entire Hoover herd raised the #1 adjusted weaning weight bull calf of our spring 2019 crop.
- ★ Impact's dam is a very square made, deep bodied, good footed, nice uddered female, and one of the biggest, stoutest cows in the Connealy herd. She has a tremendous record with 9-108 WR.

MOORE GOLD MINE



Calved
2-13-14

413

17878954

[AMF, CAF, D2F,
DDF, M1F, NHF,
OHF, OSF, RDF]

CED	BW	WW	YW	SC	DOC	HP	CEM	MILK	MB	RE	FAT
+6	+2.7	+62	+111	+2.07	+26	+7.6	+2	+26	+.14	+.41	-.019
		25%	25%	2%	10%						15%

★ Gold Mine is a really long-spined, large framed, correctly made,

\$M	+67 30%
\$F	+91 30%
\$B	+120
\$C	+223

Lemar Dakota Gold 18T
MOORE GOLD 710
Moore Bando 1961 510 #

Sitz Upward 307R #
MOORE UPWARD 623 #
Moore Jet Service 918

Mytty In Focus #
Lemar Peggy 74R
H S A F Bando 1961 #
Moore 12-Leadtime 210
Connealy Onward #
Sitz Henrietta Pride 81M
LCC Jet Service 6965K
55 Dividend of Moore 718

eye-catching, high performing bull with excellent feet.

- ★ Gold Mine's calves are definitely high performing. A standout Gold Mine son (John's favorite bull of our spring 2016 calf crop) was the 4th top weaning weight bull at 896 pounds! Gold Mine progeny have added style and eye appeal. His daughters are deep, broody, and are making beautiful females.
- ★ As a yearling, Gold Mine was turned out with cows and settled his females in the early part of the breeding season and every single female was pregnant. He is a large scrotal bull.
- ★ Owned with Moore Angus, Artesian, SD.

FREYS COWBOY LOGIC



★ As the 2019 lead-off bull in the Frey carload of bulls in Denver, Cowboy Logic drew lots of attention in the yards! He has style, muscle, power and tremendous performance in a calving ease package. Born at 75 pounds, he had a 781 pound WW, YW 1647 lbs., ADG 5.41 lbs/day, WDA 4.32 lbs/day, IMF 4.61, ribeye 14.1". He offers a very solid 50K for the economically important traits: CED 7, BW 28, WW 16, YW 1, CEM 6, CW 18, RE 21.

★ His dam records a 360 day calving interval and 4-96 BWR, 4-105 WR, 3-106 IMF ratio and 3-105 ribeye ratio. His grandam serves as a donor cow and produced Freys Opportunity 148A.

Calved 1-27-18 181F 19256275											
CED	BW	WW	YW	SC	DOC	HP	CEM	MILK	MB	RE	FAT
+17	-.4	+70	+130	+.51	+17	+13.0	+16	+22	+.26	+.51	-.008
1%	20%	10%	5%			25%	1%				25%

\$M
+54
\$F
+106 10%
\$B
+141 30%
\$C
+237

HA Outside 3008
HA COWBOY UP 5405
HA Blackcap Lady 1602 #

WK Bobcat #
F A R PRINCESS 148Z
F A R Princess 214X #

KG Solution 0018
HA Ever Lady 1575 #
Sitz Upward 307R #
HA Blackcap Lady 5515
Connealy Right Answer 746 #
WK Miss Angus 7127 #
Sitz Upward 307R #
F A R Princess 202T

SEMEN \$25 CERTIFICATES \$40

- ★ Cowboy Logic saw significant usage at Hoover Angus in the spring of 2019. He was purchased with Select Sires for \$70,000.
- ★ Australian visitors who viewed Cowboy Logic breeding heifers were impressed with the bull's structure and were especially complimentary of the angle of his pasterns. Cowboy Logic held his condition very well servicing heifers as a yearling bull.
- ★ Bred heifers will carry Cowboy Logic's service in our February 4, 2020 sale.
- ★ Owned with Frey Angus Ranch, Granville, ND and Select Sires, Plain City, OH.

92 Years of Quality Angus Cattle



Herd Founders
Walt & Sadye
Hoover



Second Generation
John & Barb
Kiburz



Third Generation
David & Joy
McFarland



Fourth Generation
Andrew & Landi
McFarland-Livingston



Potential Fifth Generation
Gwen & Ty

Same Family...

Same Farm...

Same Mission...

Superior Quality

We are proud of our history, treasure the present, and set our sights on the future!