

HOOVER *Angus*

2016 Semen & Herd Sire Directory

Hoover Dam



Connealy Counselor



Hoover Hawkeye



Mogck Bullseye



Hoover Elation



Hoover Inspiration



Basin Excitement



Hoover No Doubt



Connealy Commander



John & Barb Kiburz
1044 255th Ave.
Tingley, IA 50863
641-344-3990

David & Joy McFarland
2731 Squirrel Ave.
Ellston, IA 50074
641-772-4479

Andrew & Landi McFarland-Livingston
Ellston, IA 50074 • landi@hooverangus.com
641-344-7684

www.hooverangus.com
www.facebook.com/HooverAngusFarm

A supplement to the February 2, 2016 Hoover Angus sale book and the January 2016 Angus Journal. EPDs current as of 12-1-15.

HOOVER HAWKEYE



Calved 2-15-13 M140

17603627

CED	BW	WW	YW	RADG	SC	DOC	CEM	MILK	MB	RE	FAT
+8	+1.0	+78	+140	+31	+79	+33	+10	+30	+63	+1.23	+0.17
30%		1%	1%	3%		1%	30%	10%	25%	1%	

\$W
+87.56 1%
\$F
+125.09 1%
\$G
+40.74 15%
\$B
+185.52 1%

MOGCK Sure Shot
MOGCK BULLSEYE
 Mogck Mary 1255
 SydGen C C & 7 #
MISS BLACKCAP ELLSTON K97
 Miss Blackcap Ellston G278

Mytty In Focus #
 Mogck Black Lass 2065
 K C F Bennett Coalition SCC #
 Mogck Mary C 1757
 S A F Connection #
 SydGen Forever Lady 4087
 Woodhill Statesman 54K-90N #
 Miss Blackcap Ellston D154 #

SEMEN \$30 CERTIFICATES \$ASK

- ★ Hoover Hawkeye, the #1 \$W and \$B combination son of the \$192,000 Mogck Bullseye in the American Angus Association database, was the \$43,000 top-selling bull in our 2014 sale.
- ★ When considering Hawkeye's excellent BW EPD to Ribeye EPD spread and his high Docility, only one other sire with his accuracy or greater can achieve his EPD superiority!
- ★ Hawkeye was used heavily in the 2014-2015 AI program at Hoover Angus. His first calves at Hoover Angus were born light and are shining stars - there are several standouts in our spring 2015 crop. Hawkeye's first calf crop has exceeded our expectations! The Hawkeye heifers are Landi's favorite sire group. Hawkeye sired the #1 adjusted weaning weight female of the 2015 Hoover crop. Two other Hawkeye daughters were among the top 10 weaning weight heifers. The #1 adjusted weaning weight ET heifer was also sired by Hawkeye. Our first Hawkeye progeny will be featured in our February 2, 2016 production sale, four of which are photo features!
- ★ Three Trees Ranch is one of the most progressive, data-driven seedstock operations in the world, and they have genomically tested Hawkeye progeny. Results are as follows on 48 Hawkeye calves:
 - CED EPD above breed average
 - WW EPD top 3%
 - YW EPD top 1-2%
 - Marb EPD top 15-20%
 - RE EPD top 1-2%
 - \$W top 4%
 - \$B top 1%
- ★ Where else in America can you find a sire group of calves that have an AVERAGE \$Beef in the top 1% of the breed! Congratulations Three Trees on the selection of an outstanding sire and a great first calf crop!
- ★ Hawkeye is the result of 85 years of dedicated Angus breeding, backed by 11 generations of Blackcap Ellston females produced by four generations of the Hoover family. He had an actual birth weight of 65 pounds as a heifer's first calf, an adjusted weaning weight of 844 pounds for a ratio of 111, an adjusted yearling weight of 1,505 pounds for a ratio of 110, an IMF ratio of 109 and an EXCEPTIONAL adjusted yearling ribeye measure of 19.1 square inches for a ratio of 119. This complements his elite HD50K percentile rankings of top 3% for Docility, 3% for WW, 1% for YW, 8% for CW and 8% for Ribeye.
- ★ Hawkeye is a thick, stout made bull that has a leg on all four corners.



Lady Ida of Ellston P63
 Hawkeye Daughter
 Maternal Sister to Hoover Inspiration



Hoover Hawkeye P178
 Hawkeye Son
 Sells February 2, 2016



Erica of Ellston P168
 Hawkeye Daughter
 Sells February 2, 2016



Hoover Hawkeye P125
 Hawkeye Son
 Sells February 2, 2016



Miss Blackcap Ellston K98
 \$30,000 Twin Sister to
 Hawkeye's Dam

He excels for body depth and rib shape. His tremendous muscle comes from both sides of the pedigree, and is evident in the three generations of Blackcap Ellston females that precede him. Every great sire produces a son greater than himself, and Hawkeye may be the son of Bullseye that realizes the dream!



Vintage Blackbird 5197
 \$60,000 Hawkeye Daughter

- ★ Hawkeye's dam is a clean fronted, beautifully made CC&7 female with a nice udder and ideal teat size. She now records 3-96 BWR and 3-103 WR.
- ★ Grandam G278 records 4-108 WR and produced the #1 adjusted WW bull in our fall 2014 crop that will be featured in our February 2, 2016 production sale.
- ★ Semen is available at ORigen for \$30/unit and \$100/certificate, and he is eligible for volume discounts. Buyers of AI certificates from Hawkeye that provide documentation that the calf is registered with an AI certificate and have been genomically tested with one of the 50K products available from AGI will be given a \$50 rebate/credit to offset the cost of the genomic testing.
- ★ Owned with Three Trees Ranch, Sharpsburg, GA.

**For more detailed information
 on Hoover herd sires, visit
www.hooverangus.com/herdsires.php**

MOGCK BULLSEYE



Calved 1-27-11 691 17102085 [AMF, CAF, DDF, M1F, NHF, OHF]

CED	BW	WW	YW	RADG	SC	DOC	CEM	MILK	MB	RE	FAT
+0	+2.7	+79	+136	+32	+1.37	+34	+7	+34	+59	+91	+0.24
		1%	1%	2%	15%	1%		3%	30%	5%	

\$W	+90.47	1%
\$F	+117.16	1%
\$G	+36.78	25%
\$B	+162.57	3%

Mytty In Focus #	S A F Focus of E R #
MOGCK SURE SHOT	Mytty Countess 906
Mogck Black Lass 2065	S A V Pay Day 3261
K C F Bennett Coalition SCC #	Mogck Black Lass C2502
MOGCK MARY 1255	Sitz Alliance 6595 #
Mogck Mary C 1757	Pleasant Pill of Conanga #
	Marcys 95 734 6 #
	Mogck Mary C 1234

SEMEN \$30 CERTIFICATES \$40

- ★ NO high accuracy sire can meet or exceed Bullseye's combination of superior Docility, \$W and \$B!
- ★ A Bullseye son was the #1 adjusted weaning weight bull of the 2015 Hoover Angus crop (non-ET) and was one of five Bullseye sons in top 15 weaning weight bulls. Bullseye certainly lives up to his top-of-the-breed growth EPDs!
- ★ Bullseye progeny in our 2015 sale were the hit of the auction, with 32 Bullseye sons averaging \$10,609! Bullseye sons are very popular because of their thickness, muscle, and shape that is very evident in Bullseye himself. Bullseye sons topped several bull sales last spring.
- ★ The Bullseye progeny have been gentle to handle, and will be a great fit for cattlemen who have used CC&7 genetics and want to continue with excellent disposition bulls.
- ★ The first Bullseye daughters have now weaned their first calves. Daughters in 33 herds have an average 102 WR on their progeny. Reports about Bullseye daughters have been excellent - very nice



Hoover Bullseye P16
Bullseye Son
Sells February 2, 2016



Hoover Bullseye P24
Bullseye Son
Sells February 2, 2016



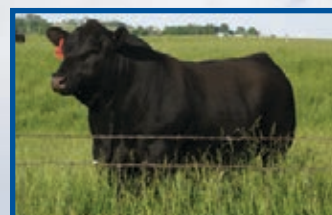
Miss Erica Ellston N201
Bullseye Daughter
Sells February 2, 2016



Hoover Bullseye N6
\$10,750 Bullseye Son



Keymura Katy Ellston M55
Bullseye Daughter



Bullseye in the Hoover Angus breeding pasture, May 2012

udders and great dispositions.

- ★ At Hoover Angus, we know that "Good bulls don't cost, good bulls pay," and we partnered with KDS Angus and Accelerated Genetics to have the winning bid at \$192,000 when Bullseye sold. He is one of the few young bulls of the breed that sold a significant amount of semen before he came to auction at 14 months of age. Over 1700 progeny are recorded through AHIR in over 120 herds, giving Bullseye significant accuracy on his tremendous growth EPDs.
- ★ Bullseye was the #1 yearling weight and #2 weaning weight bull of the Mogck crop, and scanned the 2nd biggest ribeye and 2nd highest IMF! Bullseye is a powerhouse 6.5 frame bull and has a great track record for producing high quality semen.
- ★ Owned with KDS Angus, Lenox, IA; Mogck & Sons, Olivet, SD; and Accelerated Genetics, Baraboo, WI.

SYDGEN SIZZLE



Calved 1-9-15

5113

18170011

CED	BW	WW	YW	RADG	SC	DOC	CEM	MILK	MB	RE	FAT
+12	+1.2	+70	+122	+25	+1.95	+14	+11	+27	+95	+93	+0.51
5%		1%	1%	10%	2%		20%	25%	5%	4%	

\$W	+74.46	2%
\$F	+91.45	1%
\$G	+41.97	15%
\$B	+175.81	1%

Connealy Heat 0243
CONNEALY COOL 39L
JMc Jeena Allie 8345 5399

Pine Ridge Hammer S322
WK HAZEL 9719
ALC Hazel L12L

Connealy All Around #
Bunty Lanna of Conanga 556
H A Power Alliance 1025 #
Jeena of Conanga 357
Hyline Right Time 338 #
Belmont Lady 9015 3313 #
S V F Bandler
Alc Hazel K14H #

- ★ \$30,000 co-top selling bull at the 2015 SydGen event. Sizzle is an outcross to a vast majority of the breed, without sacrifice in any economically important area. He puts together a very unique set of EPDs and flawless phenotype, giving him unlimited mating potential.
- ★ Sizzle is an excellent disposition bull that has been a standout of the SydGen crop for several months. He had a 78 pound birth weight and weaned at 768 pounds, WR 108.
- ★ Sizzle's dam is a larger framed, superior ordered cow with 3-107 WR.
- ★ Grandam is the dam of ALC Big Eye D09N.
- ★ Owned with Sydenstricker Genetics, Mexico, MO.

HOOVER DAM



Calved 1-25-08 G18 #16124994 [AMF, CAF, DDF, M1F, NHF, OHF]

CED	BW	WW	YW	RADG	SC	DOC	CEM	MILK	MB	RE	FAT
+8	-3	+50	+97	+26	+1.02	+20	+7	+27	+75	+1.14	-.034
30%	15%		30%	10%		20%		30%	15%	1%	5%

\$W	
+62.21	15%
\$F	
+61.34	20%
\$G	
+50.95	2%
\$B	
+131.31	20%

S A F Connection #
SYDGEN C C & 7 #
 SydGen Forever Lady 4087
 TC Gridiron 258 #
ERICA OF ELLSTON C124 #
 Erica of Ellston V65

SVF Gdar 216 LTD #
 S A F Royal Queen 5084
 SydGen 1407 Corona 2016 #
 S A F Forever Lady 8292
 G A R Grid Maker #
 TC Blackbird 7049 #
 S A Neutron 377 #
 Shottish V047

SEMEN \$26 CERTIFICATES \$40

- ★ Hoover Dam has left his mark on the nation's cow herd as being one of the most proven, predictable sires of the breed with the hard to find combination of calving ease, muscle, carcass, docility, and phenomenal daughters. Hoover Dam has been among the top 10 bulls of the breed the past four years for progeny registrations and has earned Pathfinder honors! He now has over 12,700 progeny through AHIR in over 1300 herds.
- ★ Cattlemen have realized the tremendous value of Hoover Dam daughters for their impeccable udder structure with optimum levels of milk, great manners, moderate mature size, and fleshing ability. Hair coats are slick, which is ideal for fescue tolerance.



Queen of Ellston K11
 Two year-old Hoover Dam
 Daughter



Hoover Dam P75
 Hoover Dam Son
 Sells February 2, 2016



Hoover Dam N216
 \$15,500 Hoover Dam Son



Queen of Ellston L22
 \$11,000 Hoover Dam Daughter

- ★ There is no bull in the breed that can match Hoover Dam's combined CW, Marbling and Ribeye EPDs with his accuracy! Over 5500 progeny in over 600 herds have an average 105 IMF ratio and 101 ribeye ratio.
- ★ Hoover Dam has seen repeated use in large heifer AI projects, due to customer satisfaction for his predictability in calving ease and calf crop uniformity. Progeny offer structural correctness, added thickness, muscle, and eye appeal.
- ★ Pathfinder dam C124 records 6-96 BWR, 6-114 WR, 6-106 YR, 35-100 IMF ratio and 35-102 Ribeye ratio. Her 9 sons to come to auction at Hoover Angus averaged \$13,050; her 4 daughters averaged \$21,075. One-half interest in C124 was purchased by Craigmores Farm for \$45,000.
- ★ A full sister to Hoover Dam working in the Hoover herd raised the 12th top weaning weight heifer calf of our spring 2015 crop.
- ★ Owned with A&B Cattle, Bassett, NE; AJC Angus, Baxter, IA; Basin Angus, Joliet, MT; Craigmores Farm, Schomberg, Ontario; Express Ranches, Yukon, OK; Gary Wall, Billings, MT; Island Cattle Co., Circle, MT; Ray-Mar Ranches, Oakdale, CA; Sioux Pass Livestock & Grain, Lodge Grass, MT; and Stevenson's Diamond Dot, Hobson, MT.

HOOVER HEADLINER J32



Calved
1-30-10

J32

16687543

\$W	
+54.18	30%
\$F	
+61.78	20%
\$G	
+40.65	15%
\$B	
+117.62	30%

S A F Connection #
SYDGEN C C & 7 #
 SydGen Forever Lady 4087
 TC Gridiron 258 #
BLKCP EMPRESS ELLSTON C109 #
 Blkcp Empress Ellston A306

SVF Gdar 216 LTD #
 S A F Royal Queen 5084
 SydGen 1407 Corona 2016 #
 S A F Forever Lady 8292
 G A R Grid Maker #
 TC Blackbird 7049 #
 S A Neutron 44
 Blackcap Empress J350 #

CED	BW	WW	YW	RADG	SC	DOC	CEM	MILK	MB	RE	FAT
+0	+3.6	+58	+104	+17	+2.10	+27	+2	+27	+50	+1.10	-.005
		20%	20%		1%	5%		30%		1%	30%

- ★ Headliner was the \$30,000 top-selling bull in our 2011 auction selling to Select Sires, Plain City, OH. He was the thickest bull of the sale, scanned the #1 ribeye of the auction, and was the 12th top weaning weight bull calf of the crop. He shares the same docility as his sire, CC&7.

- ★ Headliner calves are high growth cattle with muscle, good feet, and good dispositions. They are sound made with a tick more frame.
- ★ C109's first CC&7 son was Hoover G Force, the 5th top WW and #1 adjusted YW bull of his crop. An ET son of C109 was the 3rd top selling bull of our 2012 auction at \$15,000.
- ★ C109 has achieved Pathfinder status with 9-96 BWR, 9-108 WR, 8-108 YR, and 12-110 Ribeye ratio. C109 scanned a 13.4" ribeye. C109 is a moderate-framed, perfect-uddered cow. C109 is the 12th generation Hoover bred-and-owned Blackcap Empress Ellston cow to survive strict culling in Ellston, Iowa.
- ★ Great grandam J350 made the Pathfinder report at 14 years old.
- ★ After initially freezing semen, Headliner had an injury to one testicle, which was later removed. Headliner successfully services cows at Hoover Angus, and currently resides there.

HOOVER INSPIRATION



Calved 1-20-12 L30 17306288 [AMF, CAF, DDF, NHF]

CED	BW	WW	YW	RADG	SC	DOC	CEM	MILK	MB	RE	FAT
+11	-.5	+59	+98	+21	+81	+32	+11	+31	+50	+.93	-.034
15%	15%	20%	30%			1%	20%	10%		4%	5%

\$W
+69.95 10%
\$F
+53.84
\$G
+40.07 15%
\$B
+139.05 15%

S A F Connection #
SYDGEN C C & 7 #
 SydGen Forever Lady 4087
 TC Gridiron 258 #
LADY IDA OF ELLSTON C164 #
 G G Ida 9183 #

SVF Gdar 216 LTD #
 S A F Royal Queen 5084
 SydGen 1407 Corona 2016 #
 S A F Forever Lady 8292
 G A R Grid Maker #
 TC Blackbird 7049 #
 TC Stockman 365 #
 G G Ida 436

SEMEN \$22 CERTIFICATES \$25

- ★ Inspiration was the \$56,000 top-selling bull of our 2013 auction. Inspiration is moderate, extremely thick, big topped, wide based, deep ribbed, correct made, and easy going.
- ★ Inspiration was so named because he is a refreshing change for the breed – he offers the qualities of calving ease, adequate growth genetics with carcass merit in a package that visually and structurally rises to the top. As his dam and full sisters have made phenomenal cows, we expect this to be Inspiration's greatest asset yet.

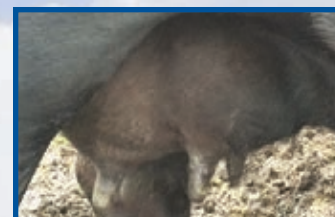


Hoover Inspiration N57
 \$12,000 Inspiration Son



Blackbird of Ellston P96
 Inspiration Daughter

- ★ Pathfinder donor dam C164 will be a cow that goes down in the Hoover history books! Her most noted daughter to date is her \$33,500 sale-topping daughter, H6 – a full sister to Inspiration. C164 records 10-107 WR on her natural progeny and a 362 day calving interval which includes stealing flushes four different years! Her fertility is phenomenal to say the least. Nine sons have averaged over a 15.4" ribeye, and 7 daughters have averaged a 13.0" ribeye. C164 is one of 55 Hoover females that rank in or above the top 1% of the breed for Ribeye EPD.



Inspiration's dam's udder at 11 years of age, 24 hours after weaning her 10th natural calf.

- ★ At 11 years of age, C164's natural calf weaned at 854 pounds to tie as the 12th top adjusted weaning weight bull calf of the 2015 Hoover crop! An ET daughter of C164 topped the ET heifer weaning weight division at 742 pounds!
- ★ A full sister to Inspiration works in the Hoover herd with 3-107 WR. Her first son weaned at 821 pounds and sold for \$7000; her next son sold for \$8500. Her third calf was the 2nd top adjusted weaning weight heifer of the spring 2015 Hoover crop (non-ET)!
- ★ Pathfinder grandam 9183 ended her career with 10-96 BWR, 10-108 WR, 10-105 YR and 3 Pathfinder daughters to her honor! As an 11 year-old cow, she raised a 769 pound bull calf to ratio 113.
- ★ Owned with Alta Genetics, Rocky View County, Alberta, Canada.

HOOVER EMPEROR



Calved 8-17-10

J423

16924687

[AMF, CAF, DDF, NHF]

CED	BW	WW	YW	RADG	SC	DOC	CEM	MILK	MB	RE	FAT
+3	+3.2	+68	+122	+24	+2.30	+30	+7	+38	+72	+.21	+.031
		5%	3%	20%	1%	2%		1%	15%		

- ★ Hoover Emperor was the \$17,000 top-selling bull in the 2012 Hoover Angus Sale. He was renamed Emperor to signify the 13 generations of "Empress Ellston" cows that have stood the test of time at Hoover Angus in Ellston, IA. Emperor's calves show tremendous growth. His first crop of daughters were the #1 ratioing sire group at weaning time in the Hoover heifer crop! His progeny have added frame, growth, stretch, and excellent disposition. Comments from commercial producers who used Emperor comment on the uniformity, growth, and good dispositions of the Emperor progeny.

\$W
+77.97 3%
\$F
+90.77 3%
\$G
+31.08
\$B
+140.24 10%

S A F Connection #
SYDGEN C C & 7 #
 SydGen Forever Lady 4087

TC Friction 5130 #
BLKCP EMPRESS ELLSTON G403 #
 Blkcp Empress Ellston D515 #

SVF Gdar 216 LTD #
 S A F Royal Queen 5084
 SydGen 1407 Corona 2016 #
 S A F Forever Lady 8292
 TC Friction 3275
 TC Barbara 3022
 TC Gridiron 258 #
 Blkcp Empress Ellston A648

SEMEN \$18 CERTIFICATES \$35

- ★ From being the #1 WW bull and #1 YW fall bull of his crop, to being the 3rd top IMF bull, this guy really nails it. He is definitely a high growth bull who can sire the same.
- ★ Dam G403's first three progeny were all the #1 adjusted weaning weight bull or heifer calf of their respective crop! G403 recently weaned the #2 adjusted weaning weight bull of our spring 2015 crop! She now records 5-98 BWR, 5-112 WR, 4-110 YR, and 4-122 IMF ratio! She serves as the herd's 4th top indexing cow.
- ★ G403 weaned at 770 lbs., WR 122, YW 1076 lbs., YR 115. She was the 3rd high WW heifer of her crop and the #1 adjusted YW heifer!
- ★ Pathfinder grandam D515 is one of our most productive cows and records 8-96 BWR, 8-110 WR, and 7-107 YR. She ties as the herd's 8th top indexing cow.
- ★ D515's first son was the top WW bull we have ever produced at 921 pounds!
- ★ Owned with Genex Cooperative, Shawano, WI.

SYDGEN CC&7



Calved
1-13-06

6099

#15330743

[AMF, CAF, DDF,
NHF, OHF]

CED	BW	WW	YW	RADG	SC	DOC	CEM	MILK	MB	RE	FAT
+4	+9	+53	+106	+30	+1.17	+34	+5	+34	+42	+85	-.062
			15%	4%	25%	1%		3%		5%	1%

\$W
+61.15 20%
\$F
+75.53 10%
\$G
+36.37 25%
\$B
+167.87 2%

SVF Gdar 216 LTD #
S A F CONNECTION #
S A F Royal Queen 5084

SydGen 1407 Corona 2016 #
SYDGEN FOREVER LADY 4087
S A F Forever Lady 8292

Traveler 124 G D A R #
G D A R Forever Lady 718
Bon View Bando 598 #
S A F Royal Queen 9022
Bon View New Design 1407 #
V N A R Perfection 142F 180K
S A F Neutron #
S A F Forever Lady 5138

SEMEN \$30 CERTIFICATES \$40

- ★ The breed's docility leader has over 8000 progeny recorded in over 1000 herds. CC&7 was the 4th top sire of the Angus breed for progeny registrations in 2012!
- ★ CC&7 sons have been at the top of the sale order for many years at Hoover Angus, and have been the top-selling sire group many times. One of the top selling bulls in our history, Hoover Inspiration, was a CC&7 son that sold for \$56,000 to Alta Genetics. The top-



Princess of Ellston G25
Pathfinder CC&7 Daughter
Hoover Angus Donor



Erica of Ellston G366
Pathfinder CC&7 Daughter
Hoover Angus Donor

selling female in our history, Hoover Dame, was a CC&7 daughter. CC&7's most famous son, Hoover Dam, has now exceeded CC&7 in number of progeny though AHIR.

- ★ CC&7 daughters are great cows to work with at calving time. They have nice udders – good udder attachment, level udders, and a small teat size. For three years running, a CC&7 daughter has weaned the #1 adjusted weaning weight heifer calf of the spring Hoover crop. In the Hoover cow herd, seven of the top fifteen indexing cows are sired by CC&7, including the #1 indexing cow of the entire herd! A recent visitor to Hoover Angus that viewed the majority of the spring calving herd stated, "If I were to begin a new herd today, I would use CC&7 as my base."
- ★ CC&7's HP EPD ranks in the top 1% of the breed.
- ★ CC&7's disposition is truly second-to-none, and we've coined the phrase the "CC&7 Effect" – when a certain percentage of the animals in a group are sired by CC&7, the temperament of the entire group is calmed. The more restless animals in a group become more docile because of their docile CC&7 contemporaries. This is a testament to CC&7's position as the longest standing top docility Angus bull in America!
- ★ CC&7 will definitely leave a positive, long-lasting imprint in the Hoover cow herd and America's beef herd!
- ★ Owned with Sydenstricker Genetics, Mexico, MO.

BRUNS TOP CUT 373



Calved
1-21-13

373

17680548

[AMF, CAF, DDF, NHF]

CED	BW	WW	YW	RADG	SC	DOC	CEM	MILK	MB	RE	FAT
+14	+5	+61	+120	+27	+1.11	+26	+14	+31	+51	+66	-.015
4%	30%	15%	4%	10%	25%	5%	3%	10%		20%	20%

\$W
+62.67 15%
\$F
+85.84 4%
\$G
+34.22 30%
\$B
+152.84 5%

Sitz Upward 307R #
BRUNS UPPER CUT 610
Dakota Ann 565 BAF

Mohnen Brushpopper 295 #
DAKOTA MISS 669 BAF #
Dakota Miss 1785 Baf #

Connealy Onward #
Sitz Henrietta Pride 81M
TC Freedom 104 #
Dakota Ann 24M S D G
Mohnen Brushpopper 353
Mohnen Jilt 1283
TC Freedom 104 #
Dakota Mis 697 S D G

SEMEN \$20 CERTIFICATES \$40

- ★ Top Cut was our \$28,000 selection from the 2014 Bruns sale, where he was the second top-selling bull. He was the most complete, bigger framed bull we saw in the spring of 2014. We were also attracted to this bull because of his excellent feet and



Blackcap Empress
Ellston P11
Top Cut Daughter



Hoover Top Cut P27
Top Cut Son
Sells February 2, 2016

large pelvic area. This deep, soggy bull serviced cows in the summer of 2014 and held his flesh well for a yearling bull. We flushed one of our top donors to Top Cut, and these progeny that will come to auction with the first set of Top Cut progeny on February 2, 2016 look excellent.

- ★ His first set of calves were low birth weight and exhibit added frame. Top Cut was our heaviest used sire in our fall 2015 calf crop.
- ★ Top Cut had solid performance data: BW 80 lbs., WW 795 lbs., WR 105, YW 1429 lbs., YR 106. He scanned a 4.85 IMF, ratio 124 and a 16.5" ribeye, ratio 111. Before we purchased Top Cut, we viewed his dam, a recent Pathfinder, who records 3-98 BWR and 3-105 WR. She is an excellent footed cow with a nice udder and perfect teat size.
- ★ Owned with Bruns Angus, Madison, SD.



Hoover Top Cut P14
Top Cut Son
Sells February 2, 2016

CONNEALY COMMANDER



Calved
2-20-13

3846

17585764

[AMF, CAF, DDF, NHF]



Hoover Commander P32

Commander Son

Sells February 2, 2016



Hoover Commander P40

Commander Son

Sells February 2, 2016

CED	BW	WW	YW	RADG	SC	DOC	CEM	MILK	MB	RE	FAT
-2	+3.4	+79	+128	+32	+06	+30	+4	+26	+37	+78	+011
		1%	1%	2%		2%				10%	

\$W
+85.31 1%
\$F
+110.97 1%
\$G
+29.50
\$B
+150.13 5%

KMK Alliance 6595 187 #
CONNEALY CONSENSUS
Blinda of Conanga 004

Rito 6EMA of 4L3 Emblazon #
GESPA OF CONANGA 9380
Gossipa of Conanga 787

Sitz Alliance 6595 #
G A R Ext 916 #
Rito 616 of 4B20 6807 #
Blenda of Conanga 129
O C C Emblazon 854E #
Rita 4L3 of 2536 208
Millers Bullseye J373 #
Cossipana of Conanga 788

SEMEN \$25 CERTIFICATES \$25

- ★ Commander did just what his name says – he took command of the 2015 Hoover crop! Commander sired the top ratioing sire group in both the bull and heifer calves! In the non-ET bull division, three out of the top five weaning weight bull calves were sired by Commander and two of the top five weaning weight heifers were sired by Commander. Commander also sired the #1 adjusted weaning weight ET bull calf of the crop which also beat out all non-ET bulls to earn the coveted title of #1 adjusted weaning weight bull of the entire crop!
- ★ The first Commander calves are super stout and powerful, and we have the same report from two other herds that had Commander

calves born in 2015. Commander progeny are loaded with muscle and hind quarter. We will showcase Commander's first sons in our February 2, 2016 production sale.

- ★ Commander was the \$100,000 selection of Hoover Angus, KDS Angus, and Alta Genetics in the 2014 Connealy Angus Sale. This powerhouse bull was the top selling bull in Connealy's record event. Commander boasts a WW EPD above the top 1% of the Angus breed with his first progeny now through AHIR. When searching the AAA database, no other Connealy Consensus son can meet or exceed Commander's WW, YW, and Docility EPD combination!
- ★ Commander was the top pick among 500+ bulls in Whitman, Nebraska for the Hoover family, after seeing the mothers of their top 5 bull picks in the Connealy offering. Landi notes, "Commander offers an excellent phenotype and thickness with a great set of feet and legs. After viewing his dam that records a superb 3-104 WR, he easily became the bull of choice. His dam is a very easy fleshing, excellent uddered, pretty fronted female."
- ★ Commander overpowered the other bulls in his pen, and posted an impressive 877 pound weaning weight, ratio 119, and a 1514 pound yearling weight, ratio 121. His yearling weight was nearly 100 pounds more than the next highest performing Consensus son! Commander was the 6th heaviest adjusted weaning weight bull among nearly 500 bulls in his calf crop, and had the 2nd highest yearling weight among 368 bulls!
- ★ Although we have successfully calved heifers to Commander, in most herds we will recommend him and his sons for use on cows.
- ★ Owned with KDS Angus, Lenox, IA and Alta Genetics, Rocky View County, Alberta, Canada.

CONNEALY IMPACT



Calved
1-29-13

3274

17585606

[DDF]



Hoover Impact P26

Impact Son

Sells February 2, 2016



Erica of Ellston P77

Impact Daughter

CED	BW	WW	YW	RADG	SC	DOC	CEM	MILK	MB	RE	FAT
+13	+7	+65	+113	+21	+1.21	+12	+14	+27	+71	+73	-006
5%		10%	10%		20%		3%	30%	20%	15%	30%

\$W
+75.08 4%
\$F
+70.75 10%
\$G
+44.20 10%
\$B
+113.30

Connealy Reflection #
CONNEALY IMPRESSION #
Pearl Pammy of Conanga 194

Connealy Onward #
ELZA OF CONANGA 8265
Ella of Conanga 5605

Bon View New Design 878 #
Happy Grill of Conanga 6260
Vermilion Dateline 7078 #
Pearl Jam of Conanga 6114
Connealy Lead On #
Altune of Conanga 6104
G A R Grid Maker #
Eilaleaf of Conanga #

SEMEN \$25 CERTIFICATES \$40

- ★ Connealy Impact was our \$15,000 selection from the 2014 Connealy Angus sale. He definitely has an attractive look for a

calving ease bull. He exhibits muscle in his top, thickness through his rear and has a nice long stride. Both he and his dam are good footed. "Without a doubt, the best bargain in the 2014 Connealy Sale. We bred many cows and heifers to Impact his first year, because we believe he is a bull that can add value to our herd and our customers' herds," says Landi.

- ★ Viewing Impact's dam prior to the sale, we found her to be a very square made, deep bodied, nice uddered female, and one of the biggest, stoutest cows in the Connealy herd. She has a tremendous progeny record with 6-110 WR, and 4-109 YR. She is a paternal sister to Direct Deposit's dam - another Onward daughter that has a whopping 8-114 WR!
- ★ Impact's first calves came light and unassisted, many were out of heifers. With his first calf crop's birth and weaning records through AHIR, Impact went down slightly on BW EPD and came up slightly on WW EPD! His calves definitely have more frame than average. Look for his sons to headline the calving ease bulls in our February 2, 2016 auction. Impact was one of our most heavily used sires during the 2015 breeding season.

BASIN EXCITEMENT



Calved 2-03-08 U678 16047404 [AMF, CAF, DDF, M1F, NHF, OHF]

CED	BW	WW	YW	RADG	SC	DOC	CEM	MILK	MB	RE	FAT
+11	-.1	+73	+130	+.25	+.73	+28	+14	+20	+.35	+.58	+.047
15%	20%	2%	1%	15%		4%	3%			30%	

\$W
+72.47 5%
\$F
+100.06 1%
\$G
+21.41
\$B
+132.23 20%

Gardens Expedition #
BASIN EXPEDITION R156
Basin Primrose Lady 5287

Vermilion Payweight J847 #
BASIN LADY S532 AK
Basin Lady 306E

N Bar Emulation EXT #
Green Garden Gina 2268 S2
Basin Ambush 3905 #
Basin Primrose Lady 296E
Vermilion Dateline 7078 #
Vermilion Lass 7969
Basin Max 806C
Basin Lady 183C

SEMEN \$25 CERTIFICATES \$35

- ★ The biggest spread bull in the Hoover herd bull line-up, and the only sire above .90 Accuracy in the breed that can go from a negative BW EPD or less to a +73 WW EPD or higher! He is truly the epitome of curve-bending genetics! Excitement is a true calving ease bull without sacrificing the traits often lost in typical calving ease cattle.
- ★ Excitement produced the 2nd top selling bull in our 2014 auction at \$25,000 selling to Select Sires, Hoover Elation M123. Two high selling Excitement sons were selected by Alta Genetics in



Hoover Excitement N427
Excitement Son
Sells February 2, 2016



Hoover Excitement P17
Excitement Son
Sells February 2, 2016

our 2015 auction: Hoover Hercules and Hoover Explorer. A fourth Excitement son, Hoover Homestead, has semen available through ORigen. Excitement died at stud in 2015, and semen is limited in supply. Look for his sons to carry on his excellence!

- ★ In the fall 2013 Hoover calf crop, the top weaning weight bull was sired by Excitement at 870 pounds. The #1 weaning weight heifer was also sired by Excitement, at 804 pounds. Three of the top five weaning weight heifers of this crop were sired by Excitement. Each successive calf crop has shown equally impressive weaning results. Our oldest Excitement daughters are now five years old, and these daughters' calves have excellent growth. Excitement daughters have very uniform, nice udders with small teat size and good udder attachment. They are moderate sized, efficient females that will be easy fleshing cattle that can stand tougher environments. Their mothering skills are good also.
- ★ Excitement is sound made, clean-fronted, and offers an outcross pedigree to the Hoover program. Progeny have excellent muscle, rib, and thickness. Excitement daughters raised the 7th and 10th top adjusted weaning weight bull calves of the spring 2015 Hoover crop as well as the 13th top weaning weight heifer.
- ★ Excitement is our most trusted sure-fire calving ease sire. Excitement calves out of heifers can come 10-12 days early, with consistently low birth weights. Many progeny will be showcased in our February 2016 production sale, as well as many females carrying his service. Excitement cattle are easy to market with their "big spread" EPD traits and sound structure.
- ★ An Excitement son, Hoover Electrify, produced the 2nd top weaning weight bull of our spring 2013 crop. This bull was the 3rd top selling bull of our 2014 sale at \$24,000.
- ★ Owned with Basin Angus Ranch, Joliet, MT; Kuck Ranch, Bertrand, NE; and Ray-Mar Ranches, Oakdale, CA.

HOOVER HERCULES



Calved
3-4-14

N268

17879313

[AMF, CAF, DDF, NHF]

\$W
+82.89 1%
\$F
+89.21 1%
\$G
+20.83
\$B
+131.45 15%

Basin Expedition R156
BASIN EXCITEMENT
Basin Lady S532 AK

Hoover Carbon Copy
BLKCP EMPRESS ELLSTON L299
Blkcp Empress Ellston F186

Gardens Expedition #
Basin Primrose Lady 5287
Vermilion Payweight J847 #
Basin Lady 306E
SydGen C C & 7 #
Keymura Katy Z99 #
S A V New Design 3105
Blkcp Empress Ellston C109 #

SEMEN \$18 CERTIFICATES \$25

and grandam each earned Pathfinder honors, and his grandam still works in the Hoover herd at 16 years of age!

- ★ Carbon Copy daughters have become excellent young cows and have beautiful udders. Daughters in production average a 105 WR on their progeny! A Carbon Copy daughter raised the #1 adjusted weaning weight heifer calf (non-ET) of the spring 2015 Hoover calf crop.
- ★ Great grandam C109, a Pathfinder and Hoover Angus donor, has been one of the greatest cows in our history. She is the dam of Hoover Headliner and Hoover G Force, and has brought 8 progeny to auction averaging over \$10,500! C109 now records 9-108 WR that excludes a set of high ratioing twins. At 11 years of age, she is still going strong. C109 serves as the herd's 8th top ribeye ratio cow, and 8 sons have averaged a 15.3" ribeye.
- ★ Hercules froze semen shortly after his arrival at Alta this past spring, and semen is available through Alta. Hercules came home to the Hoover breeding pasture this past summer to service heifers.
- ★ Owned with Alta Genetics, Rocky View County, Alberta, Canada.

CED	BW	WW	YW	RADG	SC	DOC	CEM	MILK	MB	RE	FAT
+8	+.3	+72	+123	+.21	+.58	+24	+10	+25	+.29	+.69	+.043
30%	20%	1%	1%			10%	30%			20%	

★ Hercules was the \$13,000 selection of Alta Genetics in our 2015 sale. Hercules was the 2nd top adjusted weaning weight bull of the Hoover crop at 872 pounds from a first calf heifer. He then continued strong with the #1 top adjusted yearling weight in our 2015 sale yearling bulls (non-ET) at 1496 pounds!

★ Dam L299 records 2-106 WR.

★ Maternal grandsire Carbon Copy is a standout CC&7 son noted for his exceptional length of body and growth. Carbon Copy's dam

HOOVER ELATION M123



Calved
2-13-13

M123

17603620

CED	BW	WW	YW	RADG	SC	DOC	CEM	MILK	MB	RE	FAT
+16	-2.6	+62	+121	+23	+1.39	+30	+16	+23	+58	+.70	+.043
1%	2%	15%	3%	25%	15%	2%	1%		30%	15%	

- ★ Elation was the \$25,000 second top-selling bull in our 2014 auction. He is a calving ease deluxe package with a standout phenotype and outcross pedigree for much of the breed. Elation's first calves

\$W	\$F	\$G	\$B
+65.19 15%			
	+90.20 3%		
		+30.63	
			+152.67 5%

Basin Expedition R156
BASIN EXCITEMENT
Basin Lady S532 AK

SydGen C C & 7 #
PRIDE OF ELLSTON K68
Pride of Ellston D58 #

Gardens Expedition #
Basin Primrose Lady 5287
Vermilion Payweight J847 #
Basin Lady 306E
S A F Connection #
SydGen Forever Lady 4087
TC Gridiron 258 #
G G Pride 9232 #

SEMEN \$20 CERTIFICATES \$35

were true low birth weight, calving ease calves.

- ★ Elation is deep bodied with good capacity and has a lot of muscle in his rear. He is correct made and moves easy. He's thick, smooth, and attractive with an excellent disposition.
- ★ Dam K68 was a first calf heifer with Elation, and she now records 3-101 WR and 2-104 YR with a 353 day calving interval. Three full sisters to K68 work in the herd, one has earned Pathfinder honors.
- ★ Pathfinder grandam D58 has served as a donor for us.
- ★ Great grandam also earned Pathfinder honors.
- ★ Owned with Select Sires, Plain City, OH.

HOOVER EXPLORER



Calved
1-3-14

N7

17879231

[AMF, CAF, DDF, NHF]

CED	BW	WW	YW	RADG	SC	DOC	CEM	MILK	MB	RE	FAT
+11	-.3	+74	+121	+.20	+1.28	+30	+13	+27	+.32	+.51	+.007
10%	15%	1%	1%		20%	2%	5%	25%			

- ★ Explorer boasts a WW EPD 4 pounds above the top 1% of the breed, and a \$W Value nearly \$4 above the top 1% of the breed!
- ★ Hoover Explorer was the 4th top-selling bull at \$19,500 in our 2015 auction. Explorer was the 5th top WW bull of his crop at 860 pounds! Explorer offers a unique pedigree for much of the breed.

\$W	\$F	\$G	\$B
+82.48 1%			
	+80.16 3%		
		+24.07	
			+128.10 20%

Basin Expedition R156
BASIN EXCITEMENT
Basin Lady S532 AK

TC Friction 5130 #
QUEEN OF ELLSTON H115 #
Queen of Ellston C50 #

Gardens Expedition #
Basin Primrose Lady 5287
Vermilion Payweight J847 #
Basin Lady 306E
TC Friction 3275
TC Barbara 3022
Roth Famous 1006 #
Hawley West Girl 227

SEMEN \$20 CERTIFICATES \$25

- ★ Explorer is a big scrotaled, deep bodied bull with lots of pounds. He will sire high performing cattle that have good dispositions.
- ★ Pathfinder dam H115 is an amazing, beautiful cow. She ties as the #2 indexing cow of the entire Hoover herd with 5-113 WR!
- ★ H115 has an excellent udder, is super deep sided, and has style and eye appeal. H115 is truly a powerful performance cow, and one of my very favorites along with her mother.
- ★ Pathfinder grandam C50 is a working donor that maintains a 363 day calving interval and records 10-107 WR. She is a big, stout girl, but very correct in her structure and has a great udder.
- ★ Great grandam 227 recorded a whopping 13-113 WR.
- ★ Owned with Alta Genetics, Rocky View County, Alberta, Canada and Diamond J Angus, Mandan, ND.

HOOVER HOMESTEAD



Calved
8-07-12

L407

17529337

CED	BW	WW	YW	RADG	SC	DOC	CEM	MILK	MB	RE	FAT
+8	+.5	+63	+116	+.22	+.81	+28	+11	+23	+.29	+.79	+.055
30%	30%	10%	5%	30%		4%	20%			10%	

- ★ "He is creating lots of interest from the visitors at ORIGen. I believe he is the best bull Hoovers have raised! He offers great thickness, correctness, and phenotype with really good numbers," says owner

\$W	\$F	\$G	\$B
+68.01 10%			
	+84.33 4%		
		+21.07	
			+128.52 20%

Basin Expedition R156
BASIN EXCITEMENT
Basin Lady S532 AK

Hoover G Force
MISS BLACKBIRD ELLSTON J407
Miss Blackbird Ellston D471 #

Gardens Expedition #
Basin Primrose Lady 5287
Vermilion Payweight J847 #
Basin Lady 306E
SydGen C C & 7 #
Blkcp Empress Ellston C109 #
LaGrand 338 Right Time 3404 #
Miss Blackbird Ellston A528

SEMEN \$25 CERTIFICATES \$35

Brice Conover. Homestead scanned the biggest ribeye of his crop at 15.5". He should make nice uddered, easy fleshing females.

- ★ Dam J407 is a moderate sized, super deep ribbed cow that had the broody look of a cow at just a year of age. J407 was the 4th top weaning weight heifer of her crop at 731 pounds.
- ★ Maternal grandsire G Force is a full brother to Hoover Headliner J32. G Force was the 5th top weaning weight bull calf of his crop at 810 pounds. His dam, C109, has been one of the top cows ever raised at Hoover Angus. She has brought 7 sons to auction averaging \$10,800.
- ★ Pathfinder grandam D471 records 8-107 WR.
- ★ Owned with Brice Conover, Baxter, IA.

CONNEALY COUNSELOR



CALVED
2-13-10

060L

16761497

[AMF, CAF, D2F,
DDF, M1F, NHF]

CED	BW	WW	YW	RADG	SC	DOC	CEM	MILK	MB	RE	FAT
+13	+1	+61	+110	+22	+1.83	+10	+8	+30	+58	+1.29	-.021
5%	20%	15%	10%	30%	4%			10%	30%	1%	15%

\$W	
+63.64	15%
\$F	
+63.12	20%
\$G	
+45.50	5%
\$B	
+127.39	20%

G A R Retail Product #
CONNEALY MENTOR 7374 #
Executa of Conanga 939 #

Connealy Lead On #
JAZE OF CONANGA 234
Jaycee of Conanga 233

G A R Precision 1680 #
G A R Ext 4927
Jauer 353 Traveler 589 27 #
Exec of Conanga 6940 #
Connealy Leadtime #
Eligence Plus of Conanga
Rockn D Ambush 1531 #
Joy of Conanga 6230 #

SEMEN \$24 CERTIFICATES \$40

- ★ The Ribeye king! A significant amount of both ultrasound and carcass progeny has propelled Counselor's Ribeye EPD to the top of the breed, where it dwarfs breed average for sires at +.41! Counselor offers a very well-balanced set of EPDs, correct structure, and fresh pedigree for many of today's Angus cattle.
- ★ Further bolstering his popularity is his exceptionally strong showing in the ABS Sire Alliance. In the spring 2015 Sire Alliance data, Counselor ranks in the top 1% for Total Profit!



Blackcap Empress
Ellston N24

Counselor Daughter



Miss Blackcap Ellston L23

Counselor Daughter



Erica of Ellston L16

Three year-old Counselor Daughter

- ★ Counselor was the \$53,000 third top-selling bull in the 2011 Connealy Angus sale to ABS and Hoover Angus. He had excellent performance data, with an 882 pound weaning weight, ratio 113, 1387 pound yearling weight, ratio 111, 4.00 IMF, ratio 103, and a 16.0" ribeye, ratio 113.
- ★ Counselor is elite calving ease, high growth, and exceptional carcass quality. He is extra long, has a big scrotal, clean sheath, and pounds to push the scales down. His sons are notably big scrotal bulls with tight sheaths. Counselor's donor dam records 3-116 WR and 3-114 YR on her natural calves.
- ★ We calved out the first Counselor daughters in the spring of 2014, and we appreciate them for their nice tight udders, fleshing ability, and uniformity. Now with three year-old daughters in production, we can definitely tell he stamps his daughters with superior udders! A Counselor daughter raised the 7th top adjusted weaning weight heifer calf of the spring 2015 Hoover Angus crop at 743 pounds.
- ★ Owned with ABS, DeForest, WI.

CONNEALY DIRECT DEPOSIT



Calved
7-31-10

029E

16897926

[DDF]

CED	BW	WW	YW	RADG	SC	DOC	CEM	MILK	MB	RE	FAT
+2	+2.8	+75	+135	+25	+1.59	+11	+1	+28	+57	+66	-.011
		1%	1%	15%	10%			20%	30%	20%	25%

\$W	
+73.83	5%
\$F	
+101.72	1%
\$G	
+34.58	30%
\$B	
+165.91	2%

Connealy Danny Boy #
CONNEALY DANNY 5398
Endova of Conanga 858

Connealy Onward #
BOKA RAE OF CONANGA 168
Boka Rexa of Conanga 163 #

Connealy Timeline #
Energy of Conanga 4851
EGL Target 1148
Endive of Conanga 6860 #
Connealy Lead On #
Altune of Conanga 6104
Hunts Calculator 2720 #
Boka Ree of Conanga 155 #

SEMEN \$20 CERTIFICATES \$35



Blackbird of Ellston N40

Direct Deposit Daughter



Blkcp Empress Ellston N447

Direct Deposit Daughter
Sells February 2, 2016

- ★ Direct Deposit was our \$37,500 selection in the 2012 Connealy Angus Sale. He was definitely a cattlemen's favorite sale day. His dam is a top producing, bigger framed Onward daughter

- that records 8-115 WR and 7-114 YR. His grandam has earned Pathfinder honors.
- ★ Now with several crops of Direct Deposit progeny weaned, we continue to be very pleased with his progeny. They are very stout, correct, and easy fleshing, much like the bull himself. There are many Direct Deposit standouts in both the bull and heifer pens in each calf crop. 200 weaned progeny through AHIR average a 102 wean ratio, 103 yearling ratio, 101 scrotal ratio and 104 IMF ratio! His first daughters in production have very nice udders and average a 101 wean ratio on their progeny. We have used Direct Deposit on many CC&7 daughters, and this appears to be an excellent combination.
 - ★ In our fall 2014 calf crop, Direct Deposit sired the #1 adjusted weaning weight heifer calf of the crop as well as the #2 adjusted weaning weight bull! In the ET divisions that same year, both the top WW ET bull and heifer were sired by Direct Deposit.
 - ★ Several visitors to the farm have picked Direct Deposit as one of their favorite sires at Hoover Angus. He is a correct made bull that offers more frame than found in most of the Danny lines. He is an exciting outcross pedigree for much of the breed.

JAR TOTAL PACKAGE 903



Calved
1-21-09

903

16456514

[AMF, CAF, DDF, NHF]

CED	BW	WW	YW	RADG	SC	DOC	CEM	MILK	MB	RE	FAT
+4	+2.2	+67	+116	+34	+1.36	+24	+7	+31	+90	+82	-.047
		5%	5%	1%	15%	10%		10%	5%	10%	3%

★ Total Package was the #1 weaning weight bull of the 2009 Jallo Angus crop at 976 lbs., WR 126! He posted a 1520 lb. yearling weight, YR 113, IMF 5.18, ratio 150, along with a 17.9" ribeye, ratio 119. He was the #1 scanning IMF bull in the Jallo sale.

\$W
+76.21 4%
\$F
+82.07 5%
\$G
+49.60 3%
\$B
+178.44 1%

Hyline Right Time 338 #
ALC PACKAGE H74P
ALC O Zara Z13L

TC Total 410 #
JAR ZARA 202 7181
J A R Zara of RDH 202

Leachman Right Time #
Hyline Pride 265
SVF Gdar 216 LTD #
Alc Dateline Lady 109E
Bon View New Design 208 #
TC Erica Eileen 2047
Jar Battle Force 916
H C Zara 802 #

SEMEN \$20 CERTIFICATES \$30

- ★ Total Package's excellent carcass and growth traits have earned him a very high \$Beef value! He will put growth, lean muscle along with IMF in his progeny. Total Package sons are an excellent choice if you feed out your calves and sell on a grid. Total Package sons are big scrotal bulls, which aids in daughter fertility and is favorable in bulls.
- ★ Another successful crop of Total Package calves will come to auction in February 2016 at our annual production sale. One son was the 4th top weaning weight bull calf of our spring 2014 crop at 861 pounds! Total Package's daughters in production are gentle cows to work with at calving time.
- ★ Owned with Jallo Angus Ranch, Fordville, ND.

BRUNS LINEBACKER 432



Calved
1-28-12

432

17366655

[AMF, CAF, DDF, NHF]

CED	BW	WW	YW	RADG	SC	DOC	CEM	MILK	MB	RE	FAT
+11	+1	+59	+107	+25	+1.19	+21	+10	+31	+39	+22	-.034
15%	20%	20%	15%	15%	25%	15%	30%	10%			5%

★ Linebacker was purchased in the spring of 2013 as a calving ease, correct-made, good-footed sire with an outcross pedigree not

\$W
+72.54 5%
\$F
+63.77 20%
\$G
+27.20
\$B
+131.97 20%

Cherry Crk Lineup 8124
STYLES CC LINEUP L3
Styles Elba J1

LaGrand Revenue 8400
WINDAC CHANCE 1420 BAF #
Windac Chance 997 Baf #

Cherry Crk Online G15
Ms CC Emma 228 5112S #
H S A F Bando 1961 #
Plainview Elba D88
Rito Revenue 5M2 of 2536 Pre
Roth Lady Bell 2137
Mohnen Mullen 154
Windac Chance R019

only for Hoover Angus, but a majority of the Angus breed. He is super long sided and deep ribbed. He has lots of mating potential. Prior to when Linebacker was selected, we noted his very calm disposition. He continues to stay very gentle, and is growing into the mature herd bull look.

- ★ Linebacker was born at 75 pounds, weaned at 856 pounds, WR 114, and turned in a 1506 pound yearling weight, ratio 113. He aces his ultrasound scan with a 5.65 IMF, ratio 130, 13.8" ribeye, ratio 105, and rib and rump fat ratios of 77 and 75, respectively.
- ★ Females will carry Linebacker's service in our 2016 sale.
- ★ Owned with Bruns Angus, Madison, SD.

SYDGEN JOURNEY 8200



Calved
1-30-08

8200

16029532

[AMF, NHF]

CED	BW	WW	YW	RADG	SC	DOC	CEM	MILK	MB	RE	FAT
-2	+3.0	+81	+138	+40	+2.40	+21	+5	+24	+59	+75	-.064
		1%	1%	1%	1%	15%			30%	15%	1%

★ Journey has some of the highest growth EPDs of any Angus bull in America due to his high growth progeny! His sons are the biggest scrotal bulls we offer.

\$W
+80.49 2%
\$F
+127.18 1%
\$G
+40.13 15%
\$B
+203.84 1%

SydGen Rocky Road 2060
SYDGEN JOURNEY 4355
SydGen Blackbird Lady 1059

Vermilion Payweight J847 #
BASIN LUCY 1736
Basin Lucy 3829

Rockn D Ambush 1531 #
S A F Blackbird 6028
S A F Focus of E R #
S A F Blackbird Lady 9115
Vermilion Dateline 7078 #
Vermilion Lass 7969
C A Future Direction 5321 #
Basin Lucy 178E

SEMEN \$20 CERTIFICATES \$40

- ★ Journey was selected to add frame size and growth, and his calves certainly do that! In the fall 2012 Hoover Angus calf crop, Journey sired the #1 adjusted weaning weight bull as well as 4 of the top 10 adjusted weaning weight heifer calves! Journey's progeny average a 106 IMF ratio and 100 ribeye ratio.
- ★ Weaning at 857 pounds to be the top indexing calf of his crop at SydGen, Journey went on to post a 1393 lb. yearling weight and scanned a 16.8" ribeye.
- ★ Journey's dam traces back to the famous Basin Lucy 178E cow who has given rise to one of the most powerful and popular cow families in the breed today.
- ★ Owned with Sydenstricker Genetics, Mexico, MO.

HOOVER NO DOUBT



Calved
1-29-14

N68

17882682

[AMF, CAF, DDF, NHF]



Miss Blackcap Ellston J2
Dam of Hoover No Doubt

CED	BW	WW	YW	RADG	SC	DOC	GEM	MILK	MB	RE	FAT
+4	+2.2	+78	+139	+29	+1.72	+34	+7	+28	+71	+1.27	+0.20
		1%	1%	2%	5%	1%		20%	20%	1%	

\$W
+85.95 1%
\$F
+119.15 1%
\$G
+43.24 15%
\$B
+183.64 1%

MOGCK Sure Shot

MOGCK BULLSEYE

Mogck Mary 1255

SydGen C C & 7 #

MISS BLACKCAP ELLSTON J2

Miss Blackcap Ellston D154 #

Mytty In Focus #

Mogck Black Lass 2065

K C F Bennett Coalition SCC #

Mogck Mary C 1757

S A F Connection #

SydGen Forever Lady 4087

TC Gridiron 258 #

Miss Blackcap Ellston A269

SEMEN \$30 CERTIFICATES \$25

- ★ Hoover No Doubt is the \$67,500 top-selling bull in our 87 year history at Hoover Angus!
- ★ No Doubt was a hunk that turned in an adjusted 1540 pound yearling weight, ratio 113 to be the #1 adjusted yearling weight bull in our sale! He also scanned a 3.91 IMF, ratio 108, and tied as the top scanning ribeye bull (among 81 yearlings) with a 17.3" ribeye, ratio 114! No Doubt is a superb disposition bull that has the style and eye appeal everyone likes. He is exceptionally stout, and will definitely put meat and muscle in his calves. Many cattlemen believe No Doubt is thicker than Hoover Dam when he sold!
- ★ **No Doubt is the top non-parent bull of the breed when combining his growth, Docility, \$F and \$B EPDs! Backed by 50K, No Doubt boasts 7 EPDs and indexes ABOVE the top 1% of the breed: WW, YW, Doc, RE, \$W, \$F, and \$B!**

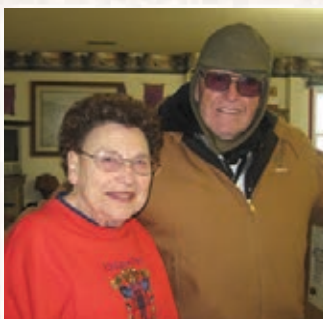
- ★ Donor dam J2 was the lead-off, \$20,000 top-selling open heifer from our 2011 auction selling to KDS Angus. She was one of the most beautiful females we have ever produced. Kevin Sweeney of KDS Angus reports that J2 is an extremely docile female that will meet you at the gate and is a leader when he moves cattle.

- ★ J2 was the 4th top weaning weight heifer calf of her crop at 755 pounds, WR 123. She went on to post an 1104 pound yearling weight, YR 116. She scanned a 5.46 IMF, ratio 107 and a 15.4" ribeye (5.7" above breed average), ratio 126.
- ★ When we sold J2, we retained one flush from this female, and had five live calves born in 2014. Only one was a bull, No Doubt. He and his four flush sisters averaged a 108 WR in proper contemporary groups, all with registered recipients. The 4 sisters had an average 774 pound weaning weight. The top one at 850 pounds was the #1 weaning weight female of the entire heifer crop (ET and non-ET) and we believe to be the top adjusted weaning weight ever recorded on a heifer at Hoover Angus! Even more amazing is that she was raised by a 12 year-old recip! Other flush sisters were the 3rd and 5th top adjusted weaning weight ET heifers.
- ★ J2 is a 10th generation Hoover Angus bred, born, and raised Blackcap Ellston female.
- ★ Pathfinder grandam D154 records 6-110 wean ratio. One daughter, G278, was the 3rd top weaning weight heifer of her crop at 748 pounds, WR 127. G278 now records 3-104 WR, but this excludes her twin heifers that ratioed 119 and 116 to be the #2 and #7 top weaning weight heifers of their crop, respectively. One of these was the \$30,000 top-selling female in our 2013 auction, the other works in our herd and is the dam of the \$43,000 Hoover Hawkeye. G278's only son was the 2nd top-selling bull in our 2011 auction at \$17,000 selling to Mike Paul in Washington state.
- ★ No Doubt was a significant part of the 2015 breeding program at Hoover Angus, as well as at Peak Dot Ranch and Diamond J Angus. His first calves will arrive in January of 2016.
- ★ Owned with Alta Genetics, Rocky View County, Alberta; Diamond J Angus, Mandan, ND; and Peak Dot Ranch, Wood Mountain, Saskatchewan.

88 Years of Quality Angus Cattle



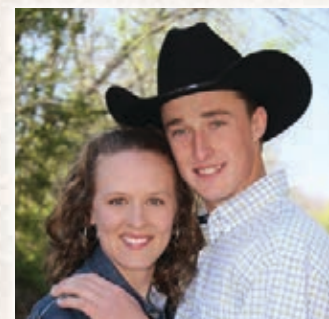
Herd Founders
Walt & Sadye Hoover



Second Generation
John & Barb Kiburz



Third Generation
David & Joy McFarland



Fourth Generation
Andrew & Landi
McFarland-Livingston

Same Family...

Same Farm...

Same Mission...

Superior Quality

We are proud of our history, treasure the present, and set our sights on the future!