



Semen & Herd Sire

*Elite genetics accessible and
affordable to everyone!*

Directory
2024



Hoover Dam



Hoover About It



Hoover No Doubt

Countdown To 100...96 Years of Angus Genetics
by the Hoover Family



Deep Creek Legitimate 203



Mohnen General Lee



E L K Trophyclass



Front row:

Landi, Gwen, John, Joy and Ty

Back row: **Andrew and David**



Mogck Entice

//
The Hoover Family homesteaded in Southern Iowa in 1856; the purebred Angus herd was founded in 1928 by Walt Hoover. Hoover Angus has passed through the female side of the Hoover family since that time, with second generation John & Barb (Hoover) Kiburz, third generation David & Joy (Kiburz) McFarland, and fourth generation Andrew & Landi (McFarland) Livingston. Now in our 168th year of family farming and 96th consecutive year of Angus cattle, we strive to create genetics with an optimum balance of phenotype, maternal, performance, and EPD strength through the art and science of a disciplined breeding program.
//

Andrew & Landi Livingston
Ellston, IA • landi@hooverangus.com
Landi's cell 641-344-7684

David & Joy McFarland
Tingley, IA
Joy's cell 641-344-3234

John Kiburz
Tingley, IA

www.hooverangus.com
www.facebook.com/HooverAngusFarm

A supplement to the February 6, 2024 Hoover Angus sale book and the January 2024 Angus Journal. EPDs current as of 12-1-23.

MOHNEN GENERAL LEE



Calved 12-30-20 1301 20021321 [AMF, CAF, D2F, DDF, M1F, NHF, OHF, OSF, RDF]

CED	BW	WW	YW	SC	DOC	HP	CEM	MILK	MB	RE	CLAW	ANGLE
+7	+8	+79	+133	+1.69	+31	+8.4	+5	+31	+39	+43	+50	+40
		15%	20%	10%	4%			20%				15%

\$M
+69 30%
\$F
+95
\$B
+131
\$C
+239

Baldrige Colonel C251 #
MOHNEN GENERAL 548
 S AV Madame Pride 5290

 S AV Sensation 5615 #
MOHNEN JILT 1848
 Mohnen Jilt 2504 #

baldrige Xpand x743
 Baldrige Isabel Y69
 S AV 8180 Traveler 004 #
 S AV Madame Pride 0075
 S AV Registry 2831 #
 S AV Blackcap May 4136
 Mohnen Long Haul 502 #
 Mohnen Jilt 382

SEMEN \$25 CERTIFICATES \$40

- ★ Landi's favorite sire group of the spring 2023 crop! This was our first crop of calves, and we could see early in their life we would like this sire group, so we used General Lee heavily for our spring 2024 crop. The #1 adjusted weaning weight bull calf of our crop was by General Lee! The General Lee sire group represents what is often lost as our breed chases extreme EPDs – problem-free cattle that are easy to look at, have good feet, good dispositions, and a breed character Angus head.
- ★ With below average birth weight ratios and above average weaning ratios, the General Lee calves stood up well in our performance herd. However, we think the best is yet to come. We purchased General Lee to improve dispositions, feet, and udders, and we believe those will be the biggest long-term benefits of this bull! General Lee's first progeny will sell in our February 6, 2024 sale as well as heifers bred to him.
- ★ This classy, super easy-going bull met with our approval after seeing him and his mother in person. His feet were some of the best we evaluated in the spring of 2022! He's long, thick and sound with the rib capacity to make beautiful, productive daughters.
- ★ General Lee is a big testicle bull that froze semen quickly at CGS as a yearling bull. He weaned at 801 pounds, WR 110, YW 1438 lbs., YR 106, and he scanned over 1.1" of ribeye per hundred pounds of body weight!
- ★ General Lee lives up to his Docility EPD in the best 4% of the breed, and we are excited to use him to continue the tradition of disposition excellence at Hoover Angus! Also important to Hoover Angus customers, he has a tight sheath and slick hair coat for working on tough fescue pastures.
- ★ General Lee's young dam, which comes from the most famous cow line in Mohnen history, has a very small teat size, tight udder attachment, and records 3-95 BWR, 3-100 WR, 2-105 YR, 2-109 IMF ratio and 2-107 ribeye ratio.
- ★ Semen is available on General Lee – semen that was used to produce a record flush for us! This flush dominated our ET calf crop, and sons from this flush will sell in our February 6th sale.
- ★ As always, Hoover Angus is proud to show you our cattle - stop by Hoover Angus to see General Lee and his progeny in person!
- ★ Owned with Mohnen Angus, White Lake, SD.

General Lee Progeny from his first calf crop



Blackcap Empress Ellston B1
 8 month-old General Lee
 Daughter



Blackcap Empress Ellston B56
 6 month-old General Lee
 Daughter



Blackcap Empress Ellston B9
 6 month-old General Lee
 Daughter



Blackcap Empress Ellston B15
 8 month-old General Lee
 Daughter



Hoover General Lee B12
 6 month-old General Lee Son
 Sells February 6, 2024



Blueblood Lady Ellston B54
 6 month-old General Lee
 Daughter



Hoover General Lee B5
 General Lee Son
 Sells February 6, 2024



Hoover General Lee B21
 General Lee Son
 Sells February 6, 2024



Miss Blackcap Ellston B64
 General Lee Daughter
 Sells February 6, 2024



Hoover General Lee B163
 General Lee Son
 Sells February 6, 2024

**For more photos and detailed information
 on Hoover herd sires, visit
www.hooverangus.com/herdsires.html**

E L K TROPHYCLASS



Calved 3-8-21 I46

20191986

[AMF, CAF, D2F, DDF, M1F, NHF, OHF, OSF, RDF]

CED	BW	WW	YW	SC	DOC	HP	CEM	MILK	MB	RE	CLAW	ANGLE
+8	+2.2	+81	+133	+1.62	+16	+6.1	+8	+32	+70	+89	+52	+58
		10%	20%	10%				20%		15%		

\$M
+57
\$F
+118 5%
\$B
+173 15%
\$C
+281 15%

LD Capitalist 316 #
MUSGRAVE 316 STUNNER
MCATL Blackbird 831-1378 #

Connealy Onward #
PINE COULEE BLACK ANNIE U7
War Hill Blackbone Annie

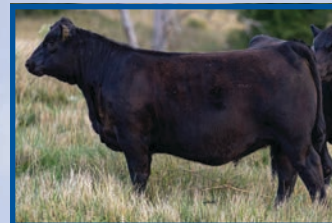
Connealy Capitalist 028 #
LD Dixie Erica 2053
MCATL Pure Product 903-55 #
MCATL Blackbird 1378-573
Connealy Lead On #
Altune of Conanga 6104
G A R Expectation 4915 #
V T 6807 Traveler S32

SEMEN \$25 CERTIFICATES \$40

- ★ Trophyclass was brought to Hoover Angus as the phenotypic standout of Tyler & Meg Scales' 2021 bull crop. His phenomenal producing dam is still going strong at 16 years of age. We expect Trophyclass daughters to leave a legacy for not only phenotype, but fertility, longevity, structure, foot quality and optimum growth and carcass qualities.
- ★ We weaned our first Trophyclass calves in August, 2023, and what standouts they are! Trophyclass stamps his calves with unprecedented rib shape – they will make awesome cows! We are excited to offer the first Trophyclass calves in our February 6, 2024 sale - they are the stoutest, most eye-catching sire group we have!
- ★ Trophyclass traces back to Walt Hoover's foundational herd sire, the 1936-born Revolutions Bell Boy.
- ★ Trophyclass' EPDs aren't earth shattering, but more important, they are **REALISTIC, BELIEVABLE, and ACHIEVABLE**. As our breed constantly chases wild EPDs and outlier marbling genetics, we wanted a bull that hits an "optimal" target for carcass genetics while prioritizing maternal strength, longevity, and superior feet. Trophyclass does that! Better yet, he set the weaning weight record at E L K Angus in a dry year! Trophyclass thrived on the tough sagebrush country at the base of the Bighorn mountains in Tyler & Meg's herd that is built around the commercial cattlemen's satisfaction.
- ★ The back story on Trophyclass... Sometimes when you least expect it, you'll find what you are looking for! We traveled thousands of miles last year, made countless phone calls, and poured over numerous sale ads and catalogs to find the next "great one". With foot structure and documented longevity at the top of my long list of criteria, it's a pretty short list of bulls that meet my specs.
- ★ We had just been to a big ranch looking at bulls, and on the way home, we made a quick visit to see bulls from a customer of ours. It was more of a courtesy visit than anything. I was deflated from looking through so many bulls this spring, and not finding "the one." But there I was, in the 30 mph wind, sand blowing in my eyes, trudging through yet another pen of bulls.
- ★ And then I saw him! I couldn't believe my eyes, but the stud of the pen was the bull I had come to look at! He knew he was good too; he walked with his head up, posed with a leg on all four corners to display his superior structure, wide stance and chest floor, bold muscle, big testicles, and superior foot shape. This proud bull had



Erica of Ellston B70
7 month-old Trophyclass
Daughter



Prim Lassie of Ellston B52
6 month-old Trophyclass
Daughter



Miss Blackcap Ellston B49
8 month-old Trophyclass
Daughter



Hoover Trophyclass B59
Trophyclass Son
Sells February 6, 2024



Pine Coulee Black Annie U7
Dam of Trophyclass
Pictured at 8 years of age



Erica of Ellston B127
Trophyclass Daughter
Sells February 6, 2024

a long, smooth stride, and his feet were one of the best two bulls I evaluated last spring.

- ★ As Vance Uden once said, "Don't buy a bull that you have to talk yourself into buying. Buy a bull that when you see him, you know he's the one." Those words hit me when I saw this bull, and I knew he was the bull to own. My decision was solidified when I discovered his dam was 14 years old and still going strong! Seven days after seeing the bull, E L K Trophyclass was at Hoover Angus, ready to breed cows.
- ★ Jim Stampfel of Pine Coulee Angus, breeder of Trophyclass' dam, has this to say about her, "The Black Annie U7 cow is definitely in the discussion as the best cow to be raised at Pine Coulee. She passes on a ton of muscle and style with very good feet, udder, and excellent fertility. She can travel, she can forage, and her production record is excellent. Lastly, her disposition can't be beat, calm and mature." U7's natural calves average a moderate 96 birth ratio, yet whopping 110 weaning ratio and 108 yearling ratio. She sold in the 2018 Ladies of the Beartooth Sale for \$31,000, and has produced over \$150,000 in progeny sales including the Lot 1 bull in the 2018 Pine Coulee Bull Sale.
- ★ Trophyclass froze semen on his second collection at just 13 months of age, and was flushed to one of the most high-profile cows in the Hoover herd. Then in the fall of 2022, after being away from cows or collections for 3 months, he froze just shy of 500 units in his first walk-in collection!
- ★ High quality semen is available through the owners and Sire Buyer. Elite genetics from Hoover Angus are accessible and affordable to everyone looking to improve their herd!
- ★ Owned E L K Angus, Buffalo, WY.



Hoover Trophyclass B98
Trophyclass Son
Sells February 6, 2024

RAML OPTICS 0710



Calved 12-19-19 0710 19832718 [AMF, CAF, D2F, DDF, M1F, NHF, OHF, OSF, RDF]

CED	BW	WW	YW	SC	DOC	HP	CEM	MILK	MB	RE	CLAW	ANGLE
+13	+2	+73	+135	+1.34	+17	+13.0	+15	+21	+4.5	+1.03	+5.4	+4.2
10%	30%	25%	15%	20%			3%			5%		20%

\$M
+34
\$F
+106 15%
\$B
+158 25%
\$C
+239

GDAR Leupold 298 #
RAML RANGEFINDER 7536
RAML Royce 536

Barstow Cash #
RAML RUBY 710
RAML Ruby 319 #

A A R Leupold 0578 #
GDAR Miss Blackcap 9232
TC Aberdeen 759 #
RAML Royce 335
Sitz Dash 10277 #
Barstow Queen W16
TC Aberdeen 759 #
RAML Ruby 103

SEMEN \$30 CERTIFICATES \$40

- ★ Optics was one of our largest sire groups in 2022 and 2023, and they have not disappointed yet! These calves were fun to wean, as they showed excellent growth and the added frame and length of body our customers like. They represent a completely new pedigree for our repeat customers. Our February 6, 2024 sale will once again offer a large sire group of Optics bulls and females. If the Angus breed has gotten too small for your liking, check out Optics progeny!
- ★ Optics has a good projection for longevity, with a +1.11 Functional Longevity EPD (FL).
- ★ Optics sired the #1 adjusted weaning weight bull calf of our 2022 crop at 915 pounds! The 4th top weaning weight bull was also by Optics. In the heifer division (non-ET calves), Optics sired the #2, #4, and #6 top weaning weight heifers! Once again in our 2023 crop, Optics calves performed well – they dominated the top end of our ET bull calf weaning weights, and 2nd top weaning weight heifer of the entire crop was by Optics.
- ★ In our quest to find the most “optimal” bull to be sold in the spring of 2021, Optics met the mark! His EPD package instantly drew our attention, his video further sparked our interest, and by the time we evaluated the bull in person as well as FOUR of the females in his pedigree, we knew this was the bull to own!
- ★ Before we purchased Optics, we saw his dam, grandam, and great grandam, and were impressed with each generation. His dam records 4-98 BWR, 4-107 WR, and 4-107 YR. His grandam has earned Pathfinder honors, and his 2nd, 3rd, and 4th generation dams have all served as donors for Raml Cattle. Optics’ great grandam was still going strong at 12 years of age, and she produced the \$28,000 Raml Rugby 7103 owned by ABS. She is a beautiful uddered, excellent footed, smooth walking female.
- ★ Hoover Angus purchased Optics for \$29,000, then partnered up with the runner-up bidders after the sale. Optics quickly froze over 500 units of semen as a yearling bull before turn-out.
- ★ Optics weaned at 812 pounds, WR 112, YW 1420 lbs., YR 113, and had a 41 cm scrotal. He is wide based, thick, smooth shouldered, and offers the frame and stretch that is hard to find in the breed today. His pedigree is a complete outcross to our program, and the



Hoover Optics B2
6 month-old Optics Son
Sells February 6, 2024



Hoover Optics B50
6 month-old Optics Son
Sells February 6, 2024



Blackcap Empress Ellston B32
6 month-old Optics Daughter



Erica of Ellston B17
8 month-old Optics Daughter



Hoover Optics B14
Optics Son
Sells February 6, 2024



Blackcap Empress Ellston B8
6 month-old Optics Daughter



Erica of Ellston B44
Optics Daughter
Sells February 6, 2024



Hoover Optics A52
\$8000 Optics Son



Hoover Optics B6
Optics Son
Sells February 6, 2024



Blackcap Empress Ellston A85
\$4500 Optics Daughter

vast majority of current Angus pedigrees.

- ★ Sire Rangefinder was the \$29,000 selection of ABS in the 2018 Raml sale. Three impressive Rangefinder sons in the 2021 Raml sale averaged \$15,500.
- ★ Owned with Cattle Visions, Clark, MO; Panther Creek Ranch, Bowen, IL; Raml Cattle, Goodwin, SD; and Unlimited Genetics, Bloomfield, IA.

MOGCK EMPIRE 110



Calved
12-20-19

110

19889822

[AMF, CAF, D2F,
DDF, M1F, NHF,
OHF, OSF, RDF]



Queen of Ellston A88

9 month-old Empire Daughter



Hoover Empire A177

\$7500 Empire Son

CED	BW	WW	YW	SC	DOC	HP	CEM	MILK	MB	RE	CLAW	ANGLE
+16	-3.1	+79	+134	+71	+24	+15.3	+14	+27	+98	+96	+50	+61
2%	1%	15%	20%		25%	15%	5%		15%	10%		

\$M
+81 10%
\$F
+102 20%
\$B
+177 10%
\$C
+311 5%

K C F Bennett Fortress #
MOGCK FORTRESS 517
Mogck Rosebud 1545

SydGen Enhance 18170041
MOGCK ERALINE 1748
Mogck Eraline 855 #18328325

Connealy Consensus #
Thomas Patricia 9705
Styles Cash R55
Mogck Rosebud 93
SydGen Exceed 3223 #
SydGen Rita 2618
MOGCK Density 1233
Mogck Eraline 2142

SEMEN \$25 CERTIFICATES \$40

- Empire is our "go to" heifer bull! He is an ultra calving ease bull that boasts CED and CEM EPDs in the top percentiles of the breed! Better yet, these cattle that have explosive weaning growth. One of the best things about Empire's progeny is their growth curve that gives our customers accelerated early growth with a respectable mature size, so Empire's daughters won't be too big and harsh on feed resources! An ideal scenario for commercial cattlemen selling their calves by the pound at weaning and retaining replacement daughters!
- For those interested in the new Functional Longevity EPD (FL),

- Empire is the highest Hoover-owned sire with a +1.19 FL EPD.
- Empire isn't your typical "calving ease" bull lacking muscle – he scanned a 15.1" ribeye to have 1.17" of ribeye per hundred pounds of body weight! His carcass EPDs are favorable for producers feeding out their calves and selling on a grade and yield grid.
- In our 2023 spring crop, Empire sired the #1 weaning weight heifer and the #2 weaning weight bull! Empire calves born to two year-olds at Hoover Angus averaged an ideal 72 pounds in his first crop; Empire calves out of mature cows (mainly larger BW cows) averaged 76 pounds. Over 100 progeny in 9 herds average a 102 weaning ratio! Mogck & Sons had a large sire group of Empire calves, and visitors called them their best sire group!
- After seeing the Empire and his Maternal Plus® enrolled dam, we were ready to use this bull on a significant number of heifers at Hoover Angus! Many heifers bred to Empire sell in our February 6, 2024 sale.
- Empire's dam is an 11th generation Eraline female to be bred, born and raised in the Mogck & Sons operation. Empire had a light birth weight of 62 pounds followed by an 816 pound weaning weight, WR 116, YW 1462 lbs., YR 110.
- We welcome visitors to see this bull, as we are proud of his structure, feet, substance, and disposition! Come see him on a pasture tour this summer! Hundreds of units of semen have been sold for heifer projects; commercial pricing is available.
- Owned with Mogck & Sons, Olivet, SD.

HOOVER ABOUT IT



Calved
1-12-22

A26

20427019

[AMF, CAF, D2F,
DDF, M1F, NHF,
OHF, OSF, RDF]

\$M
+86 5%
\$F
+93
\$B
+150
\$C
+281 20%

Mogck Bullseye #
HOOVER NO DOUBT
Miss Blackcap Ellston J2

Baldrige 38 Special #
ERICA OF ELLSTON T78
Erica of Ellston N54 #

MOGCK Sure Shot #
Mogck Mary 1255
SydGen C C & 7 #
Miss Blackcap Ellston D154 #
EF Commando 1366 #
Baldrige Isabel Y69
Basin Excitement #
Erica of Ellston G366 #

SEMEN \$25 CERTIFICATES \$40

CED	BW	WW	YW	SC	DOC	HP	CEM	MILK	MB	RE	CLAW	ANGLE
+10	-1.2	+64	+122	+1.15	+24	+15.0	+11	+37	+77	+69	+43	+35
20%	10%				25%	20%	25%	4%			25%	4%

- There is (No Doubt) About It this bull is truly unique! Finally, an ultra calving-ease Hoover No Doubt son from the best cow family at Hoover Angus! He is an easy choice to use on heifers and not sacrifice thickness and power at weaning time! Save every daughter he makes for your replacement herd! He offers superior foot quality.
- Hoover Angus is pleased to offer semen discounts to our customers in appreciation for being our customer – please contact Landi for details on pricing for this "heifer project" bull!
- Hoover About It is an attractive, smooth made bull that is really long, big hipped, thick, and has the muscle you would expect from No Doubt. He offers a super calm disposition and the genetic ability to produce a set of calm temperament calves.
- His dam is a beautiful uddered, young cow with a 349 day calving

- interval, indicative of the superior fertility in this cow family. His grandam and great grandam are both Pathfinder Hoover donors. Grandam N54 is a very low birth weight cow whose calves get right up and grow to surpass their heavier birth weight contemporaries at weaning time. N54 has a perfect 365 day calving interval, despite stealing flushes several years.
- Great grandam G366 is regarded as the best cow in our 96-year history, and her 23 descendants averaged \$10,076 in our 2023 sale! Four of her direct daughters have earned the elite Pathfinder designation, and at least 15 of her daughter descendants have served as donors. Although not talked about much in the EPD era we are in, this Erica cow family has exceptional mothering ability – imperative for commercial cattlemen making a living from cattle!
- Hoover About It has been leased to Jack Laurie of Breeder Genetics in Australia to be part of his strong line-up of sires. After viewing the bull in person, Jack stated, "About It stood out to us for his unique ability to be utilized on heifers, without a sacrifice on muscle shape, constitution and structure. A bull we believe offers pedigree diversity, maternal excellence, backed by a program with a strong commitment to phenotype recording to our clients in Australia and New Zealand."
- Owned with Larry & Bill Hohertz, Greenfield, IA.

MOGCK ENTICE



Calved
1-31-17

2577

18952921

[AMF, CAF, D2F,
DDF, M1F, NHF,
OHF, OSF, RDF]

CED	BW	WW	YW	SC	DOC	HP	CEM	MILK	MB	RE	CLAW	ANGLE
+2	+2.2	+77	+141	+2.21	+30	+11.5	-4	+31	+.80	+.74	+.34	+.47
		15%	10%	2%	5%			20%	25%	30%	4%	

\$M
+54
\$F
+112 10%
\$B
+176 15%
\$C
+282 15%

SydGen Exceed 3223 #
SYDGEN ENHANCE 18170041
SydGen Rita 2618

Mogck Sure Shot 253
MOGCK ERICA 2255 #
MOGCK Erica 2162

SydGen Googol
SydGen Forever Lady 1255
SydGen Liberty GA 8627 #
Fox Run Rita 9308 #
MOGCK Sure Shot #
Mogck Miss 61
Connealy 5050 611B
MOGCK Erica 08

SEMEN \$25 CERTIFICATES \$40

- Entice yearling bulls topped our 2022 sale, averaging \$9141 on 16 sons! It's easy to see why these cattle are in high demand – they are excellent disposition, high growth cattle with more frame and length of body than offered by most cattle in the Angus breed today. Progeny have excellent thickness, added length of body, style, and a commanding presence!
- The last few years when we have taken hip height and scrotal measurements on our bulls, we have noticed there are bulls that “filled the chute” width-wise. Almost every single time, these bulls are sired by Entice.
- We weaned over 70 Entice calves in his first calf crop, including the #1 adjusted weaning weight bull AND heifer. Each calf crop has been equally impressive and very well-received by our customers.
- Entice progeny scan well too, with over 1200 progeny at 103 IMF ratio and 100 ribeye ratio with below average fat ratios.
- Entice offers a correct skeleton and exceptional phenotypic



Erica of Ellston A32
Entice Daughter
Sells February 6, 2024



Erica of Ellston A96
Entice Daughter
Sells February 6, 2024



Erica of Ellston V88
\$32,000 Entice Daughter



Hoover Mahomes
\$15,500 Entice Son

presence in a mid-6 frame. He is wide based, super long, big ribbed, square hipped, tight sheathed, and has abundant thickness. Entice exhibits superior foot shape, and we see this in his progeny too – we see Entice as a breed improver for foot shape. You can improve testicle size in one generation using Entice too!

- Entice was the \$42,000 top-selling bull in the 2018 Mogck & Sons sale, where the sire group of Enhance sons led-off the sale catalog and produced the top two selling bulls. Entice's Pathfinder dam records 7-104 WR, 6-103 YR, 6-112 IMF ratio, 6-104 ribeye ratio, 6-85 rib fat ratio, and 6-88 rump fat ratio. She produced a full brother to Entice selling for \$11,000, and her five sons have averaged a 792 pound weaning weight
- Entice had a very solid set of performance data: BW 77 lbs., WW 886 lbs., WR 116 among 216 contemporaries, YW 1544 lbs., YR 114, IMF 4.94, ratio 118, ribeye 17.0”, ratio 114.
- Entice was an excellent pen breeder and a high libido bull during natural service.
- Owned with Mogck & Sons, Olivet, SD and Select Sires, Plain City, OH.

HOOVER ATTRACTION



Calved
2-13-19

V131

19496759

[AMF, CAF, D2F,
DDF, M1F, NHF,
OHF, OSF, RDF]

CED	BW	WW	YW	SC	DOC	HP	CEM	MILK	MB	RE	CLAW	ANGLE
+10	-.4	+74	+136	+1.94	+33	+14.9	+3	+34	+.43	+.82	+.41	+.53
25%	20%	20%	15%	3%	2%	20%		10%		20%	20%	

- The \$15,000 Hoover Attraction has shared duties between the Mickey and Hoover herds. He is a big scrotal bull that has been used clean-up on heifers successfully. Heifers carry his service in our February 6, 2024 sale.
- Despite his calving ease ability, Attraction calves still keep up with the growth of their AI-sired herd mates. Attraction has good body

\$M
+68 30%
\$F
+102 20%
\$B
+146
\$C
+257

SydGen Enhance
MOGCK ENTICE
MOGCK Erica 2255 #

SydGen Sizzle
QUEEN OF ELLSTON S22
Queen of Ellston K11 #

SydGen Exceed 3223 #
SydGen Rita 2618
Mogck Sure Shot 253
MOGCK Erica 2162
Connealy Cool 39L #
WK Hazel 9201
Hoover Dam #
Queen of Ellston C355 #

and capacity, is wide based and is super slick haired to work well on fescue. One of his best traits is his excellent disposition, which readily passes along to his progeny.

- Dam S22 was a first calf heifer with Attraction, and is backed by three consecutive generations of Pathfinder cows! Typical of the Sizzle's, S22 is slick haired and nice uddered.
- S22 was the 10th top weaning weight heifer of her crop!
- Grandam K11 has earned Pathfinder honors for her excellent progeny performance and good fertility. She has put three replacement daughters in the herd. K11 is a great cow to work with at calving time. We count on her to bring in one of the best calves every year.
- Owned with Tanner and Drew Mickey, Taylorville, IL.

HOOVER ELITE



Calved
1-3-20

X8

19822162

[AMF, CAF, D2F,
DDF, M1F, NHF,
OHF, OSF, R0F]

CED	BW	WW	YW	SC	DOC	HP	CEM	MILK	MB	RE	CLAW	ANGLE
+0	+4.4	+89	+168	+1.08	+33	+13.2	+1	+29	+61	+84	+29	+42
		3%	1%		2%					20%	1%	20%

\$M
+63
\$F
+136 1%
\$B
+195 4%
\$C
+316 4%

SydGen Enhance
MOGCK ENTICE
MOGCK Erica 2255 #

Bruns Top Cut 373 #
ERICA OF ELLSTON R217 #
Erica of Ellston N54 #

SydGen Exceed 3223 #
SydGen Rita 2618
Mogck Sure Shot 253
MOGCK Erica 2162
Bruns Upper Cut 610
Dakota Miss 669 Baf #
Basin Excitement #
Erica of Ellston G366 #

SEMEN \$30 CERTIFICATES \$20

- Elite is a massive, structurally sound, easy-going bull! He offers a larger frame, exceptional length of body, width of base, and large scrotal. Now as a 4 year-old bull, Elite still has excellent foot shape!
- Owner Blake Crawford reports, "When Elite progeny are lined up at the bunk next to their AI-sired contemporaries, they are 6-8 inches longer bodied! Elite is perfect in his front feet, and we see this transmitting to his progeny. Elite sires long bodied, growthy, gentle disposition, problem-free cattle."
- Elite was Landi's favorite bull of the 2021 Hoover sale, and has been used back in the Hoover herd. Progeny sell in our February 6, 2024 sale. Backed by three consecutive generations of Pathfinder cows that have all served as working donors for Hoover Angus, a stronger cow family cannot be found!
- Elite was born at 83 pounds, WW 768 lbs., WR 109, YW 1485 lbs., YR 117.
- Dam R217 is one of our favorites! This working donor had a 353 day calving interval before we pulled her out of production for a season to flush. Her excellent progeny record: 5-95 BWR, 5-103 WR, and 5-104 YR.



Prim Lassie of Ellston A476
Elite Daughter
Sells February 6, 2024



Erica of Ellston R217
Dam of Elite
Pathfinder Hoover Donor

- Pathfinder donor grandam N54 is Landi's favorite daughter of G366. N54 records 8-95 BWR, 8-102 WR, and 6-104 YR! Fertility in this cow family is truly exceptional. N54 has good mothering skills (this clearly runs in this Erica cow family), and a beautiful udder.



Erica of Ellston N54
Grandam of Elite
Pathfinder Hoover Donor

- Pathfinder donor great grandam G366 is undoubtedly the most influential cow in recent Hoover history. She earned her place in the history books not by flashy genomics and unrealistic EPDs, but by progeny that performed and excelled in the real world, in a multitude of different environments for many cattlemen in different states. She is the epitome of what a model Angus female should be. G366's udder at over 12 years of age would rival most 3-4 year-old females in the breed today.
- Two direct daughters of G366 rank in the top 15 indexing cows of the herd, and 5 other descendants make this prestigious herd list! No cow family has ever had this much presence on this distinguished list before! Four direct daughters of G366 have earned the Pathfinder designation, as well as more descendants! At least 15 of her daughter descendants have served as donors.
- Too numerous to mention are G366's progeny that have found themselves in the very top of the crop for weaning weight. It is neat, however, that she had three-in-a-row #1 adjusted weaning weight calves of their respective crops.
- If you are looking for a bull with a little more frame, power, and growth backed by a tremendous cow family, put Elite on your list! He comes highly recommended!
- Owned with Crawford Angus, Adair, IA and High Point Genetics, Osceola, IA.

HOOVER VICTORIOUS



Calved
1-13-19

V25

19496271

[AMF, CAF, D2F,
DDF, M1F, NHF,
OHF, OSF, R0F]

CED	BW	WW	YW	SC	DOC	HP	CEM	MILK	MB	RE	CLAW	ANGLE
+8	+1.4	+85	+146	+84	+32	+15.7	+5	+33	+1.11	+59	+44	+37
		5%	10%		3%	15%		15%	10%		30%	10%

- Victorious was the lead-off, \$45,000 top-selling bull in our 2020 sale. He is a long bodied, thick, good quartered, wide based bull with more frame and a big scrotal. He is a massive bull that is big topped.
- Victorious has a +.10 Hair Shed EPD, in the best 2% of the breed!

\$M
+79 10%
\$F
+111 10%
\$B
+186 10%
\$C
+320 3%

SydGen Enhance
MOGCK ENTICE
MOGCK Erica 2255 #

Basin Excitement #
PRINCESS OF ELLSTON N170
Princess of Ellston L196

SydGen Exceed 3223 #
SydGen Rita 2618
Mogck Sure Shot 253
MOGCK Erica 2162
Basin Expedition R156
Basin Lady S532 AK
Connealy Reward #
Princess of Ellston J42 #

SEMEN \$35 CERTIFICATES \$45

- In our spring 2022 crop, Victorious sired the 2nd and 3rd top weaning weight bull calves of the entire crop – quite an accomplishment for a relatively small sire group! Several bred heifer daughters of Victorious sell in our February 6, 2024 sale.
- Victorious was the 5th top weaning weight bull of his crop, and better yet, he started out at a light 70 pounds! Indicative of his multi-trait excellence, Victorious fares well for \$M, \$B, and \$C.
- Dam N170 is a light birth weight cow whose calves get right up and grow quickly. She records 8-92 BWR, 8-101 WR, and 6-103 YR.
- Pathfinder great grandam J42 is an excellent cow with a picture-perfect udder and 8-107 WR. Three sons averaged \$7425. She has a 360 day calving interval.
- Owned with Grimmus Cattle Co., Oakdale, CA.

BALDRIDGE 38 SPECIAL



Calved
1-13-15

C040

18229487

[AMF, CAF, D2F,
DDF, M1F, NHF,
OHF, OSF, RDF]

CED	BW	WW	YW	SC	DOC	HP	CEM	MILK	MB	RE	CLAW	ANGLE
+9	+0	+72	+124	+1.16	+16	+11.8	+13	+29	+1.04	+38	+31	+39
30%	25%	25%	30%	30%			10%		15%		2%	10%

\$M
+83 10%
\$F
+79
\$B
+145
\$C
+271 25%

EF Complement 8088 #
EF COMMANDO 1366 #
Riverbend Young Lucy W1470

Styles Upgrade J59 #
BALDRIDGE ISABEL Y69
Baldrige Isabel T935

Basin Franchise P142 #
EF Everelda Entense 6117
B/R Ambush 28 #
Riverbend Young Lucy T1080
Sitz Upward 307R #
Plainview Lassie 71B
Baldrige Kaboom K243 KCF #
Baldrige Isabel P4527

SEMEN \$25 CERTIFICATES \$35

- 38 Special sons have been crowd favorites in the past six Hoover Angus sales. One hundred sixteen 38 Special sons to come to auction at Hoover Angus have averaged \$8116! 38 Special progeny have added frame, length, and muscle. Well-documented calving ease, growth, and marbling are trademarks of this sire. Many heifers have calved successfully to 38 Special, and we do recommend him as a safe choice for use on heifers.
- Females have been equally successful in sales as well as real-world conditions. 38 Special daughters are now in the prime of their life, and we can definitely say 38 Special can improve udders – daughters have superior udder attachment and small teat size.
- Among the top 10 indexing cows in the Hoover herd, 3 are sired by 38 Special, including the #1 cow! Over 500 daughters have an average 101 wean ratio on their progeny.



Erica of Ellston S7
38 Special Daughter
Pathfinder Hoover Angus Donor



Erica of Ellston X39
\$20,000 38 Special Daughter



Erica of Ellston T220
\$20,000 38 Special Daughter



Hoover 38 Special S4
\$39,000 38 Special Son

- 38 Special now has over 900 progeny with a whopping 110 IMF ratio and 100 ribeye ratio!
- In 38 Special's first calf crop, a heifer calf was the #1 adjusted weaning weight heifer of the crop at 872 pounds, which is the heaviest adjusted weaning weight of any female in Hoover history!
- 38 Special was our pick of the bulls in the 2016 Baldrige Sale, where he and his 6 flush brothers averaged \$58,928. 38 Special was the 3rd top-selling bull of the event at \$100,000.
- 38 Special was definitely the power, high performance bull of his flush and a standout with added frame in the Baldrige offering. Viewing the Y69 donor cow prior to purchasing 38 Special, we found her to be everything Jud promised. As her sons are being used heavily now across the breed, Y69 will be remembered as one of the breed's great ones! She is one of the top income-producing cows in the history of the breed.
- Owned with Alta Genetics, Rocky View County, AB and Baldrige Performance Angus, North Platte, NE.

HOOVER SPECIAL EDITION S454



Calved
8-23-17

S454

19125070

[AMF, CAF, D2F,
DDF, M1F, NHF,
OHF, OSF, RDF]

CED	BW	WW	YW	SC	DOC	HP	CEM	MILK	MB	RE	CLAW	ANGLE
+5	+1.6	+81	+135	+89	+22	+11.3	+5	+30	+77	+48	+43	+47
		10%	15%		30%			25%	30%		25%	

- Special Edition was the 4th top weaning weight bull of his crop at 925 pounds! He is a smooth, good looking bull with a tight sheath and excellent feet. His feet have held up extremely well, even as a 6 year-old bull!
- Special Edition has an amazing amount of style and eye appeal for a bull that displays optimal calving ease and pushes the upper limits for growth. He is a rare find! He also has an outcross pedigree for the vast majority of today's Angus genetics.

\$M
+84 10%
\$F
+90
\$B
+144
\$C
+271 25%

EF Commando 1366 #
BALDRIDGE 38 SPECIAL #
Baldrige Isabel Y69

Connealy Direct Deposit #
EDILLA OF ELLSTON N473 #
Edella of Ellston K264

EF Complement 8088 #
Riverbend Young Lucy W1470
Styles Upgrade J59 #
Baldrige Isabel T935
Connealy Danny 5398
Boka Rae of Conanga 168
Basin Excitement #
Edella of Ellston H232 #

SEMEN \$25 CERTIFICATES \$40

- We are impressed by the Special Edition calves having outstanding growth and eye appeal. Even with a relatively small sampling of calves his first year, a Special Edition daughter was the 4th top weaning weight heifer of our spring 2020 crop!
- Pathfinder dam N473 has an excellent record of productivity and fertility – she has a 362 day calving interval on her 7 calves with 7-100 BWR, 7-106 WR, and 6-104 YR. Her four sons have averaged an 856 pound weaning weight! A full brother to Special Edition was the #1 IMF scanning bull of his crop.
- N473 was a high performing female herself – she had a BW 67 lbs., WW 733 lbs., WR 106, YW 1010 lbs., YR 103, IMF 4.58, ratio 112, ribeye 11.7", ratio 98. She was the 8th top weaning weight heifer of her crop!
- Special Edition is backed by six consecutive generations of high rationing, highly productive females with superior udder quality.

BALDRIDGE CHAIRMAN



Calved
1-17-16

D073

18587751

[AMF, CAF, D2F,
DDF, M1F, NHF,
OHF, OSF, RDF]



Hoover Chairman Z463
\$12,000 Chairman Son



Gammer of Ellston V225
\$7250 Chairman Daughter

CED	BW	WW	YW	SC	DOC	HP	CEM	MILK	MB	RE	CLAW	ANGLE
+9	-1.6	+68	+120	+72	+18	+13.5	+15	+29	+68	+81	+53	+50
30%	10%					30%	3%			20%		

\$M
+65
\$F
+88
\$B
+143
\$C
+250

Connealy Confidence 0100 #
FORTUNES CONQUEST 224
Fortunes 4412 Ethelda

G A R Prophet #
BALDRIDGE ISABEL B061
Baldrige Isabel Y69

Connealy Tobin
Becka Gala of Conanga 8281
S A V 004 Traveler 4412
Fortunes 112 Ethelda 423
C R A Bextor 872 5205 608 #
G A R Objective 1885
Styles Upgrade J59 #
Baldrige Isabel T935

SEMEN \$20 CERTIFICATES \$35

- Chairman checks a lot of boxes and is one of the most balanced, complete bulls in the Hoover line-up. We love our Chairman daughters, as they are deep, broody, model Angus females with very nice udders! Chairman progeny are low birth weight cattle with growth, style, and a sound structure to make them very well-rounded cattle. Five Chairman sons averaged \$8300 in our 2021 auction, and 18 sons averaged \$7903 in our 2022 sale!
- The oldest Chairman daughters are now in the prime of their

life, and they are my favorite sire group of our 3-5 year-old cows! Chairman daughters have an average 102 wean ratio on their progeny! One of our most up-and-coming donors is a Chairman daughter – her outstanding flush of General Lee progeny will highlight our February 6, 2024 sale.

- Chairman was the #1 yearling weight bull of the 2017 Baldrige sale at 1442 pounds, YR 115 after posting an 842 pound weaning weight, WR 113! This \$55,000 bull is a deep bodied, massive type bull. Chairman was definitely a favorite of Jud's in their sale, as he earned a painted picture in the Taft Building. He is a loose-skinned, stylish bull whose progeny are generally a tick more moderate frame than most Hoover cattle.
- Chairman was the first natural calf of the outstanding B061 cow. We viewed B061 before purchasing Chairman, and found her to be an exceptional uddered young cow. The B061 cow has now become a high-impact donor for several programs. She is a full sister to Baldrige Beast Mode at Genex. Some of her promising sons include Baldrige Pappy and Baldrige Done Deal (both by No Doubt), Baldrige Movin On G780, and Baldrige Gibson G859. She is the highest grossing daughter of the great Y69 cow. Y69 has become one of the most influential cows of the entire Angus breed.
- Owned with Alta Genetics, Rocky View County, AB and Baldrige Performance Angus, North Platte, NE

RAML ATHLETE



Calved
12-29-19

0513

19926411

[AMF, CAF, D2F,
DDF, M1F, NHF,
OHF, OSF, RDF]



Blueblood Lady Ellston A68
Athlete Daughter
Sells February 6, 2024



Hoover Athlete A477
Athlete Son
Sells February 6, 2024

CED	BW	WW	YW	SC	DOC	HP	CEM	MILK	MB	RE	CLAW	ANGLE
+7	+7	+77	+135	+8	+27	+16.6	+11	+28	+23	+86	+44	+63
		15%	15%		15%	10%	25%			20%	30%	

\$M
+51
\$F
+98
30%
\$B
+131
\$C
+221

S A V Renown 3439 #
RAML RUGBY 7103
RAML Ruby 103

TC Aberdeen 759 #
RAML ROYCE 536
RAML Royce 335

Rito 707 of Ideal 3407 7075
S A V Blackcap May 4136
S A V Providence 6922 #
Chestnut Ruby Burgess 644
C R A Bextor 872 5205 608 #
TC Blackbird 4034 #
Connealy Thunder #
RAML Royce 102

- Raml Athlete was THE BEST footed bull we traveled to see in the spring of 2021! His toe shape is ideal and his heel depth exceptional. We purchased him to continue our quest to improve foot quality, structure, longevity and disposition excellence! Grant

Raml was not joking when he said this bull is laid back – he definitely matches his Docility EPD near the top of the breed!

- We weaned our first set of Athlete calves in 2022, and his calves came in with an excellent average wean ratio of 103!
- Athlete weaned at 881 pounds, WR 121, YW 1415 lbs., YR 112, and had an adjusted 39.36 cm scrotal. His dam posts a whopping 3-118 WR and 3-110 YR with well below average birth weight ratios on her natural progeny! She has become a donor for the Raml family. Two of the superior cows in his pedigree are found in the pedigree of the other bull we purchased at Raml's the same year – Raml Optics.
- Athlete is a soft sided, soggy-made, wide topped bull. He has a small head to aid in calving ease, yet has gas in the tank to sire high performing calves! His calves exhibit excellent depth of body and rib shape.
- Athlete is at Hoover Angus servicing cows and was used clean-up in our largest pasture in 2022. We welcome you to Hoover Angus to view Athlete and any other herd sires we have on the farm. Our doors are always open for our customers to evaluate the cattle in person before making purchasing decisions of genetics.
- Owned with Raml Cattle, Goodwin, SD.

HOOVER NO DOUBT



Calved
1-29-14

N68

17882682

[AMF, CAF, D2F,
DDF, M1F, NHF,
OHF, OSF, RDF]

CED	BW	WW	YW	SC	DOC	HP	CEM	MILK	MB	RE	CLAW	ANGLE
-2	+4.7	+75	+140	+1.82	+30	+7.8	+11	+14	+9.5	+9	+44	+37
		20%	15%	5%	5%		25%		15%	15%	30%	10%

\$M
+58
\$F
+132 1%
\$B
+203 2%
\$C
+321 3%

MOGCK Sure Shot #
MOGCK BULLSEYE #
Mogck Mary 1255

SydGen C C & 7 #
MISS BLACKCAP ELLSTON J2
Miss Blackcap Ellston D154 #

Mytty In Focus #
Mogck Black Lass 2065
K C F Bennett Coalition SCC #
Mogck Mary C 1757
S A F Connection #
SydGen Forever Lady 4087
TC Gridiron 258 #
Miss Blackcap Ellston A269

SEMEN \$50 CERTIFICATES \$35

- ★ Hoover No Doubt was the \$67,500 top-selling bull in our history! No Doubt is now deceased and limited semen is available through Alta. Several nice sons sell in our February 6, 2024 sale.
- ★ No Doubt's progeny have met the market's demands for width of base, superior feet, and sound skeletons with real-life true performance that is not just genomic-based. No Doubt consistently transmits style and eye appeal with an uncommon amount of meat.
- ★ Sale reports from highly respected breeders from across the country have been filed with No Doubt sons and daughters in high demand. No Doubt daughters topped our 2022 sale at \$26,000 and our 2021 mini online female sale at \$36,500 – repeat buyers of Hoover Angus were the winning bidder and contending bidder on this pick! Most recently, a No Doubt son sired three of the four top-selling bulls at the prestigious Midland Bull Test in 2023!
- ★ No Doubt progeny are unquestionably breed leaders for excellent temperament.



Erica of Ellston Z40
\$30,000 No Doubt Daughter



Erica of Ellston Z37
\$36,500 No Doubt Daughter



Erica of Ellston X85
\$26,000 No Doubt Daughter



Hoover No Doubt B26
No Doubt Son
Sells February 6, 2024

- ★ Daughters in production offer a notch more frame and very nice udder quality. Their calm demeanor makes them good to work with at calving time.
- ★ Three of No Doubt's sisters have earned Pathfinder status!
- ★ No Doubt was a hunk that turned in an adjusted 1540 pound yearling weight, ratio 113 to be the #1 adjusted yearling weight bull in our sale! He also scanned a 108 IMF ratio, and tied as the top scanning ribeye bull (among 81 yearlings) with a 17.3" ribeye, ratio 114!
- ★ Donor dam J2 is a 10th generation Hoover Angus bred, born, and raised Blackcap Ellston female. She was the lead-off, \$20,000 top-selling open heifer from our 2011 auction. J2 hit her financial stride eight years of age, generating nearly a quarter million dollars of revenue in a 12 month period! In 2021, at 11 years of age, J2 produced the \$158,000 top-selling bull of all breeds at the 2021 Midland Bull Test!
- ★ When we sold J2, we retained one flush from this female, and had five live calves born in 2014. Only one was a bull, No Doubt. The 4 sisters had an average 774 pound weaning weight.
- ★ Owned with Alta Genetics, Rocky View County, AB and Spruce Mountain Ranch, Larkspur, CO.

HIGH POINT INVESTOR



Calved
9-30-19

9207

19824542

[AMF, CAF, D2F,
DDF, M1F, NHF,
OHF, OSF, RDF]

CED	BW	WW	YW	SC	DOC	HP	CEM	MILK	MB	RE	CLAW	ANGLE
+7	+1.7	+78	+139	+69	+23	+12.1	+11	+28	+39	+51	+56	+52
		15%	15%		30%		25%					

- ★ Investor had an ideal 78 pound birth weight, WW 745 lbs., WR 106, YW 1388 lbs., YR 102. Investor is a stout made, well-rounded bull.
- ★ Investor's first calf crop was small, but none-the-less impressive! In Investor's second crop, a son was the 3rd top weaning weight bull and a daughter was the 4th top weaning weight heifer!
- ★ Investor's greatest attribute is his dam and cow family. His dam is a pretty, feminine female that is just the right size. She records

\$M
+59
\$F
+99 25%
\$B
+136
\$C
+235

Basin Payweight 1682 #
DEER VALLEY GROWTH FUND
Deer Valley Rita 36113

V A R Generation 2100 #
HIGH POINT MIMI 777
S A F Mimi 044-M94

Basin Payweight 006S #
21AR O Lass 7017
Plattmeyer Weigh Up K360 #
Deer Valley Rita 9457
Connealy Consensus 7229 #
Sandpoint Blackbird 8809
Sitz Upward 307R #
XCR Mimi M94

3-107 WR with an excellent 359 day calving interval. She has a square and tidy udder with a small teat size. Her feet are nearly ideal! High Point's Brian Oswald has high praise for the three generations of cows stacked behind Investor for their calm demeanor and mothering ability.



Maid of Ellston A123
Investor Daughter
Sells February 6, 2024

- ★ Investor's grandam records 7-100 WR and 5-106 YR. His great grandam was one of the best cows ever in production at High Point, raising 14 calves with an average 107 WR.
- ★ Owned with High Point Genetics, Osceola, IA.

SYDGEN BIG JOHN



Calved
12-27-22

3008

20710667

[DDF]

\$M
+63
\$F
+84 2%
\$B
+215 2%
\$C
+341 1%

Baldrige Colonel C251 #
SYDGEN KCF GAVEL 8361
K C F Miss Fortress B398

SydGen Expansion 5917
SYDGEN PRIMROSE 9193
SydGen Primrose 3619

baldrige Xpand x743
Baldrige Isabel Y69
K C F Bennett Fortress #
K C F Miss Southside Z541
SydGen Express 3487B
SydGen Envious Blackbird 102
SydGen 928 Destination 5420 #
SydGen Primrose 0681

CED	BW	WW	YW	SC	DOC	HP	CEM	MILK	MB	RE	CLAW	ANGLE
+13	+1	+88	+161	+1.66	+16	+18.8	+15	+38	+1.12	+1.09	+35	+51
10%	25%	3%	2%	10%		2%	2%	3%	15%	4%	10%	

★ "Big John" was named in honor of the 2nd generation of Hoover Angus, Big John Kiburz. This bull epitomizes John's favorite type of bull – he's a bigger framed, high performance bull with loads of length. At the time of the November 18, 2023 SydGen sale, he was the highest performing bull calf by over 100 pounds, with a projected YW of 1557 pounds! He is a slick haired bull that can

excel on hot fescue.

- ★ Starting at a moderate 70 pound birth weight, Big John was the #1 weaning weight calf of his crop at an impressive 832 pounds, ratio 127! We of course viewed Big John's dam before purchasing the bull, and found her to be a nice uddered, moderate-sized female with ample body. Big John was her third calf, and her third photo feature son or daughter to come to auction. She maintains an impeccable production record of a 361 day calving interval and 3-97 BWR, 3-114 WR, and 1-113 YR. It appears she has met the requirements to be awarded the elite Pathfinder honor this spring.
- ★ We are proud to partner with a herd like SydGen that collects a multitude of phenotypic traits like we do. Both SydGen and Hoover Angus are industry leaders in reporting traits like docility, foot quality and hair shedding ability.
- ★ Owend with Sydenstricker Genetics, Mexico, MO.

JAR INCREDIBLE 6104 808



Calved
1-26-18

808

19273962

[AMF, CAF, D2F,
DDF, M1F, NHF,
OHF, OSF, RDF]

\$M
+48
\$F
+91
\$B
+142
\$C
+232

Musgrave Invasion
PANTHER CR INCREDIBLE 6704 #
Panther Cr JH Blackbird 409

TC Total 410 #
JAR ERICA 6104
JAR Ava Lee 048 3202

MCATL Pure Product 903-55 #
MCATL Evergreen 619-K27T
Apex Windy 078 #
Panther Cr JH Blackbird 221
Bon View New Design 208 #
TC Erica Eileen 2047
J A R Mega Bucks 9155
J A R Erica 1159

CED	BW	WW	YW	SC	DOC	HP	CEM	MILK	MB	RE	CLAW	ANGLE
+6	-.8	+67	+116	+.75	+20	+8.3	+11	+32	+69	+51	+61	+61
	15%						25%	20%				

★ This 7 frame bull is one of the most attractive bigger bulls we have found in recent times. His first summer breeding cows as a yearling bull, he held his flesh well. We now run Incredible in our toughest fescue pasture, and he handles it well and still looks great at the end of the breeding season.

- ★ Incredible is a calving ease bull whose progeny are certainly light at birth, but get right up and grow quickly. The Incredible cattle have a little more "look" to them, and several nice progeny sell in our February 6, 2024 sale.
- ★ Young Incredible daughters have beautifully tight udders with excellent teat size and shape.
- ★ Incredible's performance data: BW 80 lbs., WW 854 lbs., WR 117, YW 1500 lbs., YR 114, scrotal 37.9 cm.
- ★ One of the things we like most about this bull is his functional, highly productive dam that weaned her last calf at 15 years of age! She records 13-104 WR, 12-106 YR and was still excellent footed into old age. Five sons averaged \$9300!
- ★ Owned with Jallo Angus Ranch, Fordville, ND.

Realistic & Reliable EPDs Start with Phenotypic Data

As our breed churns generations faster, we are reminded how important actual phenotypes are. At Hoover Angus, we believe genomics exhibit their full potential only when paired with the accurate collection and submission of phenotypic data – the foundation for realistic and reliable EPDs.

Blackbird Bonnie EllstonV401 Reg: AAA19703288 Cow

Birth Date: 08/05/2019 Tattoo: V401
Parentage: SNP Genomic: Angus GS Genomic Prog: 1
Breeder: 354551 - Landi K McFarland, Ellston IA
Owner(s): 354551 - Landi K McFarland, Ellston IA

Management				HAIR
Doc	Claw	Angle	Prog	Acc
Acc	Acc	Acc		Acc
%	%	%		%
+18	+38	+46		+39
.46	.37	.37		.22
.40%	.20%	.20%		.48%
1	1	1		

Click here to view this Angus on Dairy Values Section

Currents				Angus on Dairy Values			
CW	Marb	RE	Fat	Carc	Used	Shed	SH
Acc	Acc	Acc	Acc	Prog	Prog	%	%
%	%	%	%			%	%
+32	+.79	+.43	+.049			+.76	+.67
.41	.38	.38	.33			.42%	.1%
.10%	.10%	.10%	.10%				.2%

Phenotypic traits: CE, BW, WW, YW, YH, HP, MW, Doc, Claw, Angle, HS, UScanWT, UIMF, URE, URibFat, URumpFat

Hoover Angus has been submitting heifer breeding records to AHIR for 18 years, and temperament scores have been submitted since the AAA began accepting this data. Hoover Angus is a leading herd in foot score collection, with over 2300 foot score submissions. We have contributed over 2000 hair shed scores to the database.

Our February 6, 2024 genetics offering will feature 180 lots of bulls, spring and fall bred heifers, and open heifers from our performance tested, Maternal Plus® herd. Visit www.hooverangus.com or call Landi at 641-344-7684 to request a copy of our catalog.

Landi

DEEP CREEK LEGITIMATE 203



Calved 1-5-22 203

20509691

[AMF, CAF, D2F, DDF, M1F, NHF, OHF, OSF, RDF]

CED	BW	WW	YW	SC	DOC	HP	CEM	MILK	MB	RE	CLAW	ANGLE
+6	+1.1	+92	+150	+4.5	+16	+13.9	+7	+30	+9.5	+8.8	+4.1	+4.4
		2%	5%			30%		25%	20%	20%	20%	30%

\$M
+65
\$F
+107 15%
\$B
+178 15%
\$C
+296 10%

Woodhill Blueprint
MYERS FAIR-N-SQUARE M39
Myers Miss Beauty M136

Basin Rainmaker 4404
DEEP CREEK RAIN LASS 013
Deep Creek MP Lass 933 #

Connealy Confidence Plus #
Woodhill Evergreen Z291-B233
Connealy Thunder #
Myers Miss Beauty M476 #
Basin Rainmaker 2704
Basin Joy 1036
Ma & Pa Feature Presentation
Deep Creek 193 Lass 516 #

SEMEN: Call for availability

- ★ Legitimate. That's his name, that's what he is, and that's the program he comes from!
- ★ I do my homework before going to look at herd sire prospects. Everything TJ told me about the bull I found to be accurate when I laid my eyes on the bull and his mother. Legitimate's Pathfinder

grandam and Pathfinder great grandam each have 10 calves on record, signaling strong longevity, fertility, and productivity - traits hard to measure by EPDs, but foundational to our commercial cattlemen customers!

- ★ TJ Gabriel of Deep Creek Angus Ranch states, "From the time he hit the ground,



Deep Creek Rain Lass 013
Dam of Legitimate

- we knew he had the potential to be great. Extreme length, depth of flank, extra chest floor, and he stands on a great foot. He rose to the top and earned 'Lot 1' status in the 2023 Deep Creek sale, where he garnered \$105,000 with progressive cattlemen winning the bid as well as being the contending bidders."
- ★ In a contemporary group of over 100 bulls, Legitimate weaned at 931 pounds and went on to post a 1493 pound yearling weight, ratio 123. He had a nice ultrasound scan of a 4.36 IMF, ratio 118, ribeye 14.4", ratio 116. His scrotal was an optimum 38 cm.
- ★ Legitimate's grandam is the dam of the \$20,000 Doc Holiday and his great grandam is the mother of a top Deep Creek donor who records a phenomenal 10-117 WR! Legitimate's dam is a beautiful three year-old that is easy keeping, broody, nice uddered, and has a bright future ahead of her!
- ★ Legitimate was a large part of the spring and fall 2023 breeding program at Hoover Angus! Select bred heifers will carry his service in our February 6, 2024 sale. You'll hear more from this outcross pedigree, standout bull in the future, as we are excited to add this bull to our herd sire line-up!
- ★ Legitimate froze semen on his first collection at Western Sires. He had heavy use rotating between the Moon Creek and Hoover Angus spring breeding programs, followed by Moon Creek's summer breeding program.
- ★ Stay tuned later for updates when semen sales become a possibility.
- ★ Owned with Moon Creek, George, IA; Hansine Ranch Partnership, Pierre, SD; and Deep Creek Angus Ranch, Midland, SD.

96 Years of Quality Angus Cattle

F.W. (Walt) and Sadye Hoover founded their registered Angus herd in 1928. Walt Hoover was known as the "Dean of Iowa Angus" and was a legend in Iowa Angus circles. Hoover Angus is located near Ellston and Tingley, Iowa. Females bear "Ellston" in their pedigree name to signify the herd location and homestead of Hoover ancestors in 1856.

Walt often told the story of paying \$300 for Revolution's Bell Boy as a 3 month-old calf. Quite a price in the tough days of 1937, but he carried a sterling pedigree. He was used in the herd until his death at past 14 years. Sons and daughters of Revolution's Bell Boy were widely distributed to all corners of the country. In fact, herd sire E L K Trophyclas traces back to Bell Boy!

Second generation John and Barb (Hoover) Kiburz joined with Walt & Sadye in 1953. It was with the same enthusiasm and drive that John took over the entire herd upon Walt's death.

John & Barb's daughter Joy, and her husband David McFarland, then returned back to the farm in 1980. February 1991 was the inaugural Hoover Angus sale. The first Tuesday in February is still the date of the annual sale. The sale is truly a family affair that the family manages.

The 1990-2000 decades showed movement up the ladder for Hoover Angus as the Hoover family purchased their first bull to join a bull stud, SA Neutron 377. Following on his heels were TC Gridiron 258, then SydGen CC&7. From CC&7 came Hoover Dam, the first Hoover-prefix bull to be in a bull stud. Hoover Dam grossed over \$5 million in semen and certificates

sales to be one of the top income-producing sires in Angus history. Hoover Angus has owned or bred 34 bulls that have seen tenure in 8 different bull studs. Semen from these bulls is marketed on 5 continents.

Fourth generation Landi (McFarland) Livingston started writing footnotes for the annual production sale in high school, and by college, she was writing the entire catalog, a 60+ page book. Landi and her husband Andrew join David, Joy, and John in the day-to-day activities of Hoover Angus. This family team has a combined 217 years of registered Angus experience! The family has no "off farm" jobs - the cattle must pay the bills!

The cow herd became a closed cow herd twenty years ago, and the vast majority of current cow families trace back 10+ generations of Hoover blood - up to 19 generations. The present herd is 300 spring calving cows and 100 fall calving cows. The annual production sale offers 100 bulls and 80 females with price ranges to fit any budget. Hoover Angus strives to produce sound, functional cattle with EPD excellence that is not just genomic based. The cattle thrive on fescue and are adaptable to a multitude of different environments.

Hoover Angus is a Maternal Plus® herd and a leader in accurate collection and submission of a multitude of different phenotypes from foot scores to hair shed scores as well as genomics. An extensive website at www.hooverangus.com details 30 herd sires, past and present sales, and further history and philosophies of Hoover Angus. The annual Hoover Angus sale catalog offers a volume of information rarely found.

Angus herds come and go, but Hoover Angus has built a reputation you can rely on for honesty, integrity, and cattle with multi-trait superiority.

Same Family...

Same Farm...

Same Mission...

Superior Quality